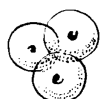
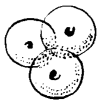
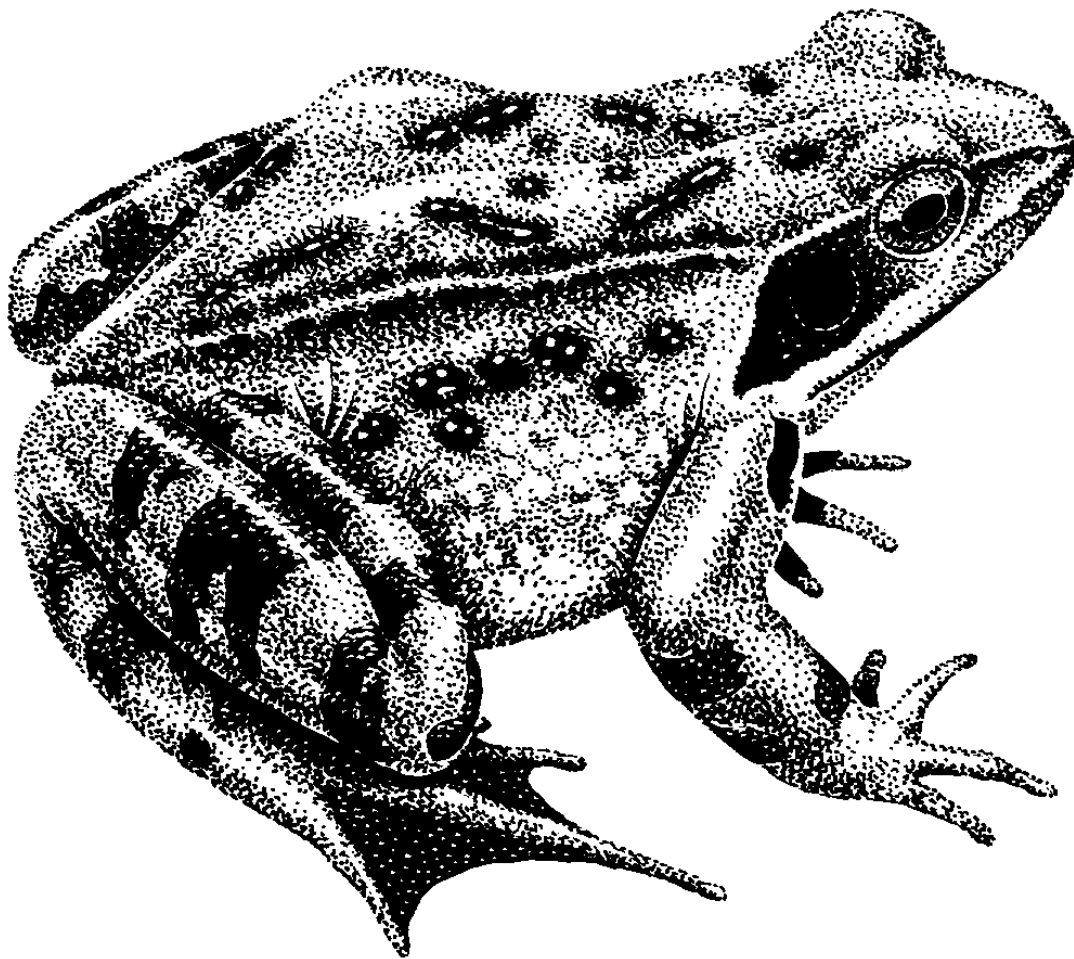


Spawn Spot



A survey of frogs and toads in
Leicestershire and Rutland

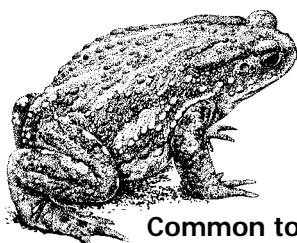
Spawn Spot

Numbers of amphibians - animals that live both on land and in water - are declining across the UK. This is caused by many factors, including pollution, damage to, or loss of, habitats, and disease. As amphibians are good indicators of the health of the environment, any changes in numbers can warn us of unfavourable changes to our countryside. Conservationists need more information on where common frogs and common toads are found in Leicestershire and Rutland, and how many there are. Your help is needed!

● How can you help?

Spawn spotting is a good way to count the number of frogs and toads. This will help conservationists assess population sizes. Each female lays one clump or string of spawn each spring. Therefore, 12 clumps of frogspawn means there are 12 female adult frogs.

- Count how many clumps of frogspawn, or strings of toadspawn, are laid in ponds in the spring.
- Look carefully at the strings of toadspawn as they are often intertwined and wrapped around plants.
- Fill in the Spawn Spot form and return it to the Community Heritage Initiative. For more copies of the survey form contact the Community Heritage Initiative at Holly Hayes Environment and Heritage Resources Centre, Leicestershire County Council, 216 Birstall Road, Birstall, Leicester, LE4 4DG, chi@leics.gov.uk or 0116 267 1377.



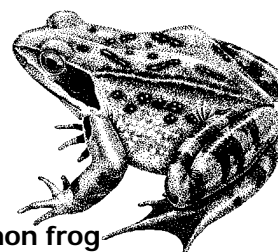
Common toad



Toad spawn



Frog spawn



Common frog

● Where do you find frogs and toads?

Common frogs usually breed in small ponds, ditches, or canals, and sometimes in slow moving streams. Garden ponds are often ideal.

Common toads prefer larger ponds, lakes and canals and rarely breed in garden ponds.

● What else can you record?

Information on other wildlife, such as newts or dragonflies, is also very helpful. Make notes of what you see on the survey form. You could also record more information about the pond using the Pondamonium survey form available from the Community Heritage Initiative at the above address.

● Newts

If you find an egg wrapped in a leaf of a pond plant, it may be a newt egg.

Newts are amphibians too, but lay each egg separately in a leaf instead of in clumps or strings. The leaf protects the egg from predators and sunlight.

Unwrapping newt eggs will harm them.



Remember, great crested newts and their eggs are protected by law and you should not harm them, nor disturb or catch them without an appropriate licence.

