



**MELTON AREA  
SAFER COMMUNITIES  
PARTNERSHIP**

**COMMUNITY SAFETY PLAN  
2008 - 2011**

***"WORKING TOGETHER  
TO TACKLE CRIME AND  
THE FEAR OF CRIME IN  
THE BOROUGH OF  
MELTON"***

## CONTENTS

Foreword	page 3
Introduction to Melton	page 4
About the Partnership	page 5
About the Plan	page 5
Setting the Partnership Priorities	Page 5-6
Progress and Performance	Page 6-7
Community Safety Priorities	Page 7-8
Priority 1: Alcohol Misuse	page 8-10
Priority 2: Tackling Domestic Abuse	page 10-11
Priority 3: Tackling Anti-Social Behaviour	page 12-13
Priority 4: Reducing Acquisitive Crime	page 14-15
Cross Cutting Priorities	page 15
Reducing Re-offending	page 15-16
Priority Neighbourhoods	page 17-18
Safety in the Borough	page 18-19
Delivering the Plan	page 20-21
Performance Management	page 21-22
Community Engagement	page 23
Equalities	page 24
Appendices	page 25-29

## FOREWORD

### **By Councillor David Wright Partnership Chair**

The Melton Area Safer Communities Partnership brings together a variety of statutory, non-statutory and voluntary organisations with a shared commitment to reduce crime, disorder and substance misuse in the Borough of Melton. We believe that by working together and involving our local communities we can make a real difference in improving the quality of life for those living and working in the Borough.

The mission statement of our partnership is: *"to reduce crime and the fear of crime in Melton Borough on a sustainable basis through partnership working"*.

The 2005-2008 community safety strategy provided the partnership with some challenging targets and, although not all were achieved, I am pleased to say we have worked collectively in successfully reducing crime in Melton by some 9%. Through our approach to neighbourhood management, focusing on those areas most in need, the delivery of diversionary initiatives and designing early intervention projects we have seen sustained reductions in vehicle crime, burglary and common assaults.

Acknowledging that more work needs to be done this new 3 year plan for 2008 to 2011 again sets the partnership some tough challenges with regard to reducing crime and disorder. The priorities and key objectives set out in this plan are based upon a comprehensive assessment of crime and disorder issues across the Borough and reflect the views of the community on matters that need to be prioritised.

I am confident that by working together on this plan, building on previous successes, we can make an even greater contribution to reducing crime and improving the quality of life in the community of Melton.



*D Wright*

## INTRODUCTION TO MELTON

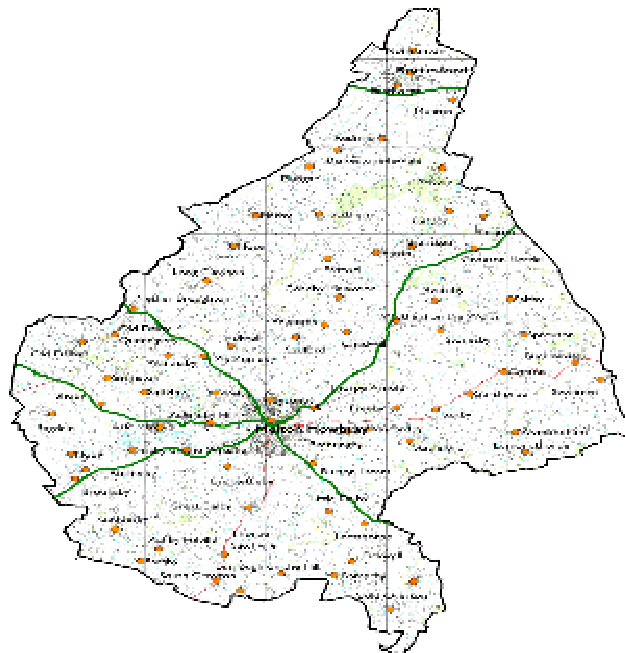
Melton Borough is an attractive rural area located in north-east Leicestershire and includes the market town of Melton Mowbray and more than 70 small villages. The town is about 28 kilometres from the surrounding cities of Leicester and Nottingham and the towns of Loughborough and Grantham.

The population for Melton Borough in 2006 was 48,800 and is the tenth smallest district in England with a population density of just 1 person per hectare. The majority (52%) live in Melton Mowbray and the remainder in the surrounding villages. Melton includes a small proportion of residents from a non-white ethnic background and has an ageing population.

The local economy has developed from an agricultural base to a growing manufacturing and service economy. In 2001 there were 2,000 businesses providing 17,300 jobs in the Borough. The bulk of which, 5,300 were located in manufacturing, 3,700 in distribution, hotels and restaurants and 3,800 in public administration.

Melton is also host to a variety of unique tourist attractions including a weekly cattle market and the annual East Midlands Food Fair, one of the biggest food fairs in the country.

The actual crime levels recorded in the audit (2001-2004) corresponds directly to the local perception of crime and strengthens the actuality that Melton is a safe place to live with low crime levels.



## **ABOUT THE PARTNERSHIP**

The Melton Area Safer Communities Partnership formed as a result of the Crime and Disorder Act 1998 which placed a statutory duty on the police, local authority, county council, primary care trust, police authority and fire authority to work together in order to develop and implement a community safety strategy designed to reduce crime and disorder within their local authority area. The partnership also engages with as many local agencies and voluntary groups as possible in order to achieve a truly community-based multi-agency approach to crime reduction. See *\*appendix 1\** for the partnership makeup and contributions.

## **ABOUT THE COMMUNITY SAFETY PLAN**

Every 3 years the partnership is required to produce a 3 year community safety plan which is informed by an audit of crime, disorder and drugs misuse and through consultation with the wider public. A recent review of the Police and Justice Act 2006 led to changes in the Crime and Disorder Act and the statutory requirements on the MASCP to tackle crime and disorder in Melton. The Melton Area Safer Community Partnership is now required to produce a 3 year 'rolling' community safety strategy which is reviewed annually through a strategic assessment. Each year the Partnership will prepare a Strategic Assessment to assist in revising the plan and the community safety priorities for Melton. The strategic assessment must include information on:

- ❖ Analysis of levels of crime
- ❖ Changes in crime since last strategic assessment
- ❖ Views from the community on matters that need to be prioritised

## **SETTING THE PARTNERSHIP PRIORITIES**

This Community Safety Plan outlines the main priorities for the Melton Area Safer Communities Partnership, with regard to crime, disorder and other aspects of safety for communities. For each priority the partnership has identified what we want to achieve and how we will work to achieve this. Communities themselves know the issues that affect them the most, and have a major part to play in making themselves as a community safer. Recognising this, the priorities in this plan are based upon community priorities in the Borough of Melton, and this is a plan for communities as well as for local organisations.

The priorities in this plan were identified in the Melton Area Safer Communities Partnership Strategic Assessment 2007-2008 which is based on community

consultation, crime audits and statistical information from all partner agencies. The following strategy and audit can be viewed on [www.melton.gov.uk](http://www.melton.gov.uk)

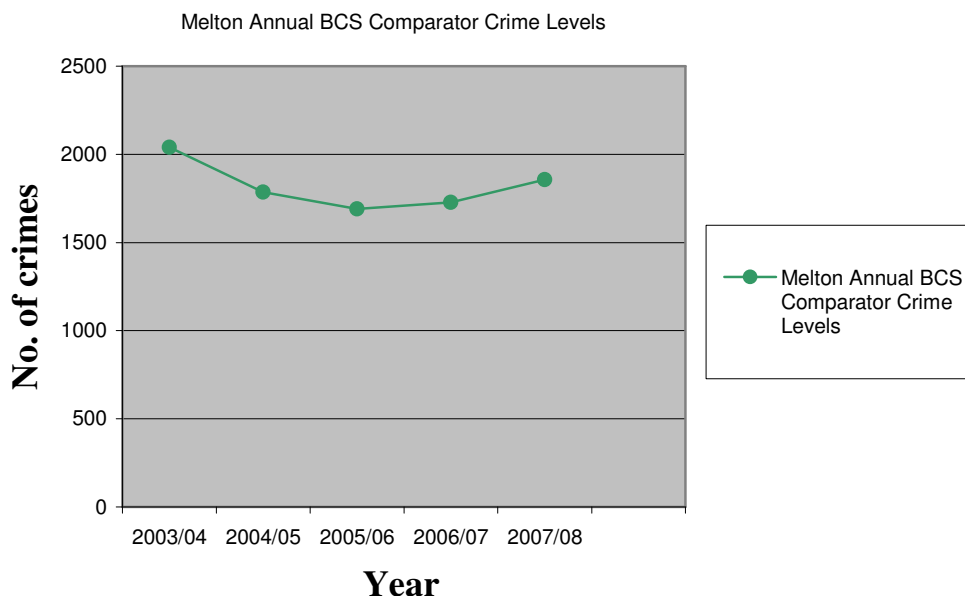
This plan has been developed in line with the Government's National Community Safety Plan and Cutting Crime Strategy and will be revised annually to take account of successful work, changing communities, and the changing nature of local priorities.

## PROGRESS AND PERFORMANCE OVER THE PAST 3 YEARS

The 2005-2008 community safety strategy incorporated some challenging targets including a requirement for the partnership to reduce crime in Melton by 15% by 2008. The partnerships targets were determined by local priorities identified through consultation with the wider public and national priorities identified by the Government such as National Public Service Agreements.

### *Crime Reduction*

Since 2003/04 the crime trend for Melton is a downward one. Crime levels for the 2007 year to date show that overall crime is down some 9% since 2003/04 with 200 less victims of crime. However crime levels during 2007 were the highest for 4 years and the partnership is committed in it's efforts to reduce crime further.



Crime significantly harms communities creating a culture of fear and damaging the lives of some of our most vulnerable groups in society including young people, ethnic minorities and the elderly, often leading to social exclusion. The factors that contribute towards social exclusion are also the factors that are associated in the development of crime and include: poor educational attainment, unemployment, low income, poor housing, poor access to services, family breakdown, drug and alcohol misuse. Only by understanding the joined up nature of these social problems can the partnership develop projects to effectively tackle crime, the fear of crime and improve people's quality of life, allowing for their inclusion back into society. See *\*appendix 3\** for examples of how partnership working in Melton has led to reductions in crime and disorder and enhanced the lives of our local community.

## **COMMUNITY SAFETY PRIORITIES 2008-2011**

### **HIGH LEVEL PRIORITIES**

1. REDUCING THE HARM CAUSED BY SUBSTANCE MISUSE, PARTICULARLY ALCOHOL
2. TACKLING DOMESTIC ABUSE
3. TACKLING ANTI-SOCIAL BEHAVIOUR INCLUDING CRIMINAL DAMAGE AND ARSON.
4. REDUCING SERIOUS ACQUISITIVE CRIME PARTICULARLY BURGLARY DWELLING AND THEFT FROM VEHICLE.

### **CROSS CUTTING PRIORITIES**

1. REDUCING RE-OFFENDING OF PROLIFIC AND PRIORITY OFFENDERS WHO COMMIT DISPROPORTIONATE AMOUNTS OF CRIME.
2. REDUCING THE RISK OF FIRST TIME OFFENDING BY YOUNG PEOPLE AND DETER FROM REPEAT.
3. TO INCREASE REASSURANCE AND ENHANCE COMMUNITY SAFETY IN THE BOROUGH, INCLUDING ROAD SAFETY.
4. PRIORITY NEIGHBOURHOODS AND THOSE AREAS WITH THE HIGHEST CRIME AND DISORDER RATES.

### **LOCAL AREA AGREEMENTS**

In addition to the local priorities the partnership also adopts the priorities within the Leicestershire Local Area Agreement (LAA) which are the community safety priorities for the county as a whole:

- ❖ Reducing Re-offending

- ❖ Drugs and Alcohol
- ❖ Violent Crime
- ❖ Anti-Social Behaviour

Each priority identified within this plan includes information on:

- ❖ Background
- ❖ Key Aims
- ❖ Key Objectives
- ❖ Measuring Progress
- ❖ Delivery

## PRIORITY 1 - ALCOHOL MISUSE

*'To reduce the impact of alcohol on crime, disorder and anti-social behaviour'*

### **BACKGROUND**

The recent strategic assessment for Melton identified a rise in alcohol related anti-social behaviour and criminal damage. An increasing number of Police operations responding to anti-social behaviour resulted in the confiscation of large amounts of alcohol from those underage. This is supported by residents with 521 separate complaints during the year, all reporting underage drinking and nuisance.

The Governments alcohol harm reduction strategy "*Safe, Sensible, Social*" 2007 presents the case for joined up action at a local level to tackle alcohol related harm. Alcohol misuse affects individuals, families and the wider community whilst placing a high burden on our health, social care and criminal justice systems. The Leicestershire strategy '*Sensible Measures*' has been developed by looking at the related policies, targets, local data and the recent strategic assessment. It has been developed by key partners including the council, voluntary sector, PCT, police, schools, social care services, licensees, criminal justice system teams, parents, drinkers and community members. Melton aims to adopt this strategy in order to deliver locally.

#### *Melton Alcohol Harm Reduction Strategy - Sensible Measures Melton*

Here in Melton Borough we are committed to preventing the problems caused by the misuse of alcohol and promoting Melton as an attractive, healthy and vibrant place in which to live, work and visit. Partners have met to look at the issues and identify what could be done to tackle them and have subsequently developed an action plan to embed into the 2008 – 2011 Community Safety plan. *Town Centre Evening Economy* - Part of the Melton Alcohol Strategy involves providing a focus on improving the safety of the evening and night time economy. The town of Melton Mowbray accounts for over 50% of all crime and is

a hot spot for alcohol fuelled violence and anti-social behaviour. By working together to understand the key issues we aim to develop a safe, vibrant and inviting night time economy.

### **KEY AIMS**

1. To reduce the impact of alcohol on crime, disorder and anti-social behaviour.
2. To reduce the harm caused to communities as a result of associated crime, disorder and anti-social behaviour.
3. Reduce the harm caused to the health and well being of those who misuse.
4. Increase awareness of the consequences of irresponsible drinking amongst young people.

### **KEY OBJECTIVES**

1. Promote the safe use of alcohol through a programme of information and education (Prevention).
2. Promote safety in the community through appropriate enforcement (Community Safety).
3. To commission structured and effective community based alcohol treatment and support services for those affected by alcohol misuse (Treatment).

### **HOW WE WILL MEASURE SUCCESS**

<b>Indicator</b>	<b>Description</b>
NI20	Assault with injury crime rate
NI17	Perceptions of ASB
NI24	Satisfaction with the way the police and local council deal with ASB
APACS	% of people who perceive people being drunk in their local area to be a problem
NI 195	"Improved street and environmental cleanliness (levels of graffiti, litter, detritus and fly posting)
NI 32	Repeat incidents of domestic violence" (PSA 23"Make communities safer)
NI 47	People killed or seriously injured in road traffic accidents
NI115	Substance misuse by young people
NI 110	Young people's participation in positive activities

## TARGETS

1. To reduce serious violent crime by 3% in 2008/9 based on 2007/08 baseline.
2. To reduce assault with less serious injury by 3% in 2008/09 based on 2007/08 baseline.

## DELIVERY AND LEAD ORGANISATION

The *Leicestershire and Rutland Primary Care Trust* will provide the main lead on the implementation of this priority and as such will provide the management for the action plans. However the aims and objectives highlighted in the plan can only be delivered through effective partnership working which will require the specific support and resources of *Leicestershire Constabulary, Leicestershire Drug Alcohol Action Team* and *Melton Borough Council*.

## PRIORITY 2 - TACKLING DOMESTIC ABUSE

*'Provide a Robust Intervention to Tackle Domestic Abuse'*

## BACKGROUND

Domestic abuse is a significant issue for the Borough of Melton for two reasons. Firstly, due to a significant number of reported incidences of domestic abuse (per head of population), and secondly, due to the often hidden nature of the offence. Over 400 incidences of domestic abuse are reported annually in the area of Melton, with between 33 to 50 separate incidents being reported to the Police every month. The British Crime Survey also estimates that only around 40% of offences are reported.

The rural nature of the Borough also creates some unique challenges for the partnership. The lack and infrequency of local bus services, inaccessibility of police stations and often poor mobile phone signals, create barriers to victims reporting crimes. The make-up of our community also poses challenges in reaching out to all types of residents, such as those from the emerging Eastern European Community and those who are elderly or have a disability.

Partnership Agencies especially those involved with the local Domestic Violence Abuse Forum have been successful in increasing the number of people reporting abuse. Especially over the last six months where there has been a significant rise in the number of reports. Some of the increase can be attributed to changes in local domestic violence outreach work, which has had a very positive effect in the Borough.

## KEY AIMS

1. To reduce the levels of repeat domestic abuse offences.
2. To increase the levels of reported domestic abuse.
3. To improve the partnerships approach to tackling domestic abuse.
4. To increase the levels of offenders brought to justice.

## KEY OBJECTIVES

1. Raising awareness of domestic abuse and the avenues of support.
2. Targeting prevention and intervention work in known hotspots.
3. Encouraging more victims to report domestic abuse.
4. Tackling persistent repeat offenders.
5. Widening outreach work to support victims.
6. Providing representation within MARACs.
7. To explore innovative approaches to domestic abuse reduction programs.
8. To ensure adequate services are in place to support victims seeking refuge from domestic abuse.

## HOW WE WILL MEASURE PROGRESS

Indicator	Description
NI 32	Repeat incidents of domestic violence
CS 2	Number of reported incidences of domestic violence
NI 20	Assault with injury crime rate

## TARGETS

1. To reduce serious violent crime by 3% in 2008/9 based on 2007/08 baseline.
2. To reduce assault with less serious injury by 3% in 2008/09 based on 2007/08 baseline.

## DELIVERY AND LEAD ORGANISATION

*Melton Borough Council* and *Leicestershire County Council* will provide the lead on the implementation of this priority and management of the relevant action plans. However the aims and objectives highlighted in the plan can only be delivered through effective partnership working which will require the support and resources of *Leicestershire Constabulary* and *Leicestershire & Rutland PCT*.

## **PRIORITY 3 - TACKLING ANTI-SOCIAL BEHAVIOUR**

*"To reduce the incidences of serious and persistent anti-social behaviour"*

### **BACKGROUND**

Over the last few years the term anti-social behaviour has come to mean a wide range of things to local people. At one level it can involve dealing with low level nuisance and in its extreme it can include issues such as closing down crack houses.

For the purpose of focusing our efforts, the partnership's approach to tackling anti-social behaviour will focus broadly on the Home Office guideline for anti-social behaviour – *'unacceptable behaviour...that causes, harassment, alarm or distress to one or more persons, not of the same household as the perpetrator'*.

Nationally, anti-social behaviour is a high profile issue, and this is reflected locally in the Melton Borough where last year alone the Police and Melton Borough Council received over 1500 complaints of anti-social behaviour. We have a number of hotspots that we will continue to work on. Across all these hotspot areas a significantly high percentage of complaints related to rowdy and inconsiderate behaviour which drastically affected people's lives.

Overall, a large percentage of anti-social behaviour complaints involve young people with a significant number of these cases relating to alcohol misuse resulting in anti-social behaviour, vandalism and criminal damage. Criminal damage is a volume crime in Melton Borough and accounts for some 40% of all BCS comparator crime.

### **KEY AIMS**

1. To reduce the levels of recorded incidents of anti-social behaviour.
2. To reduce the levels of criminal damage.
3. To reduce incidents of arson.
4. To increase the level of satisfaction amongst residents that ASB is being dealt with effectively

### **KEY OBJECTIVES**

1. Encouraging more people to report anti-social behaviour.
2. Dealing with complaints quickly and efficiently.
3. Identifying perpetrators of anti-social behaviour.
4. Ensuring Melton Borough Council & Melton Police adopt the standardised incremental approach co-ordinately.

5. Focus on tackling anti-social behaviour issues related to young people
6. Engaging more young people in positive activities.
7. Educating young people via schools, youth groups etc. in relation to the consequences of their actions.
8. Educating the wider community regarding what does and does not constitute anti-social behaviour.

## HOW WE WILL MEASURE PROGRESS

Indicator	Description
NI 17	Perceptions of anti-social behaviour
NI 21	Dealing with local concerns about anti-social behaviour and crime by the local council and police
NI 22	Perceptions of parents not taking responsibility for the behaviour of their children in the area
NI 23	Perceptions of people in the area not treating one another with respect and consideration as a problem
NI 24	Satisfaction with the way the police and local council dealt with anti-social behaviour
NI 25	Satisfaction of different groups with the way the police and local council dealt with anti-social behaviour
NI 27	Understanding of local concerns about anti-social behaviour and crime by the local council and police
NI 41	Perceptions of drunk or rowdy behaviour as a problem

## TARGETS

1. Reduce serious acquisitive crime by 3% during 2008/09 based on 2007/08 baseline, including criminal damage.

## DELIVERY AND LEAD ORGANISATION

*Melton Borough Council* will provide the lead on this priority and as such will provide the management and implementation of the actions plans, however the outcomes listed will only be achieved by close co-operation from *Leicestershire Constabulary, Leicestershire Youth Offending Service* and *Leicestershire Youth Service*.

## PRIORITY 4 - ACQUISITIVE CRIME

*'To reduce particularly burglary dwelling and theft from vehicle'*

### BACKGROUND

Levels of domestic burglary in Melton have remained relatively stable over the past 2 years accounting for 11% of all BCS comparator crime in the Borough. The nature of the crime has a huge impact on victims and has a devastating effect on people's feelings of safety, particularly those over the age of 70. Vehicle crime also accounts for a high percentage of crime figures for Melton impacting upon a large number of people. Although theft of vehicle has reduced significantly over the past 3 years, theft from vehicles, despite steadily reducing, remains high accounting for some 17% of all BCS comparator crime during 2007/08.

### KEY AIMS

1. To reduce the levels of domestic burglary throughout the Borough.
2. Reduce the levels of theft from vehicles in the Borough.
3. Reduce the likelihood of being a victim of property crime within the Borough.
4. Provide support for victims of acquisitive crime.

### KEY OBJECTIVES

1. Identify and target hot spots through analysis.
2. Deliver rolling information campaigns to raise awareness of domestic burglary and vehicle crime including the distribution of awareness materials through relevant events and forums.
3. Reduce opportunities of crime through awareness, enforcement and technical equipment.
4. Improve the security of elderly, vulnerable and hard to reach groups.
5. Provide analysis on repeat victims to identify problem profiles.
6. Through existing partner schemes identify vulnerable groups for home safety referrals.
7. Ensure publication of successful initiatives through effective press Liaison

### HOW WE WILL MEASURE PROGRESS

Indicator	Description
NI 18	Adult re-offending rates for those under probation supervision.
NI19	Rate of proven re-offending by young offenders
NI 16	Serious acquisitive crime rate

## TARGETS

1. Reduce serious acquisitive crime by 3% during 2008/09 based on 2007/08 baseline, including
  - Burglary dwelling by 3%.
  - Theft from motor vehicle by 3%.
  - Theft of motor vehicle by 3%.
  - Criminal damage by 3%.

## DELIVERY AND LEAD ORGANISATION

*Leicestershire Constabulary* will provide the lead on this priority and will monitor performance and manage the relevant action plans. However the outcomes listed will only be achieved by close co-operation with all partners including *Melton Borough Council, Leicestershire Fire & Rescue* and the *Leicestershire and Rutland Primary Care Trust*.

## CROSS-CUTTING PRIORITIES

In addition to the 4 priorities identified above the partnership has also identified a number of cross-cutting issues which should be reflected throughout all the work of the partnership.

## PRIORITY 1 - REDUCING RE-OFFENDING

*'Working to prevent re-offending and reduce the impact of offending on the community'*

## BACKGROUND

Over half of all crime is committed by people who have already been through the criminal justice system with over 50% of offenders re-offending within 2 years of release from prison. It is estimated that re-offending costs the economy over £11 billion a year. As a result there is now a new focus on tackling offending behaviour. This focus is not just on Prolific and Priority Offenders, who commit disproportionate amounts of crime, but also those who are at risk of offending. The partnership recognises that investing in initiatives that aim to reduce re-offending and prevent those at risk of offending will ultimately have a huge impact on the crime levels within Melton. Over the next 3 years the MASCP will be working to recognise and understand the factors which can lead to offending in order to design initiatives and shape services in order to prevent future offending.

## KEY AIMS

1. To reduce the levels of proven re-offending by young and adult offenders.
2. To reduce the level of re-offending amongst prolific offenders.
3. To prevent those at risk from offending
4. To reduce the factors which can lead to offending behaviour.

## KEY OBJECTIVES

1. The delivery of mainstream services with adult offenders to prevent re-offending. Probation Service.
2. MAPPOM. The Multi Agency Prolific and Priority Offender Management scheme will deliver work with those offenders identified as causing most harm to communities.
3. The delivery of mainstream services with young offenders to prevent re-offending. This will include pre and post court work along with the provision of specialist services. Youth Offending Service.

## HOW WE WILL MEASURE PROGRESS

Reducing re-offending remains a national priority and is a key element of the new Community Safety PSA (23).

Indicator	Description
NI18	Adult re-offending rates for those under probation supervision
NI19	Rate of proven re-offending by young offenders

## DELIVERY AND LEAD ORGANISATION

*Leicestershire and Rutland Probation Service* will provide the lead and they will be Action Plan managers for these targets. Their representative on the Strategic Group will be expected to provide such performance management information as is required.

*Leicestershire and Rutland Youth Offending Service* will provide the lead on the services for young offenders. Their representative on the Strategic Group will be expected to provide such performance management information as is required.

## PRIORITY 2 - PRIORITY NEIGHBOURHOODS

*'To reduce the levels of crime and disorder by targeting the areas most in need'*

### BACKGROUND

Through the strategic assessment the partnership have identified several priority neighbourhoods. These areas have been chosen due to their high levels of crime and therefore the MASCP will focus crime reduction initiatives within these areas, in order to see the greatest reductions. The current areas identified as Priority Neighbourhoods for 2008/09 are:

- ❖ Fairmead Estate
- ❖ Melton Town Centre
- ❖ Egerton Ward

The partnership will also align with the current Neighbourhood Management model within Melton. These areas have also been identified as priority neighbourhoods due to multiple levels of deprivation including crime, education, health etc and match those areas identified above.

### KEY AIMS

1. To reduce the levels of crime and anti-social behaviour within priority neighbourhoods.
2. To increase reassurance and residents feelings of safety within priority neighbourhoods.

### KEY OBJECTIVES

1. Ensure all theme leads deliver initiatives within the identified areas.
2. To monitor crime levels within priority neighbourhoods and respond with appropriate initiatives.

### HOW WE WILL MEASURE PROGRESS

Indicator	Description
NI 21 or 27	Increase peoples perceptions that the Police and Council understand/ tackle the ASB issues and crime issues that matter to communities.
NI 16	Serious acquisitive crime rate
NI 32	Repeat incidents of domestic violence

CS 2	Number of reported incidences of domestic violence
NI 20	Assault with injury crime rate

## **DELIVERY AND LEAD ORGANISATION**

*All partners* will play a key role in ensuring that priority neighbourhoods are taken into account when delivering crime reduction initiatives.

## **PRIORITY 3 - SAFETY IN THE BOROUGH**

***'To enhance reassurance and increase residents safety in the home and out in the borough by targeting road safety'***

### **BACKGROUND**

Community safety incorporates a number of elements including crime, anti-social behaviour, road safety, all of which can undermine residents feelings of safety and seriously affect people's quality of life. The Melton Area Safer Communities Partnership is dedicated to ensuring residents feel safe in their own homes and whilst out in the Borough. The challenge for our partnership is to ensure that all of our work impacts on the issues which will help residents and visitors feel safe. By doing so the partnership will also ensure that victims of crime and anti-social behaviour feel confident in reporting incidents but also they are given the advice and appropriate support required to prevent repeat victimisation.

For the first time the partnership has included *road safety* within it's community safety plan. Consultation with residents identified speeding as a problem in 3 of the 5 neighbourhood policing beats within Melton despite overall casualties decreasing significantly over the past 2 years.

### **KEY AIMS**

1. To reduce the number of People killed or seriously injured in road traffic accidents.
2. To reduce the number of children killed or seriously injured in road traffic accidents.
3. To ensure that victims of crime and anti-social behaviour feel confident in reporting incidents.
4. To increase levels of public reassurance by addressing the fear of crime and anti-social behaviour through engagement with residents
5. To increase levels of public reassurance by addressing the fear of crime and anti-social behaviour through positive media work highlighting effective initiatives.

6. Ensuring victims are given the advice and appropriate support required to prevent repeat victimisation.

### **KEY OBJECTIVES**

1. Provide direction through the newly established road safety group with a focus on educational work.
  - ❖ Melton road safety group will look to secure funding to deliver activities such as Pass Plus, Rockingham Race Course Young Driver Day, Marketing and Promotions.
  - ❖ To build on the success of previous theatre productions and co-ordinate further productions in KEVII and Brooksby College.
  - ❖ To ensure all partners promote positive achievements through the media.
  - ❖ Ensure all victims of domestic abuse are directed to appropriate support services.

### **HOW WE WILL MEASURE PROGRESS**

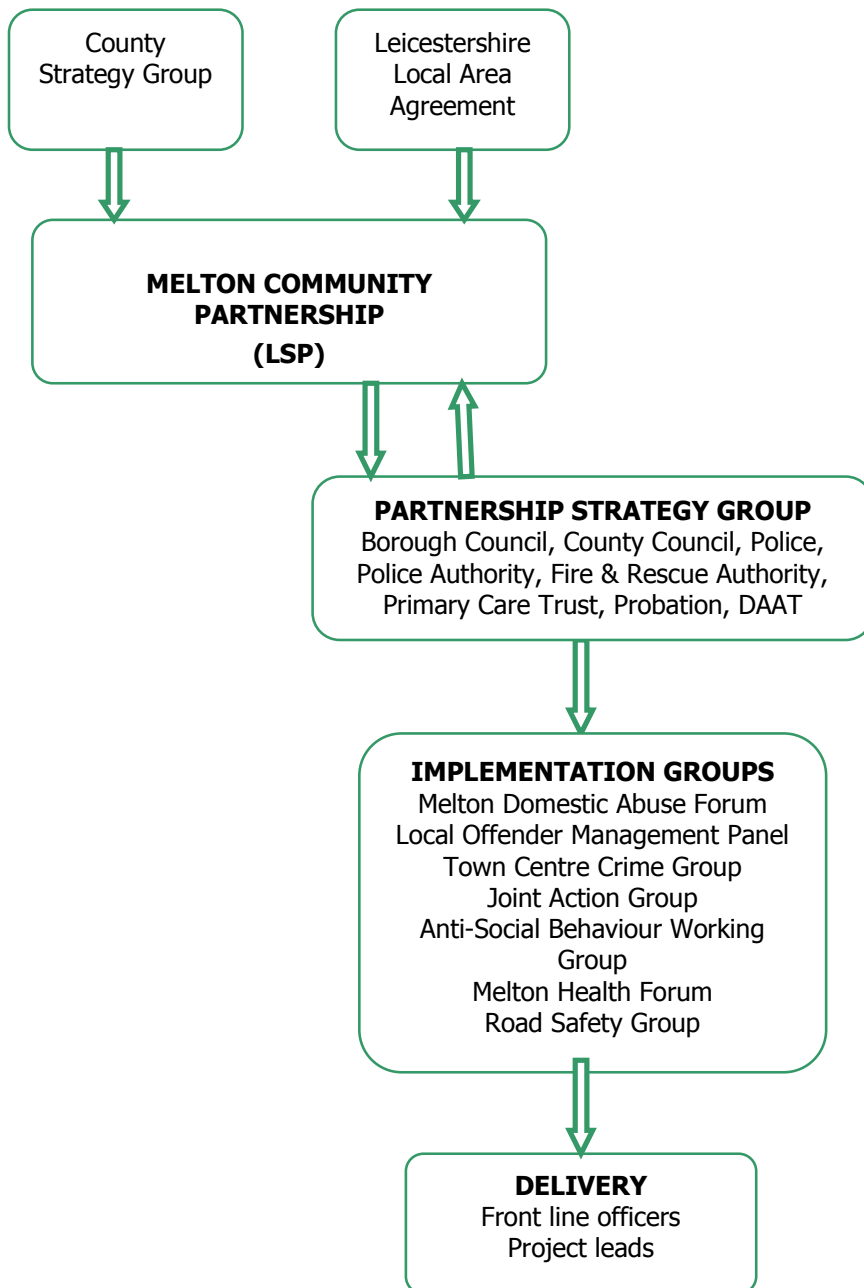
<b>Indicator</b>	<b>Description</b>
NI 47	People killed or seriously injured in road traffic accidents
NI19	Children killed or seriously injured in road traffic accidents
NI 21 or 27	Increase peoples perceptions that the Police and Council understand/ tackle the ASB issues and crime issues that matter to communities.

### **DELIVERY AND LEAD ORGANISATION**

*All partners* have a key role to play in ensuring the partnership meets the needs of victims and residents. *Leicestershire Fire and Rescue Service* will be the action plan manager for the implementation of Road Safety.

## DELIVERY - PARTNERSHIP STRUCTURE

In order to work effectively in delivering the objectives set out within this community safety strategy the partnership has been structured on 3 levels of management:



**PARTNERSHIP STRATEGY GROUP:** (Strategic Level): Includes senior representatives from all the responsible authorities. The role of the group involves carrying out annual strategic assessment, developing a 3-year rolling community safety strategy, agreeing the priorities of the partnership, allocating resources and monitoring and evaluating progress and performance.

**THEMATIC IMPLEMENTATION GROUPS:** (Tactical Level): Role involves formulating action plans around the priorities of the partnership, deploying resources, organising, co-ordinating and controlling the delivery of the strategy agreed by the partnership strategy group. This group will also monitor current crime and disorder issues and trends and will ensure a two way between the strategic and operational arms of the partnership.

**DELIVERY:** Compiled of front line officers who's role is to deliver the Strategy at a neighbourhood level. This will include the delivery of initiatives identified by the Thematic Implementation Groups.

## PERFORMANCE MANAGEMENT

### Effective Partnership Structure

Melton Area Safer Communities Partnership is committed to ensuring that the partnership is the most effective vehicle for delivering crime reduction in the Borough of Melton. Therefore the partnership has developed an improvement plan which incorporates the key aspects that underpin effective partnership working as identified in the 'hallmarks of effective partnership working' by the Home Office. This improvement plan will be revised annually and will be managed by the Strategy Group.

### Delivering Priorities

Each of the priorities identified within this 3 year plan are supported by detailed action plans which outline appropriate initiatives, timescales, lead organisation and measures of success. Each action plan will have a designated owner who's responsibility is to regularly monitor performance through an agreed performance management framework *\*see appendix 2\** to ensure successful delivery.

### Working Countywide

By working with other partnerships and agencies towards the Leicestershire LAA and as part of the Leicester, Leicestershire and Rutland Community Safety Programme Board the partnership aims to use resources effectively in order to achieve the best outcomes for those who live in, work in and visit Melton, and

Leicestershire as a whole. Where possible the MASCP also works closely with other partnerships across smaller areas on common issues.

### **Assessment of Police and Community Safety (APACS)**

APACS will be introduced in 2008/09 with the first area based reports being published in 2009/10. APACS is intended to replace existing police performance frameworks and complement Local Area Agreements and Comprehensive Area Reviews. There will be 5 core areas:

- ❖ Promoting safety, i.e. anti social behaviour, road safety
- ❖ Tackling crime, i.e. burglary, violent crime
- ❖ Serious crime and protection
- ❖ Confidence and satisfaction
- ❖ Organisational management, i.e. value for money, financial management

The analytical techniques for APACS are still in development but it is likely to include some form of 'peer comparison.' Further guidance and details of the indicators will be published early in 2008.

The Strategic Group will need to ensure that its performance management is sufficiently aligned to the 5 areas identified above to ensure that an APACS assessment is not an onerous task.

### **Public Service Agreements**

National Public Service Agreements provide the partnership crime reduction targets and goals over the 3 years of the community safety plan. The national PSA which will govern the work of this partnership for 2008 – 2011 will be PSA 23 and PSA 25.

**PSA 23** 'Make Communities Safer' incorporates the following:

- ❖ Tackling the most serious violent crime including domestic abuse.
- ❖ Reduce re-offending.
- ❖ Tackle crime, disorder and anti-social behaviour of the greatest priority within localities.
- ❖ Tackle acquisitive crime of the greatest priority within localities.

**PSA 25** 'Reduce the Harm Caused by Alcohol and Drugs' incorporates the following:

- ❖ Number of drug users in effective treatment.
- ❖ Number of alcohol related admissions.
- ❖ The rate of drug related offending.
- ❖ The percentage of the public who perceive drug misuse or dealing/drunks and rowdy behaviour as a problem in their area.

## COMMUNITY ENGAGEMENT

Community engagement is the process of involving people in decisions that affect them. Engagement covers a range of activities: promoting and communicating about the work of the partnership, offering opportunities for people to query actions and activities, reporting on progress and involving people in priority setting.

Melton Area Safer Communities Partnership is committed to ensure the work of the partnership is informed by engagement with local communities. As a priority, MASCP will support and make active use of the available community engagement channels:

- ❖ *Area Forums* - 3 forums covering Melton meeting 2-3 times a year. Forum members consist of District and County Councillors and representatives from Parish Councils, alongside a range of community representatives. Forum meetings are open to the public and the public actively participates in the meetings. Area Forums are supported by Melton Borough Council and Leicestershire County Council, Leicestershire & Rutland Primary Care Trust and the Leicestershire Constabulary.
- ❖ The *Fear of Crime Survey* will be carried out on a biannual basis, using representatives from the Citizen Panel and other community groups.
- ❖ The partnership have recently developed it's own consultation document to aid the ongoing consultation currently occurring through *Neighbourhood Policing* and residents Groups.
- ❖ Partnership *Weeks of Action* are multi agency weeks which take place around the borough. They involve many different partners who work together to tackle issues highlighted for that particular area. Each day always includes an opportunity for the public to meet and talk to officers from the police, fire, council and other partners
- ❖ Legislation going through Parliament will allow for the development of *Community Calls for Action*. This will enhance the role of the ward councillor to raise matters of concern with the partnership and give a scrutiny role for councillors on the work of the CSP.
- ❖ The Partnership will also be required to undertake an annual "*face the people*" session where senior officers from the partnership will attend to take questions from the public. This will inform in the future the annual Strategic Assessment.

## **EQUALITIES**

Melton Area Safer Communities Partnership is committed to serving all members of its communities effectively, and ensuring that all actions and plans consider implications for a variety of different groups and sections of the community.

It will work to ensure people are not excluded or disadvantaged because of their Race, Disability, Gender, Age, Religion and belief, or Sexual Orientation.

In order to develop a better understanding of its communities and ensure that any negative consequences for a particular group or section of the community are eliminated, minimised or counterbalanced by other measures the Partnership will use relevant information from its partners to produce an Equality Impact Assessment for this Community Safety Plan.

## **APPENDIX 1 MAKE UP AND CONTRIBUTION OF PARTNERS**

The Melton Area Safer Communities Partnership is made up of a number of agencies, some of which are required by law to work together to reduce crime and disorder. The *statutory agencies* responsible for the work of the partnership are:

- ❖ Melton Borough Council
- ❖ Leicestershire Constabulary
- ❖ Leicestershire Police Authority
- ❖ Leicestershire County Council
- ❖ Leicestershire & Rutland County Primary Care Trust
- ❖ Leicestershire Fire & Rescue Authority

Other *non-statutory* agencies who are involved and contribute to the work of this partnership include:

### Voluntary Action Melton

- ❖ Leicestershire Drug and Alcohol Action Team (DAAT)
- ❖ Leicestershire Women's Aid
- ❖ Leicestershire & Rutland Probation Service
- ❖ Leicestershire Youth Offending Service
- ❖ Leicestershire Youth Service
- ❖ Local Businesses – Pubwatch & SMART
- ❖ Leicestershire Connexions
- ❖ Melton Town Estate
- ❖ Melton Parish Councils
- ❖ Leicestershire Neighbourhood Watch Associations
- ❖ Leicestershire Housing Authority
- ❖ East Midlands Housing Association
- ❖ Demotford Housing Association

Other relevant organisation and agencies also support the partnership in tackling crime and disorder in Melton.

### **CONTRIBUTION OF PARTNERS**

Each statutory partner within the Melton Area Safer Communities Partnership agrees to:

- ❖ Participate in the strategic development, performance management and delivery of the partnership's priorities and actions.

- ❖ Incorporate priorities and actions from the Community Safety Plan, as relevant, into their own plans, and therefore provide appropriate mainstream resources to deliver these priorities and actions.
- ❖ Provide appropriate attendance to and involvement in the partnership's delivery structure to enable it to function effectively.
- ❖ Share data and information in accordance with the Partnership and Leicestershire County Information Sharing protocols for the prevention of Crime and Disorder to the benefit of the communities within the Borough of Melton.
- ❖ Ensure their duties to consider the impact of their actions on Community Safety under Section 17 of the Crime & Disorder Act 1998 are fulfilled by their organisation.
- ❖ Ensure the partnership receives full support from their organisation

**APPENDIX 2  
PERFORMANCE MONITORING FRAMEWORK**

<b>Name of Partnership</b>	Melton Area Safer Communities	
<b>Membership</b>	Statutory Partners: Leicestershire Constabulary etc	
	Non-Statutory: Leicestershire DAAT	
<b>Reporting Arrangements</b>	Bi-Monthly to the MASCP Core Group	
<b>Governance</b>	The Partnership has a terms of reference which is reviewed annually	
<b>Funding Arrangements</b>	Local Area Agreements BCU Partnership Fund Melton Borough Council Community Safety Budget	
<b>Purpose and Priorities</b>		
"Working together to reduce crime and the fear of crime in the Borough of Melton." (Priorities determined through the annual strategic assessment)		
<ul style="list-style-type: none"> <li>• Reduce reoffending amongst prolific and priority offenders</li> <li>• Reduce the harm caused by drug and alcohol misuse</li> </ul>		
<b>Relates To Other Strategies/Priorities</b>		
Sustainable Community Strategy Local Policing Plan Local Area Agreement etc		
<b>Outcomes/Measurable Targets</b>		<b>Progress to date</b>
E.g. PSA Targets		e.g. crime dashboard
national indicators		
LAA Targets		
<b>Thematic Implementation Groups</b>		
<b>Theme</b>	E.g. ASB Working Group	
<b>Owner</b>	ASB Officer	
<b>Targets (And Action Plan)</b>	<ul style="list-style-type: none"> <li>• To reduce the reporting of ASB from 2007/08 baseline by 5%.</li> <li>• To reduce the number of first time entrants into the CJS (LAA target)</li> <li>• Increase YISP referrals...</li> <li>• Diversionary initiatives in Priority neighbourhoods etc.</li> </ul>	
<b>Performance</b>	ASB currently down by... Number of first time entrants reduced by...this quarter	
<b>Related Projects, Initiatives and Progress</b>	Any projects delivered/funded e.g. breaking boundaries has run 5 times this quarter, engaged 50 young people including 12 referrals from YISP/YOT etc.	
<b>Issues for Consideration</b>	<ul style="list-style-type: none"> <li>• Crime and Disorder Act Review Legislation Requirements</li> <li>• New Measures available through Violent Crime Reduction Bill 2007</li> </ul>	
<b>Risks to Achieving Partnership Objectives</b>	E.G increase in particular crime trend - cross border crime etc	

## **APPENDIX 3 MASCP PROGRESS REPORT**

### **Town Centre Crime Evening Economy Pilot – Chillout Zone**

During the evenings there is convincing evidence that the Melton town centre is becoming a safer place to visit. Our work in partnership with the police on licensing and taxi pick up points as part of the introduction of the 'chillout' pilot scheme (delivered through our Licensing powers) appears to have contributed to a significant reduction in violent crime in the town centre, which is reported by the police to be down by around 50%.

### **Youth Diversionary Initiatives**

Throughout the last 3 years the partnership has directed much of its work and resources towards young people and early intervention which has included an array of diversionary projects such as:

*Pyramid Project:* After school programme supporting those young people who do not engage fully in school or with peers.

*Soccer Scam:* Providing financial support to a free football programme during the evenings.

*Breaking Boundaries:* Free activities of arts, crafts and sports for young people during school holidays

### **Family Intervention Project**

During 2007 the MASCP secured funding to develop a family intervention project in Melton. This innovative new initiative provides support to those families identified as problematic due to high levels of anti-social behaviour. The project works by providing intensive in home support and services including parenting advice, budget management, healthy eating and employment advice. By providing these services the project aims to reduce the social exclusion often suffered by such families and thereby reduce the associated anti-social behaviour and crime.

### **Multi-Agency Prolific and Priority Offender Management (MAPPOM)**

Prolific offenders commit disproportionate amounts of crime and the MASCP understand investing in projects to reduce re-offending will have a significant impact on crime levels in the Borough. Therefore since 2004 the MASCP have provided annual funding to help facilitate the Leicestershire MAPPOM scheme designed to reduce the offending of prolific offenders. On average the scheme works with 15 prolific offenders in Melton a year and has in most cases reduced re-offending in over 90% of cases. The project has been so successful the service is now commissioned through the Safer Communities LAA.

During 2005-2008 the MASCP invested significantly in initiatives designed to tackle anti-social behaviour and provide reassurance to residents:

**Police Community Support Officers**

During 2005 the Borough of Melton was one of the first to introduce Police Community Support Officers on to the streets. PCSOs provide visual reassurance to residents and work on referral to hotspot areas for anti-social behaviour. The MASCP initially provided funding for 2 PCSOs in Melton over 2 years. Due to the success of their introduction they have now been mainstreamed into Police budgets.

**CCTV Development**

Since 2004 the MASCP has invested heavily in the development of the town centre CCTV to help support the police, shops (SMART scheme) and licensed premises (Pubwatch) in keeping the town safe and crime free during the day and evening. More recently the partnership successfully secured funding to expand the CCTV system into the priority neighbourhoods of Egerton and Fairmead and aims to help deter crime and ASB in these areas whilst enhancing resident's feelings of safety

**Anti-Social Behaviour Officer**

During 2006 the MASCP successfully secured funding to introduce an anti-social behaviour officer specifically for Melton. The ASB officer works closely with the Police, Council, residents and other agencies to help tackle on going issues through enforcement of anti-social behaviour legislation and through youth diversionary activities at a local level