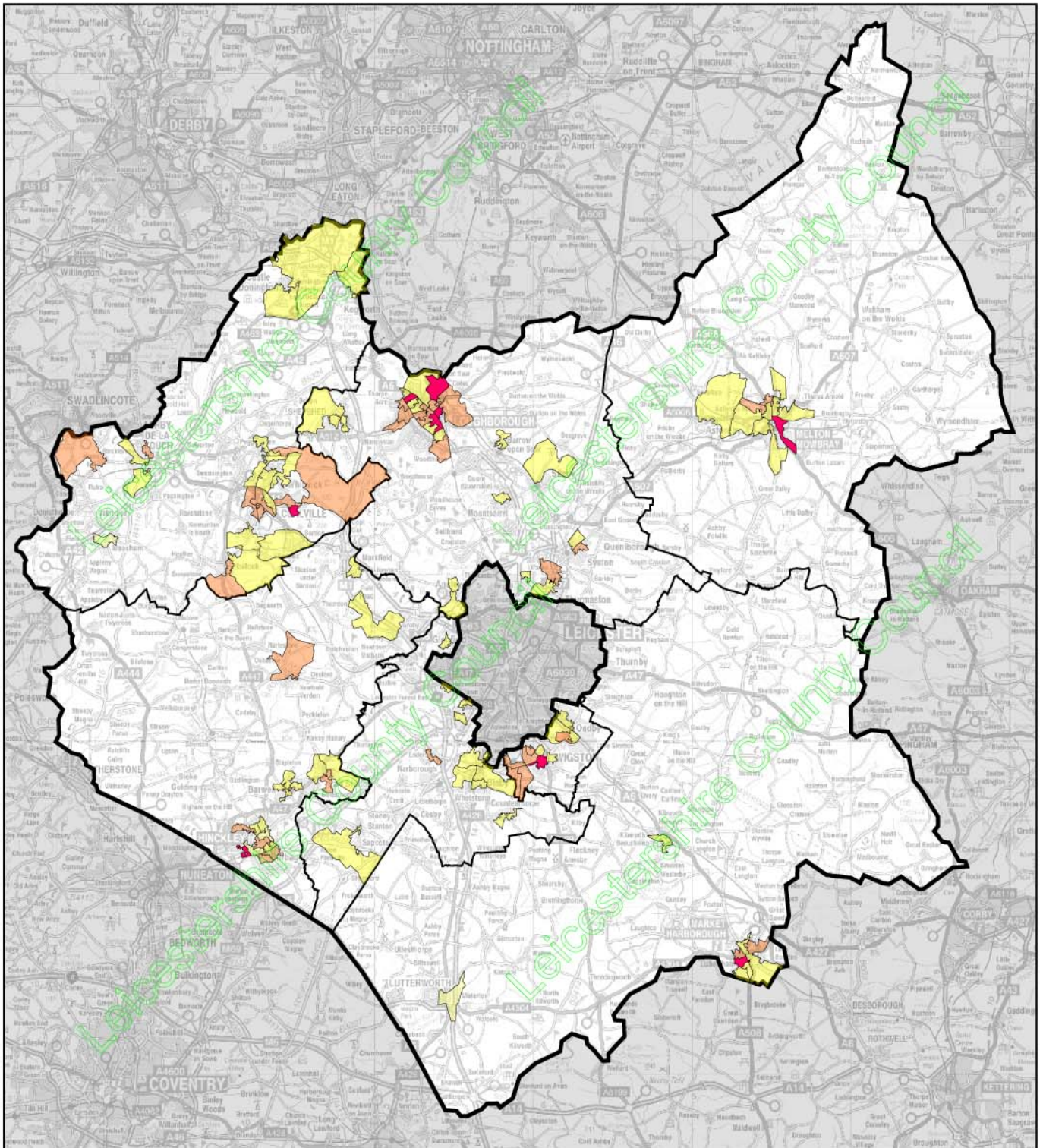


Figure 5.2
Areas of low car ownership



Note:
 This map shows census super-output areas each with an average population of about 1,500

Not to scale

Key

Areas where more than 20% of households do not have a car

- 40% - 65% without car
- 30% - 40% without car
- 20% - 30% without car

© Crown copyright 2006. All rights reserved
 Use of this image is limited to viewing on-line and printing one copy.
 Leicestershire County Council. LA100019271