

## What can an Early Years Educational Psychologist recommend?

Depending upon the nature of your child's development:-

The educational psychologist can give parents suggestions for play, for learning activities, for language games or for behaviour management.

The educational psychologist may recommend that a child go to the local playgroup, or may suggest some special form of help, as appropriate:

- ❖ Early Years SEN Inclusion teachers.
- ❖ Visual and Hearing Impairment teachers.
- ❖ Autism Outreach teachers.
- ❖ Leicestershire Portage Service. Portage home visitors support parents in the home setting for teaching their child. The Educational Psychology Service manages this service.
- ❖ Special Early Years Placements:  
Sketchley Hill Menphys, Burbage  
Tel: 01455 890 684  
Menphys Centre, Wigston  
Tel: 0116 288 9977  
Shelthorpe Children's Centre  
Tel: 01509 264 876

## Will my child need a Statement of Special Educational Need?

The Early Years Educational Psychologist working with your child will discuss with you and with other professionals whether a statutory assessment should be undertaken before your child starts school.

If it is felt that your child needs a statutory assessment (which may lead to a Statement of Special Educational Needs) an Early Years Educational Psychologist will advise on this and start the process.

If your child does not need a statutory assessment, the Educational Psychologist will liaise with you, with professionals who are already involved and with your child's school to let teachers know what has been discovered about your child's needs and what the school should do to meet them.

## Who requests our involvement?

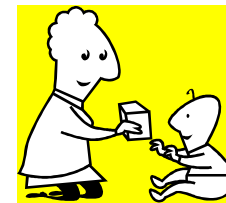
Parents or adults working with children under five may notice that the child may need some special help with their development and education.

If, after initial discussion and involvement from these adults it is felt that further advice is necessary, a referral by the parent, or with parental consent, can be made to the Early Years Referral Panel, at Educational Psychology Service.



## A Leaflet for Parents and Carers

### EDUCATIONAL PSYCHOLOGISTS WORKING IN EARLY YEARS



The Psychology Service  
Children & Young People's Service  
Leicestershire County Council  
County Hall  
GLENFIELD  
Leicestershire  
LE3 8RF

Tel: 0116 305 5100  
Fax: 0116 305 5184  
E-mail: [psychology@leics.gov.uk](mailto:psychology@leics.gov.uk)  
[www.leics.gov.uk](http://www.leics.gov.uk)

## Introduction

- ❖ We are a team of Educational Psychologists working on behalf of the Leicestershire Children and Young People's Service.
- ❖ Our focus is to work with children who are under five years, helping them to be ready for school.
- ❖ We bring our knowledge of psychology and child development to understand children's educational needs.
- ❖ We work closely with parents and other adults concerned with children's education and social and emotional aspects of learning.
- ❖ Our aim is to plan with parents and others, opportunities to improve important aspects of children's learning and development.

## What do Early Years Educational Psychologists do?

An early years Educational Psychologist aims to make use of the special knowledge parents have about their children by listening carefully and asking questions.

An Educational Psychologist may watch a child play or may play with him or her to see how they respond. This may involve asking a child to do some puzzles, finish some drawings or to answer questions. This can provide information about how the child feels, behaves and thinks about things.

An Educational Psychologist may help parents and other professionals working in early year's settings to support children's education. They provide consultation and training about learning and development. They promote safe, healthy and supportive environments.

An Educational Psychologist may advise on adopting individualised and small group approaches to provide young children with opportunities to enjoy and achieve.

Educational Psychologists are specialists in child development, play, learning and behaviour. They have knowledge of different kinds of approaches to support and include all children, including children with special educational provision. They place high emphasis on parental involvement.

Early Years Educational Psychologists are involved in casework in the following ways:

- ❖ We meet with parents and carers either at home or at an early years setting.
- ❖ We visit the wide range of childcare settings such as playgroups, nurseries and children's centres.
- ❖ We liaise with other professionals and adults involved with the child.
- ❖ We offer professional advice to parents and other key people who are in a position to make a difference.
- ❖ We offer training to staff in all early years settings.
- ❖ Through our involvement we are able to give advice about the most appropriate early years settings.
- ❖ We report our assessment findings.
- ❖ We continue to monitor progress and offer advice in line with the child's developmental needs, both at home and in their early years settings.
- ❖ As the child approaches school age we will collaborate with key adults, especially parents, to consider their needs as they enter school.