

Chapter 7 - Delivering the Plan



This section explains the organisational arrangements and processes that we are putting in place between the partners to deliver this Plan. We will make sure that together we maintain our current performance in core services and make the improvements outlined in Chapter 6.

Leicestershire has a strong track record of highly effective partnership working. We are building on these strong foundations to take the first steps towards **Children's Trust** arrangements. Children's Trusts are the government's model for improving universal, targeted and specialist services. They aim to improve co-ordination and responsibility for services at both a strategic and operational level.

Leicestershire's Children and Young People's Plan links closely with other local plans. '**Leicestershire Community Strategy**' is produced by 'Leicestershire Together'; a partnership of organisations that delivers public services in Leicestershire. **The Local Safeguarding Children Board** produces 'Local Safeguarding Children Board Business Plan', which is a partnership of organisations committed to ensuring the safety of children in Leicestershire. '**Safer Communities Plans**' produced by local Crime and Disorder Reduction Partnerships, and the '**Youth Justice Plan**' produced by the Youth Offending Service, are part of community safety partnerships which aim to prevent and reduce overall crime including youth crime. These partnership bodies work closely together on areas of overlap to ensure good co-ordination.

Appendix C shows Leicestershire's Planning structure.

For the local authority a new **Director of Children's Services** and **lead Member for Children's Services** were appointed in July 2005. A new 'Children and Young People's Service' was formed in April 2006 responsible for education and children's social care services.

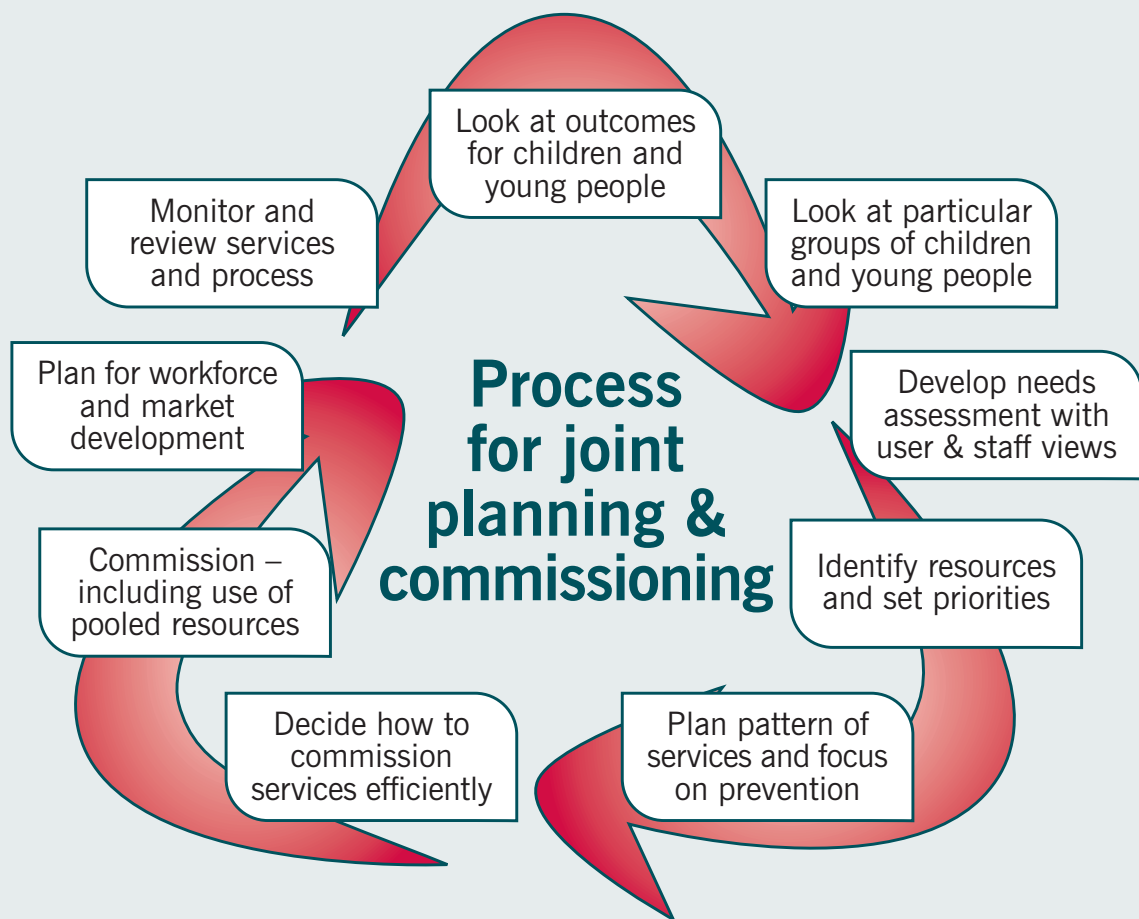
A new **Children and Young Persons' Services Board**⁹ was established in February 2005 involving all the key stakeholders at Chief Officer and Non-Executive Member level. The Board will be responsible for ensuring this Plan and the Children and Young People's block of the Local Area Agreement are implemented, reviewed and performance managed. We will review the Plan annually. We will use our consultation processes to listen to the views of agencies, children and young people and parents and carers and to report progress on the priorities.

The Children and Young Persons' Services Board is likely to evolve into the 'governance body' for Leicestershire's Children's Trust arrangements. Partner agencies, including representation from the Voluntary and Community Sector Children and Young People's Services¹⁰ Forum, will work together during 2006/07 to determine the type of Children's Trust arrangements they want to see in place and these will be implemented during 2007/08.

The Board will be developing a commissioning model that is right for Leicestershire making best use of all

⁹ For terms of reference for the Board visit www.leics.gov.uk/lecm

¹⁰ see Glossary of Terms



11

available resources.

The Board will also be considering the workforce implications of an integrated approach. The new agenda for children and young people requires a **workforce** that is flexible, skilled, well-led and supported by effective shared systems and processes. This new approach will require new skills and the breaking down of professional and institutional boundaries. We will be developing our workforce strategy to meet these challenges.

Leicestershire's Children and Young People's Strategic Partnership was established in September 2001 following guidance from central government. Its approach to partnership working and planning and to developing integrated services for vulnerable children and young people has been consistently praised both by a number of inspections of our statutory services and by other monitoring of the council's performance. The Partnership, working through a number of sub-groups, is currently responsible for the operational

delivery of the outcomes for vulnerable children within the Children and Young People's Plan and will report back to the Board. The Board will make changes in 2006-07 to the reporting systems for all services. Reporting for universal and targeted services will be combined to ensure a child centred approach.

Leicestershire has already made progress in **integrating frontline service delivery**. The Children and Young People's Strategic Partnership has driven the development of innovative integrated services in the county. Some examples of successful partnership working are given in Chapter 4.

In Leicestershire the Bridges Project is leading on the **Common Assessment Framework, the Lead Professional Role and Local Information Sharing**.

The Common Assessment Framework for children and young people is a key part of the Children Act 2004. It focuses on early intervention to address problems before they get worse. It is a nationally standardised approach to conducting an assessment of the needs of

a child or young person and deciding how needs should be met. Leicestershire, Leicester and Rutland are one of thirteen areas taking part in the national evaluation of the Common Assessment Framework.

Trials of the Common Assessment form have begun in multi agency meetings at Castle Rock High School, Coalville and in other pilot areas in Leicester and Rutland. They have been well received by children and young people and staff. Multi-agency training on the Common Assessment Framework is currently underway.

The Lead Professional role (could be professional from any agency agreed jointly as the most appropriate to take the lead with a particular child/family) is key in supporting the principles of the Common Assessment Framework. When a child or young person with additional needs requires support from more than one service the lead professional will:

- Act as a single point of contact for the child and family who is able to support them in making choices.
- Ensure children and families receive appropriate interventions when needed which are well planned, regularly reviewed and effectively delivered.
- Reduce overlap with other practitioners.

The local Information Sharing project has developed a well used online service directory and provides training for practitioners. The government has recently announced that resources will be made available to introduce a fully operational information index to support this work in all areas of England by the end of 2008. It will provide a tool to support communication among practitioners across education, health, social care and youth offending.

