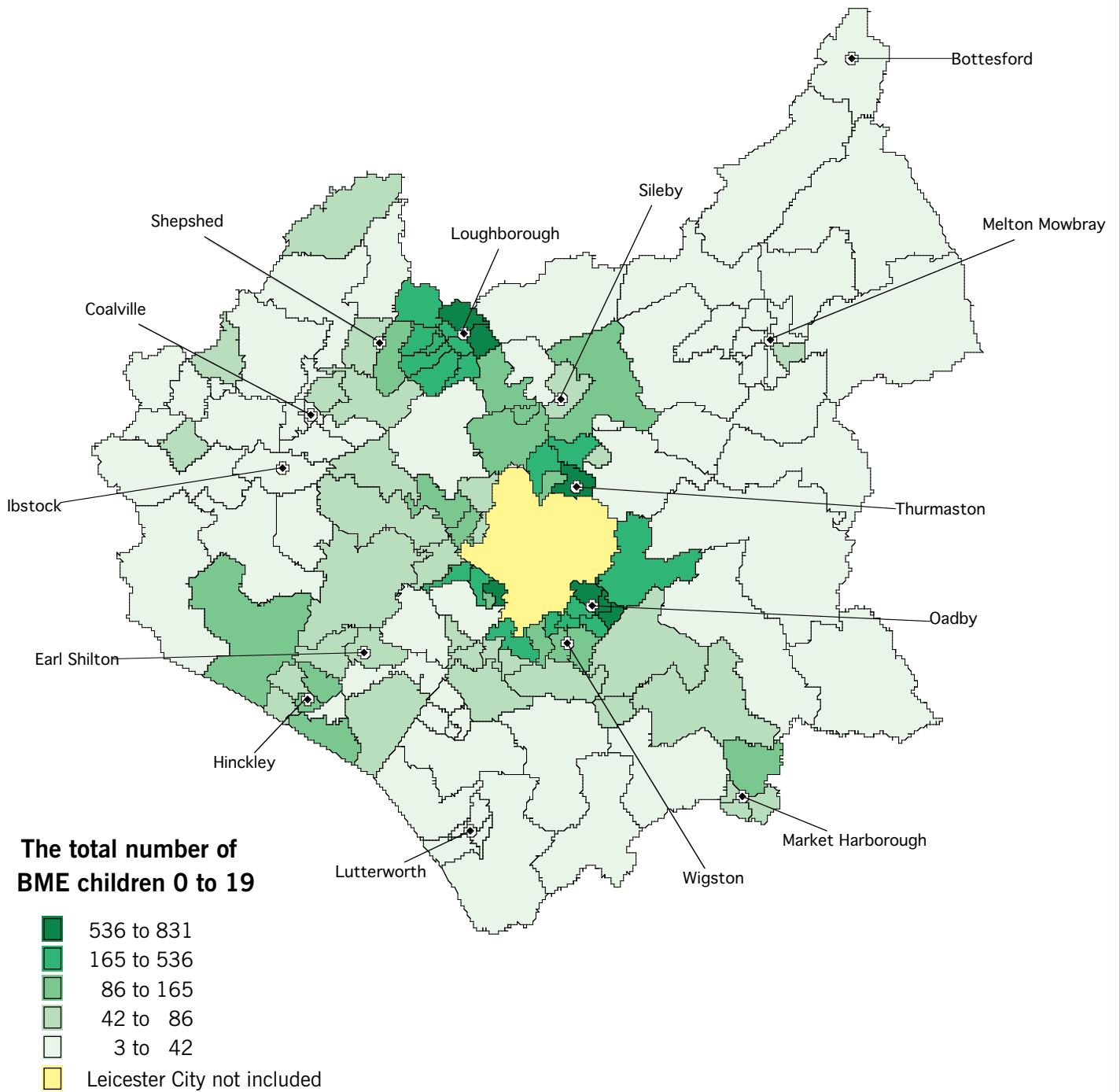
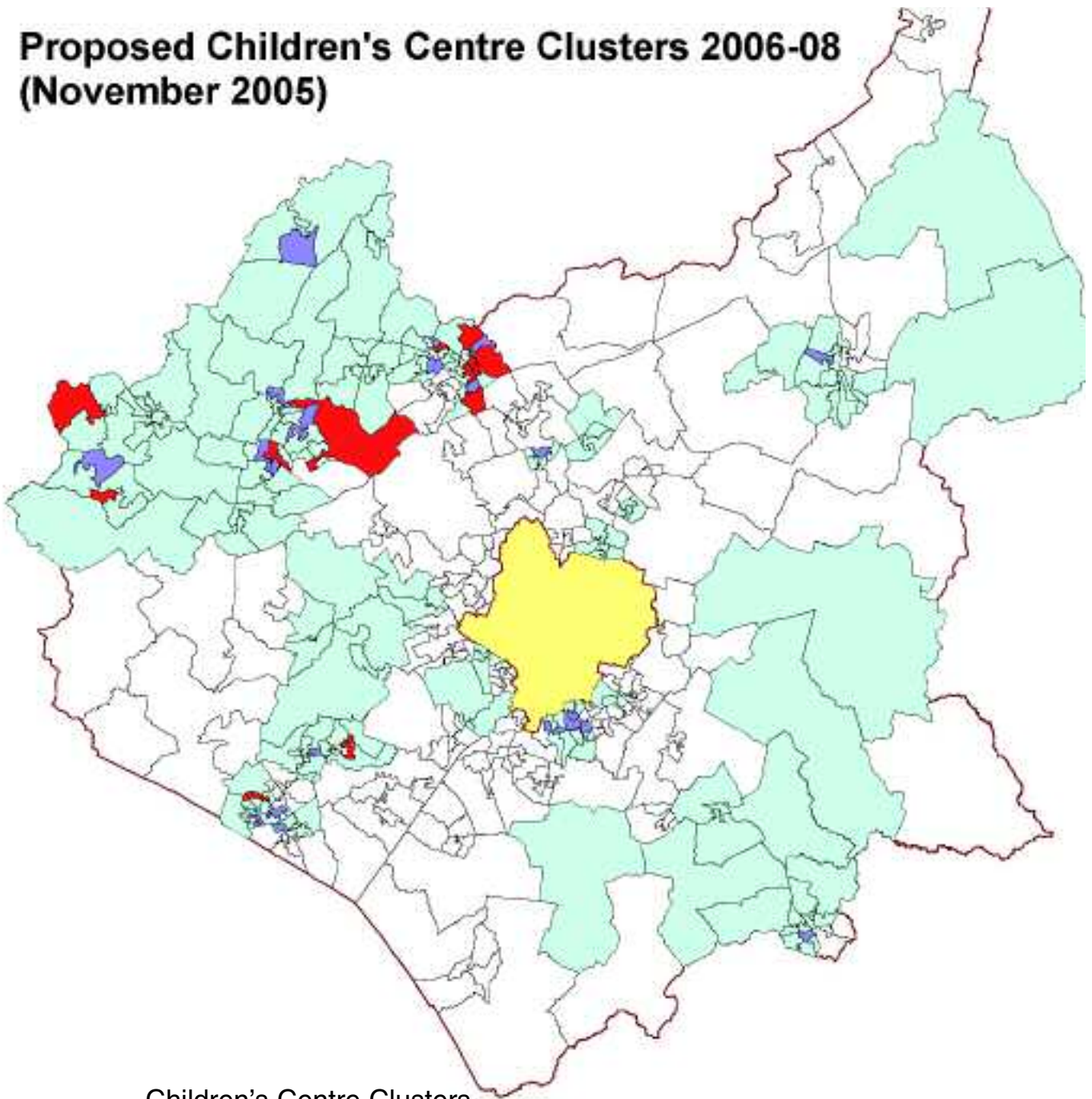


Appendix E - Location of Children from Black and Minority Ethnic Groups across Leicestershire



Appendix F – Areas of Relative Deprivation in Leicestershire

Proposed Children's Centre Clusters 2006-08 (November 2005)



Children's Centre Clusters

- 30% Deprived Super Output Areas (SOAS) (2004 IMD)
- 40% Deprived Super Output Areas (SOAS) (2004 IMD)
- Areas Identified By Local Data (2001 Census / 2004 IMD)
- Leicester City not included

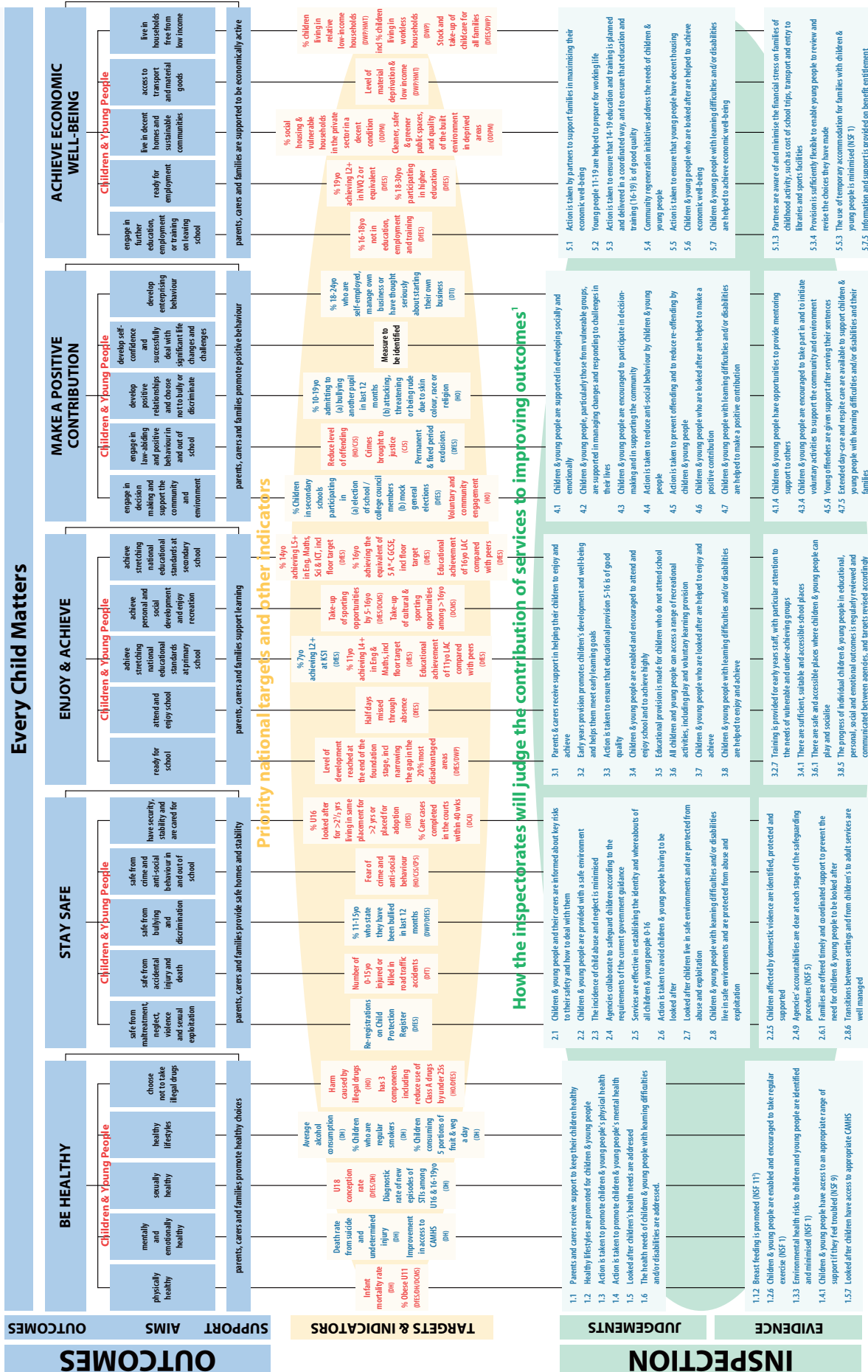
Source: 2001 Census, Output Area Boundaries
Crown copyright 2003. Crown copyright material
is reproduced with the permission of the Controller
of HMSO.

Appendix G – Every Child Matters Outcomes Framework

Version 2.0
Published with Every Child Matters: The Progress of Children's Services
This replaces all other previous versions

OUTCOMES FRAMEWORK

There are 26 PSA targets in total and 13 other key indicators. For the PSA on stability of looked after children the associated performance indicators are also shown under Enjoy & Achieve



For queries please contact: everychildmatters@dfes.gsi.gov.uk
NB. All the judgements are shown but only examples of the evidence used are given for illustrative purposes

Footnotes
1 updated in line with the inspection of children's services: key judgements and illustrative evidence published by Ofsted (11 August 2005)
2 NSF relates to the National Service Framework, with the number referring to the corresponding standard

E4 DFES-1088-2005