

Introduction

Charnwood Museum is a small friendly museum which features a wide range of exhibits reflecting the history, geology, archaeology and traditional industries of Charnwood and the surrounding area.

Our sessions provide fun, stimulating learning experiences that offer children the chance to handle museum artefacts and resources that really bring the subject to life.

We offer a tailor-made approach to enable you to get the most out of your time at the museum. Each itinerary consists of independent gallery activities combined with an education session of your choice. This fills a morning or afternoon (1½ - 2 hours).

Prices

There is a small charge per pupil for each educational session, please contact the Museum Learning Team for details.

Further Information

Charnwood Museum is situated in Queen's Park close to the centre of Loughborough. The Museum is fully accessible for wheelchair users. Our learning sessions take place in the education room which has a maximum capacity of 24 people.

Risk assessments are available for all learning sessions on request.

If you would like to come for the whole day, half day sessions can be combined to make a whole day of activities. There is a limited amount of space for eating lunch indoors but groups can eat lunch outside in Queen's Park on fine days.

If you have any questions about the learning sessions at Charnwood Museum please contact the Museum Learning Team on 0116 305 3424 or email us at muslearningteam@leics.gov.uk

How to find us



Charnwood Museum, Queens Park, Granby Street, Loughborough, Leicestershire LE11 3DU

Tel: 0116 305 3424

E-mail: muslearningteam@leics.gov.uk

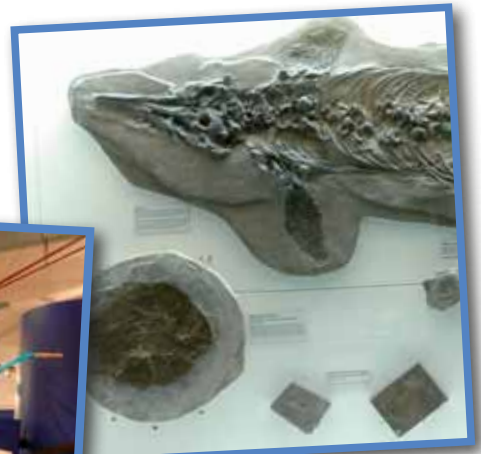
www.leics.gov.uk/charnwoodmuseum



Parking is available in Granby Street car park nearby

FREE
pre-visit
for school staff

Call or see our website for details



charnwood
museum

Educational
VISITS

Must see!

www.leics.gov.uk/charnwoodmuseum

Leicestershire: a great place to live and visit

Activities on Offer

Dinosaur Detectives (EYFS, KS1)

Pupils can excavate a dinosaur, make their own fossil and go on a dinosaur hunt around the museum in this exciting session!

Session Length 45 minutes. Max 40 pupils

Curriculum Links

EYFS Knowledge & Understanding of the World, Communication, Language & Literacy.

KS1 Science: Variation, Sorting and Grouping,
English: Speaking & Listening

The Old Toybox (EYFS, KS1)

Let your pupils investigate and play with a range of replica 'toys from the past' and compare and contrast them with toys from today. This session is also available as an outreach session in your school as 'Travelling Toybox'.

Session Length 45 minutes. Max 40 pupils

Curriculum Links

EYFS Knowledge & Understanding of the World, Communication, Language & Literacy.

KS1 History: Historical Interpretation & Enquiry,
English: Speaking & Listening

Objects from the Past (EYFS, KS1)

A selection of household objects from the past (mostly Victorian) can be investigated by pupils, who can match them up to their modern equivalents to compare and contrast objects from two different periods.

Session Length 45 minutes. Max 40 pupils

Curriculum Links

EYFS Knowledge & Understanding of the World, Communication, Language & Literacy.

KS1 History: Historical Interpretation & Enquiry,
English: Speaking & Listening



New Tales for Old (EYFS, KS1 & KS2)

By enjoying a story about one of the museum's most interesting objects, pupils will also learn storytelling skills to use in writing back at school. This workshop links well with the 'Objects from the Past' and 'Old and New' sessions to make a whole day visit.

Session Length 30 - 45 minutes. Max 30 pupils

Curriculum Links

EYFS Communication, Language & Literacy

KS1 & KS2 Speaking & Listening, Writing

Second World War (KS2)

Whilst learning about the lives of those on the Homefront during the Second World War, pupils can handle a selection of original wartime artefacts, or can try their hand at code breaking in the Museum. Why not include a trip to the neighbouring Carillon War Memorial Museum to make a full day visit.

Session Length 50 minutes. Max 40 pupils or 60 pupils with Carillon.

Curriculum Links

KS2 History: Historical Interpretation & Enquiry,
English: Speaking & Listening

Old & New (KS2)

Pupils can get hands on with a selection of historical objects – can they find out what they are? Pupils use speaking, listening and investigative skills to expand their knowledge of historical objects and compare them with their modern equivalents.

Session Length 45 minutes. Max 40 pupils

Curriculum Links

KS2 History: Historical Interpretation & Enquiry,
English: Speaking & Listening

Local History (Victorians) (KS2)

Your pupils can learn about the homes, lifestyles and occupations of six Loughborough families from the Victorian period. This whole day session includes a walk around the town, the chance to handle the type of objects that these families would have used, plus Victorian themed gallery activities.

Session Length 1 hour self-led walking trail of Loughborough followed by a 45 minute education session. Max 40 pupils

Curriculum Links

KS2 History: Historical Interpretation & Enquiry,
English: Speaking & Listening

Sculpture (KS2)

Using sculpture from the County's Artworks collection, pupils will investigate colour, material, texture and subject matter. Pupils will also create their own mini sculpture to take away and can practice their drawing skills around the gallery.

Session length 60 minutes. Max 40 pupils

Curriculum Links

KS2 Art & Design: Knowledge & Understanding, Investigating and Making Art, Craft and Design.

Rocks (KS2)

Let your pupils find out about rocks and minerals with our extensive handling collection. They can identify different rocks using keys, learn about the different uses of rocks in everyday life and find lots of examples of rocks and minerals around the gallery.

Session length 60 minutes. Max 40 pupils

Curriculum Links

KS2 Science: Materials and Their Properties

OUTREACH Travelling Toybox (EYFS, KS1)

Let us bring our Old Toybox session to your school. An experienced Museum Educator can come out to visit you in school and deliver this session in your classroom.

Curriculum Links

EYFS Knowledge & Understanding of the World, Communication, Language & Literacy

KS1 History: Historical Interpretation & Enquiry,
English: Speaking & Listening

Session Length 45 minutes. Max 30 pupils per class

