

Charnwood Community
SAFETY PARTNERSHIP



Charnwood Community Safety Partnership

Partnership Plan 2008 - 2011

Foreword by Charnwood Community Safety Partnership Chair

Charnwood Community Safety Partnership is helping to create a safer borough by promoting good citizenship and reducing crime, anti-social behaviour and disorder. We will identify and build on current best practice and seek opportunities to develop the promotion of safety and the reduction of crime within the community.

Our mission statement is:

‘to contribute to a high quality of life for all, across both urban and rural communities. To create an environment where people can feel secure and live without the threat or fear of crime and disorder’

The purpose of the plan is to make Charnwood a safer place in which to live and work. The effective implementation of the strategy, to which all partners are fully committed, will reduce the public’s fear of crime and reduce actual levels of recorded crime and disorder within the borough.

Our communities cannot be made safer without the involvement and commitment to the communities themselves. The partnership is also committed to improving how it works with and involves communities in identifying priorities and solutions and putting those solutions into place.

No single organisation can do this on its own, and in Charnwood we are pleased to have a wide range of organisations fully committed to delivering the mission statement and the work of Charnwood Community Safety Partnership.

We have identified priorities for this three year plan and will focus our energies on these priorities. The plan sets out our targets and format of our action plans. The Community Safety Partnership Delivery groups will commission interventions to address these priorities within the performance framework of the target.



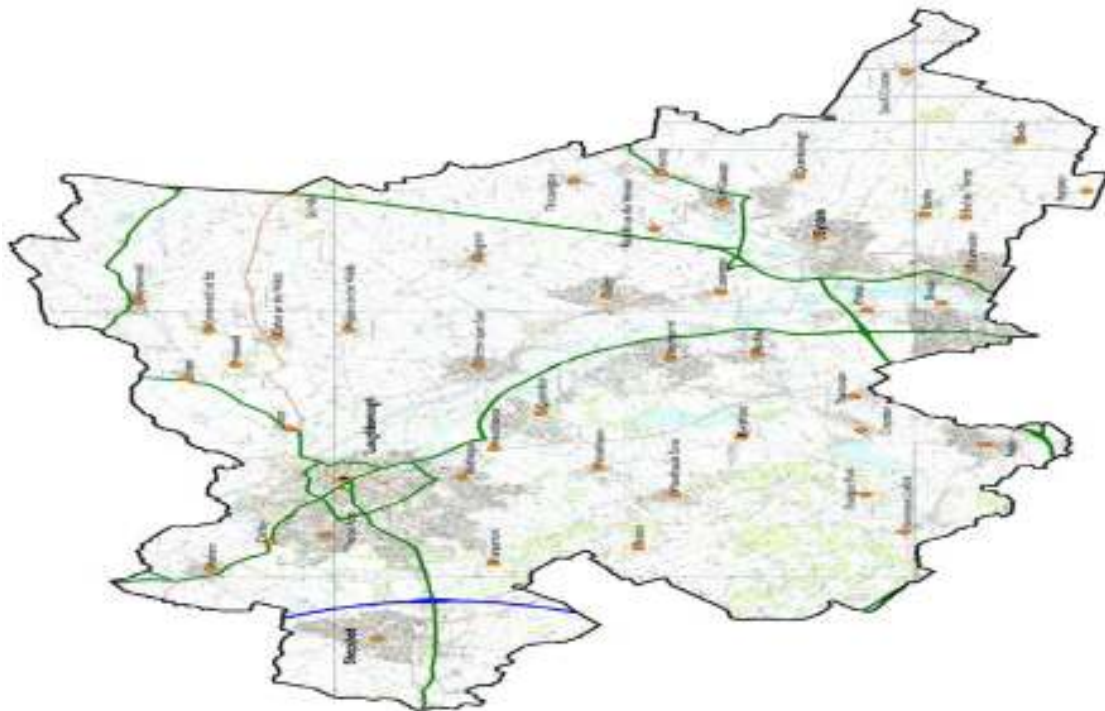
Cllr David Snartt
Lead Member for Community Safety
Chair of Charnwood Community Safety
Partnership

CONTENTS

FOREWORD BY CHARNWOOD COMMUNITY SAFETY PARTNERSHIP CHAIR	2
INTRODUCTION	4
STRATEGIC LINKS	5
LOCAL STRATEGIC DOCUMENTS	6
WORK WITH PARTNERS.....	6
NATIONAL PRIORITIES	8
LEICESTERSHIRE LOCAL AREA AGREEMENT (LAA) PRIORITIES	9
LOCAL PRIORITIES.....	10
TARGET SETTING.....	16
DELIVERY STRUCTURE AND PERFORMANCE MANAGEMENT	17
PERFORMANCE MANAGEMENT FRAMEWORK.....	19
COMMUNITY ENGAGEMENT	19
EQUALITIES	20
GLOSSARY	22
APPENDIX I	24

Introduction

The Borough of Charnwood is situated in the north of the county of Leicestershire. It is close to the cities of Nottingham and Derby to the north and Leicester to the south. The borough has a population of approximately 162,400 and the population density is relatively high at 557 persons per square kilometre compared to an average of 272 persons per square kilometre for the East Midlands. The area is classified as 'urban' by Natural England with approximately one third of the population living in the university town of Loughborough in the north of the borough. The remainder reside in the villages and towns of the Soar and Wreake valleys and the southern fringes of Leicester. The age profile of the borough indicates an even spread over the age ranges.



This Community Safety Plan outlines the main priorities for and directs the action of Charnwood Community Safety Partnership for the next three years (the Crime and Disorder Reduction Partnership for the Borough), with regard to crime, disorder and other aspects of safety for communities in order to improve the quality of life for all residents of the Borough

'to contribute to a high quality of life for all, across both urban and rural communities. To create an environment where people can feel secure and live without the threat or fear of crime and disorder.'

For each priority the Partnership has identified what we want to achieve, and how we will work to achieve this. Communities themselves may understand the issues that affect them the most, and have a major part to play in making themselves as a community safer. Recognising this, the priorities in this plan are based upon community priorities in the Borough, and this is a plan for communities as well as for local organisations.

To provide direction and following a review of the 1998 Crime and Disorder Act and legislative changes brought in by the Police and Justice Act 2006, the partnership has developed this 3 year Partnership Plan for 2008 to 2011. To assist in identifying priorities and producing the plan and as part of a countywide process, taking into account countywide LAA priorities, a Strategic Assessment has recently been undertaken. This included an analysis of the levels and patterns of crime and disorder, analysis of any changes and reflected the views from local communities on matters that needed to be prioritised.

This plan has been developed in line with legislative changes brought in by the Police and Justice Act 2006 and the Government's National Community Safety Plan & Cutting Crime Strategy. The partnership's plan and priorities will be revised annually to take account of successful work and changing communities, and the changing nature of local priorities. New and emerging trends can arise, a strategic assessment will be completed annually and priorities reviewed annually.

Strategic Links

Charnwood Community Safety Partnership is a sub-group of Charnwood Together, the local Strategic Partnership for the Borough. As such the Partnership is tasked with delivering on Crime and Disorder and Anti Social Behaviour Reduction and Reassuring Communities in support of the Charnwood Sustainable Community Strategy which sets the overall direction for improving the economic, social and environmental well being of Charnwood. Key to this is delivering improved performance in tackling Crime and Disorder and Anti Social Behaviour and reassuring the public through initiatives undertaken and the improvements achieved. The Charnwood Sustainable Community Strategy aligns with the Leicestershire Together Sustainable Communities Strategy and the Leicestershire Local Area Agreement.

Local Strategic Documents

The Charnwood Community Safety Partnership Plan is not a stand alone document but links to or incorporates other local strategic priorities these include:

Charnwood Together Sustainable Community Strategy

Leicestershire

County Community Safety Agreement

Policing Plan for Leicestershire

Leicestershire Together Sustainable Communities Strategy

Leicestershire DAAT Adult Drug Treatment Plan

Leicestershire DAAT Young Peoples Substance Misuse Treatment Plan

Leicestershire Fire and Rescue Service Safer Communities 2008-2011

Work with Partners

The partnership is made up of a number of agencies, some of which are required by law to work together to reduce crime, disorder, anti-social behaviour and drugs and alcohol misuse.

The agencies responsible for the work of the partnership are:

Charnwood Borough Council

Leicestershire Constabulary

Leicestershire County Council

Leicestershire County & Rutland Primary Care Trust

Leicestershire Fire Authority

Leicestershire Police Authority

Other agencies involved in the work of this partnership include:

Charnwood Neighbourhood Housing, Leicestershire & Rutland Probation Area, Leicestershire Drug & Alcohol Action Team (DAAT), Leicestershire Youth Offending Service (YOS), Loughborough Women's Aid, Loughborough Chamber of Trade and Commerce, CREC, Turning Point, Loughborough University and Voluntary Action Charnwood.

Each responsible agency within Charnwood Community Safety Partnership agrees to:

- Participate in the strategic development, performance management and delivery of the partnership's priorities and actions.
- Incorporate priorities and actions from the Community Safety Plan, as relevant, into their own plans, and therefore provide

appropriate mainstream resources to deliver these priorities and actions.

- Provide appropriate attendance to and involvement in the partnership's delivery structure to enable it to function effectively.
- Share data and information in accordance with the Information Sharing Protocol for the prevention of Crime and Disorder to the benefit of the communities within Charnwood.
- Ensure their duties to consider the impact of their actions on Community Safety under Section 17 of the Crime & Disorder Act 1998 are fulfilled by their organisation.
- Ensure the Partnership receives full support from their organisation.

Priorities

National Priorities

Public Service Agreements (PSAs) set out for the public and practitioners Government's delivery priorities and how government will measure success. The two key PSAs for 2008-11 for crime reduction and community safety are:

- PSA 23: Make communities safer
- PSA25: Reduce the harm caused by alcohol and drugs

These encapsulate the priorities laid out in the National Community Safety Plan 2008-2011 and set out how success will be measured.

PSA23: Make communities safer is broken down into four priority actions

- Reduce the most serious violence, including tackling serious sexual offences and domestic violence;
- Continue to make progress on serious acquisitive crime through a focus on the issues of greatest priority in each locality and the most harmful offenders – particularly drug-misusing offenders;
- Tackle the crime, disorder and anti-social behaviour issues of greatest importance in each locality, increasing public confidence in the local agencies involved in dealing with these issues;
- Reduce re-offending through the improved management of offenders.

PSA 25: Reduce the harm caused by alcohol and drugs sets out how Government will achieve long-term and sustainable reduction in the harms associated with alcohol and drugs. It provides a real focus for tackling some of the key drivers of crime.

The PSA has three main strands, underpinned by a new national alcohol strategy and a new national drug strategy 'Drugs: Protecting Families and Communities':

- Reducing the harms caused to the development, achievement and well-being of young people and families;
- Reducing the harms caused to the health and well-being of drug users and those using alcohol in harmful ways;
- Reducing the harms caused to the community as a result of associated crime, disorder and anti-social behaviour.

The strands will be delivered through:

- Public health campaigns and education to raise awareness of harms associated with substance misuse:

- Renewed effort to address substance misuse among young people, particularly through early intervention;
- A new focus on supporting the most at-risk families who are experiencing multiple problems;
- Helping people who use illegal drugs or drink harmfully to live healthier lives by providing information and advice and, for those who need it, treatment and support in re-establishing their lives;
- Tackling crime and the key drivers of offending, reducing the disorder and anti social behaviour associated with alcohol and drugs, tackling the supply of drugs and the irresponsible sale or promotion of alcohol;
- Giving local areas increased flexibility to plan and use resources.

Leicestershire Local Area Agreement (LAA) Priorities

Taken from a wide national indicator set (NI) the top priorities for improving life in Leicestershire as a whole are the focus of Leicestershire's second Local Area Agreement (LAA), which also covers 2008 to 2011.

The Safer Communities priorities and targets within the current draft of Leicestershire's LAA are:

Priority	Measure
The lives of offenders and those at risk of offending are improved so they are less likely to offend	NI 18 Adult re-offending rates for those under probation supervision (PSA 23) NI19 Rate of proven re-offending by young offenders (PSA 23)
The harm caused by drug and alcohol misuse is reduced in local communities	NI20 Assault with injury crime rate (PSA 25) NI 40 Drug user in effective treatment (PSA 25)
Disorder and anti-social behaviour is low compared to comparable areas and is being tackled effectively	NI24 Satisfaction with the way the police and local council dealt with Anti social behaviour (HO DSO PSA 23)
People feel (and are) safer from violence	NI20 Assault with injury crime rate (PSA 23)

Local Priorities

Based upon the Charnwood Strategic Assessment through data analysis, interpretation and priorities identified at the workshop and strategic meeting, the partnership has identified the following priorities:

- Anti Social Behaviour and Priority Neighbourhoods
- Violent Crime and the Night Time Economy
- Acquisitive Crime and Drugs Misuse

The priorities mentioned above are the three priorities that Charnwood CSP will concentrate on in this strategy. It is recognised that certain themes will cut across certain priorities such as community engagement, reassurance vulnerable people and prolific and priority offenders.

Priority 1 – Anti-Social Behaviour (ASB) and Priority Neighbourhoods

Why a priority?

Anti social behaviour is probably the single most negative issue for local communities, through the strategic assessment it has been identified that rowdy or inconsiderate behaviour makes up two thirds of the incidents of ASB reported to the police in 2006/07.
--

Criminal damage is a high volume crime compared to all other crimes and has associations with anti-social behaviour. The cost of criminal damage to Charnwood is second highest when compared with other crimes and the hotspots are located in our priority neighbourhoods. Criminal damage accounts for a third of the recorded British Crime Survey (BCS) offences within Charnwood during 2006/07, with approximately half of the criminal damage offences were recorded within Loughborough.

Aims

- | |
|--|
| <ul style="list-style-type: none">▪ To reassure communities that effective action is being taken against ASB in the Borough▪ Target partnership resources in the top five criminal damage to other property locations▪ Reduce levels of anti social behaviour in identified hotspots including arson▪ Target educational resources and programmes at young people identified as at risk of becoming offenders▪ To make realistic improvements to the quality of life for all people who live, work and visit the Borough▪ To undertake enforcement measures against the illegal supply of |
|--|

drugs and alcohol

How we will Measure Success

- NI24 and PSA 23 Satisfaction with the way the police and local council dealt with Anti social behaviour
- NI 21 Dealing with local concerns about anti-social behaviour and crime by the local council and police
- NI 17 and PSA 23 Perceptions of anti-social behaviour
- % of ABCs lead to no further actions
- % reduction of criminal damage to other property against baseline 549 crimes in 06/07

Priority 2 – Violent Crime and Night Time Economy

Why a priority?

Wounding and assaults accounts for 22.5% of all recorded crime in Charnwood, with over one-half of all violent offence in 2006/07 being recorded within Loughborough. Over one fifth of the Boroughs violent offences were recorded in a 1km area of Loughborough Town Centre. If this is broken down to street level one street in Loughborough has 40 reported violent offences, accounting for 5% of all violent crime recorded within Charnwood during the first six months of 2007/08.

Domestic abuse is a particularly prevalent and damaging crime which affects a wide range of individuals irrelevant of gender, age, ethnicity, class, religion, sexuality, geography and lifestyle. Through the Local Area Agreement agencies within Leicestershire have committed to two stretch reward targets, which end March 2009, for domestic abuse.

Aims

- Victims of Domestic Violence are protected from further offending
- People feel and are safer from violence
- Reduce levels of violent crime in identified hotspots
- To reduce alcohol related violence in town centre locations
- Reduce the fear of crime
- Increase confidence to report incidents of crimes against person

How we will Measure Success

- NI 32 and PSA 23 Repeat incidents of domestic violence
- NI 20 and PSA 25 Alcohol related violent crime is reduced
- Increase the reporting of Hate Incident/crime with the baseline set in 2006/07 of 200 crimes reported to the police

Priority 3 – Acquisitive Crime and Drugs Misuse

Why a priority?

Domestic Burglary is a priority because of its high impact on Charnwood's overall crime figures and it represents 11% of all recorded offences for 2006/07. In the strategic assessment it shows that 55% of the burglaries that took place were in Loughborough and five streets within Loughborough accounted for 8% of all recorded burglary in the first six months of 2006/2007.

Vehicle crime includes Theft from Motor Vehicle, Theft of Motor Vehicle and taken without consent and Vehicle Interference accounts for 22% of the recorded BCS offences in Charnwood. The data for vehicle crime has identified that 47% of the vehicle crime takes place in Loughborough and with a hotspot developing in the centre of Mountsorrel village.

Theft of Cycle makes up only 6% of our overall BCS record crime but with the growing student population and accommodation, this low level crime can be an early indicator for the more serious acquisitive crime such as burglaries and vehicle crime,

Drugs misuse is a priority because of the suffering it causes both to the victims and the community. Acquisitive crime is driven by this misuse. The number of problematic drug users accessing treatment in Leicestershire in 2006/07 was 1,322.

Aims

- Reduce levels of burglaries in identified hotspot locations
- To reassure communities that effective action is being taken against crimes against property
- Reduce the likelihood of being a victim of property crime within the Borough
- Provide support for victims of acquisitive crime
- To reduce the harm caused by substance and alcohol misuse on users, their families and the community
- To undertake enforcement measures against the illegal supply of drugs and alcohol
- Reduce re-offending through the improved management of offenders

How we will Measure Success

- NI 19 PSA 23 Rate of proven re-offending by young offenders NI 18 PSA 23 Adult re-offending is reduced
- NI 16 PSA 23 Serious acquisitive crime rate
- To reduce Cycle Theft against the baseline set in 2006/07 of 504 offences
- NI 40 PSA 25 Drug user in effective treatment

Priority 4 - Improving the Effectiveness of the Partnership

Charnwood Community Safety Partnership is committed to ensuring that the partnership is the most effective vehicle for securing improvements in the delivery of crime reduction in our community. However, challenges remain, particularly in how we can bring up the performance of our partnership to the levels achieved by the best. The key aspects of partnership working which underpin effective partnership are presented in the Hallmarks of Effective Partnership Working and by using this Charnwood Community Safety Partnership will rise to the challenges ahead and play their part in delivering greater reductions in crime.

Aims

- To use the six Hallmarks of Effective Partnership to improve level of performance (see appendix I)
- To develop and implement a Communication Strategy
- Establish a mechanism to ensure that Statutory partners are accountable to their community
- Create a CSP Community engagement strategy
- Integrate NIM into core business processes of Partnership activity
- Undertake an Equality Impact Assessment and then implement any related changes

How we will Measure Success

- Partnership meets the requirements of all six Hallmarks
- Established communication strategy and evidence of use at all levels of partnership
- Specific and auditable actions for each statutory partner
- Successful implementation of the strategy and increased visibility of CSP within the community
- Implementation of aspects of the National Intelligence Model (NIM) into the core business processes of Partnership activity
- Increased community engagement in the work of the Partnership
- NI 21 Dealing with local concerns about anti-social behaviour and crime by the local council and police

Priority 5 - Feeling Safe: Reducing the Fear of Crime and Reassuring the Community

Fear of crime and the lack of public reassurance can seriously affect quality of life and a Community Safety Partnership has a role to increase public reassurance. This fear of crime is often generated by people's day to day experience of anti-social behaviour and environmental problems such as litter, graffiti, abandoned vehicles and neglected buildings. The challenge for our CSP is to help local people to actually feel safe getting to grips with these problems.

Aims

- Address the fear of crime;
- To inform the Community that people who break the law will be caught and convicted
- To help residents feel safer in their own neighbourhoods
- To engage the press and public in the fight against crime
- To develop a network of local community groups who can solve local issues

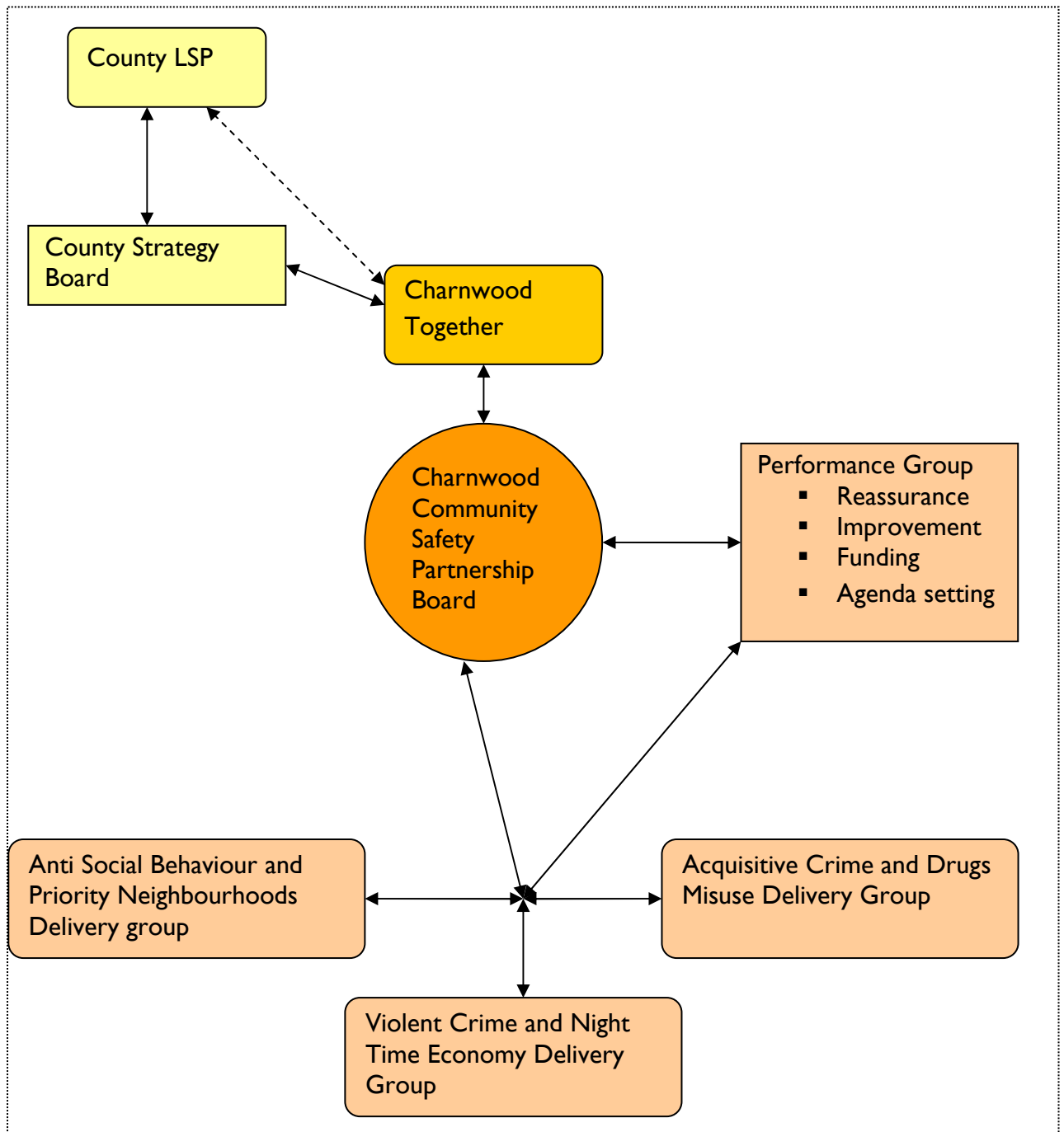
How we will Measure Success

Charnwood Community Safety Partnership carries out a Fear of Crime survey that measures the extent to which our communities feel safe on a biannual basis, which will be used to measure success.

Target Setting

At present there are no agreed targets within this plan, but these will be established once the Local Area Agreements targets are agreed. The plan will also take into account both national and local priorities, strategies and plans that link into the aims of the Partnership Plan.

Delivery Structure and Performance Management



In order to deliver effectively the partnership has established its delivery structure. The partnership board is the strategy group concerned with developing and monitoring progress against this plan, and reviewing the longer-term vision. The partnership board manages performance of the partnership across all levels to ensure resources are directed appropriately and effectively and will report back to Charnwood Together on progress against agreed targets. Projects to achieve our outcomes will be delivered through groups looking at each priority listed

above and task finish groups. Task and finish groups will be set up once a need is identified through local intelligence.

Each of the priorities contained in the 3 year plan are supported by Action Plans that detail initiatives, time scales, funding arrangements, lead body and measures of success. The action plans will be regularly monitored through an agreed performance management framework to ensure successful outcomes.

A lead person for each priority will coordinate performance through the action plans, review progress on a bimonthly basis and produce a report for the next CSP meeting.

Our five objectives to be used within in each action plan, **Prevention**, **Engagement**, **Reassurance**, **Enforcement** and **Intelligence** building on our last strategy, broadening the emphasis into the preventative and reassurance areas of community safety. These action plans will be in place by the end of May 2008.

The action plan format will be

Charnwood Community Safety Partnership Plan Action Plan 2008-2009					
PRIORITY					
List Aims					
Risk Assessment					
Objective: Prevention (as an example)					
Key Actions	Lead Agency	Time Scales	Financial and Resources implications	Outcome Target & Performance Measure	Progress

Charnwood Community Safety Partnership has agreed a performance framework to:

- Manage performance towards strategic priorities
- Monitor its own performance against its Family grouping using IQUANTA crime data
- Use the 'Hallmarks of Effective Partnerships' as part of its own performance regime

Performance Management Framework

- The partnership's board, which comprise of representatives from the responsible agencies and other relevant agencies, will be responsible for undertaking six monthly strategic reviews of progress against priorities and determine any support measures needed to ensure successful outcomes.
- The lead body for each theme will co-ordinate partnership activity through an agreed action plan, review progress on a bimonthly basis and report back to the partnership board.
- The Performance group will lead on developing the action plans for Improving the Effectiveness of the Partnership and Feeling Safe: Reducing the Fear of Crime and Reassuring the Community.
- The partnership chair will be responsible for maintaining an overview of activity in respect of all agreed priorities and address potential barriers to successful outcomes.
- The activities of the partnership will take a structured approach to problem solving by utilising the four stages of the SARA model and use the SMART principles in driving the key themes set within the plan.
- The partnership will use a standardised action plan template detailing the key objectives, initiatives, measures of success, time scales, lead partners, resources and associated risks.
- Aspects of the National Intelligence Model (NIM), will be used as a framework for partnership working.
- The partnership will develop and implement a communication strategy that promotes the work of the partnership.
- The partnership will establish and maintain a Risk Assessment Register that will detail the severity of the risks, the likelihood that the risk will happen, actions relating to the risks identified and which partner has responsibility for managing and monitoring the identified risk.
- The partnership will introduce community involvement in holding itself to account for performance against targets.
- The partnership's board will make available on a six monthly basis the latest position on performance against agreed priorities.

Community Engagement

Community engagement is the process of involving people in decisions that affect them. Engagement covers a range of activities: promoting and communicating about the work of the partnership, offering opportunities

for people to query actions and activities, reporting on progress and involving people in priority setting.

Charnwood CSP is committed to ensure the work of the partnership is informed by engagement with local communities. As a priority, Charnwood CSP will support and make active use of the available community engagement channels:

- Area Forums – 7 forums covering Charnwood meeting 2-3 times a year. Forum members consist of District and County Councillors and representatives from Parish Councils, alongside a range of community representatives. Forum meetings are open to the public and the public actively participates in the meetings.
- Area Forums are supported by Charnwood Borough Council and Leicestershire County Council, Leicestershire & Rutland Primary Care Trust and the Leicestershire Constabulary.
- The Fear of Crime Survey will be carried out on a biannual basis, using representatives from the Citizen Panel and other community groups and events via the services on Voluntary Action Charnwood.
- Partnership Action Weeks are multi agency weeks which take place around the borough. They involve many different partners who work together to tackle issues highlighted for that particular area. Each day always includes an opportunity for the public to meet and talk to officers from the police, fire, council and other partners.
- Legislation going through Parliament will allow for the development of Community Calls for Action. This will enhance the role of the ward councillor to raise matters of concern with the partnership and give a scrutiny role for councillors on the work of the CSP.
- The Partnership will also be required to undertake an annual “face the people” session where senior officers from the partnership will attend to take questions from the public. This will inform in the future the annual Strategic Assessment.

Equalities

Charnwood Community Safety Partnership is committed to serving all members of its communities effectively, and ensuring that all actions and plans consider implications for a variety of different groups and sections of the community.

It will work to ensure people are not excluded or disadvantaged because of their Race, Disability, Gender, Age, Religion and belief, or Sexual Orientation.

In order to develop a better understanding of its communities and ensure that any negative consequences for a particular group or section of the community are eliminated, minimised or counterbalanced by other measures the Partnership will use relevant information from its partners to produce an Equality Impact Assessment for this Community Safety Plan.

Glossary

ASB	Anti-Social Behaviour
ABC	Acceptable Behaviour Contracts
BCU	Basic Command Unit (Main police station for an area: North, South or Central Leicestershire)
BSC	British Crime Survey
CSP	Community Safety Partnership
CSPB	Community Safety Programme Board – The body that leads on and joins up community safety across Leicester, Leicestershire and Rutland
DAAT	Drug and Alcohol Action Team
DIP	Drugs Intervention Program
DV / DA	Domestic Violence / Domestic Abuse
LAA	Local Area Agreement
LPU	Local Policing Unit (Police station)
LSP	Local Strategic Partnership
MAPPOM	Multi-Agency Prolific & Priority Offender Management – Leicestershire’s programme for managing and reducing offending of PPOs
NI	National Indicator
NIM	National Intelligence Model
PCT	Primary Care Trust
PPO	Prolific & Priority Offenders – The small proportion of offenders who cause a disproportionately large amount of crime and disorder in local communities

SCS

Sustainable Communities Strategy (The strategy of the LSP to improve the quality of life for communities in the County or Borough)

APPENDIX I

The new statutory requirements form part of the Hallmarks of Effective Partnerships, which have been informed and influenced by our stakeholders. These represent the key aspects for partnerships working that underpin effective delivery through partnerships. Partnership can sue them to check their own effectiveness and to identify areas of improvement. The six Hallmarks for Effective Partnerships are:

- Empowered and Effective Leadership
- Visible and Constructive Accountability
- Intelligence-led Business Processes
- Effective and Responsive Delivery Structures
- Engaged Communities
- Appropriate Skills and Knowledge