



Centre Stage Would you like to become a new promoter?

Centre Stage's Touring Programme is distributed to voluntary group members twice a year - in April and October - giving details of shows and artists available, along with a whole range of information which helps promoters to choose tours most appropriate to their local venue and local audience. Groups select their shows, after which dates are allocated and a tour schedule produced, along with a seasonal leaflet like this one.

The performers allocated get in touch directly with promoters and arrange to send publicity - posters and flyers - for distribution locally. Promoters are responsible for printing and selling tickets, marketing the show, making sure that the venue is booked and hosting the event, which includes looking after the company or performers and ensuring an audience is attracted to the performance. Promoters have to contribute to the cost of the performance by selling tickets in order to meet the required fee shown in the Touring Programme.

Centre Stage is a subsidised rural and community touring scheme for Leicestershire and Rutland and is financially assisted by all the local authorities listed in the front of this leaflet and Arts Council East Midlands. Centre Stage is a Regularly Funded Organisation.

Local authority arts officers are involved in developing the scheme in their district and in distributing the Touring Programme and collecting the bids for shows. Artservice co-ordinates the scheme and, along with the arts officers, gives a range of support and advice to the local promoters, including information on marketing and promoting.

The Touring Programme is designed to give a wide choice of live professional performing arts to local communities so that people have the opportunity to see quality shows on their doorstep. It also has a wide appeal across a range of ages and interests and there is much for the family audience.

If you would like to know more about Centre Stage and becoming involved, call your local arts officer or Sue Roberts on 01544 327877.

We hope that you enjoy Centre Stage's Spring season. Thanks to all our local promoters for their hard work and enthusiasm in hosting shows in their local venue.

Disability Access and Venues

All venues have a commitment to access for disabled people. Many have full access & a range of facilities & others are working towards this goal. Please see back pages for access details supplied by venues.

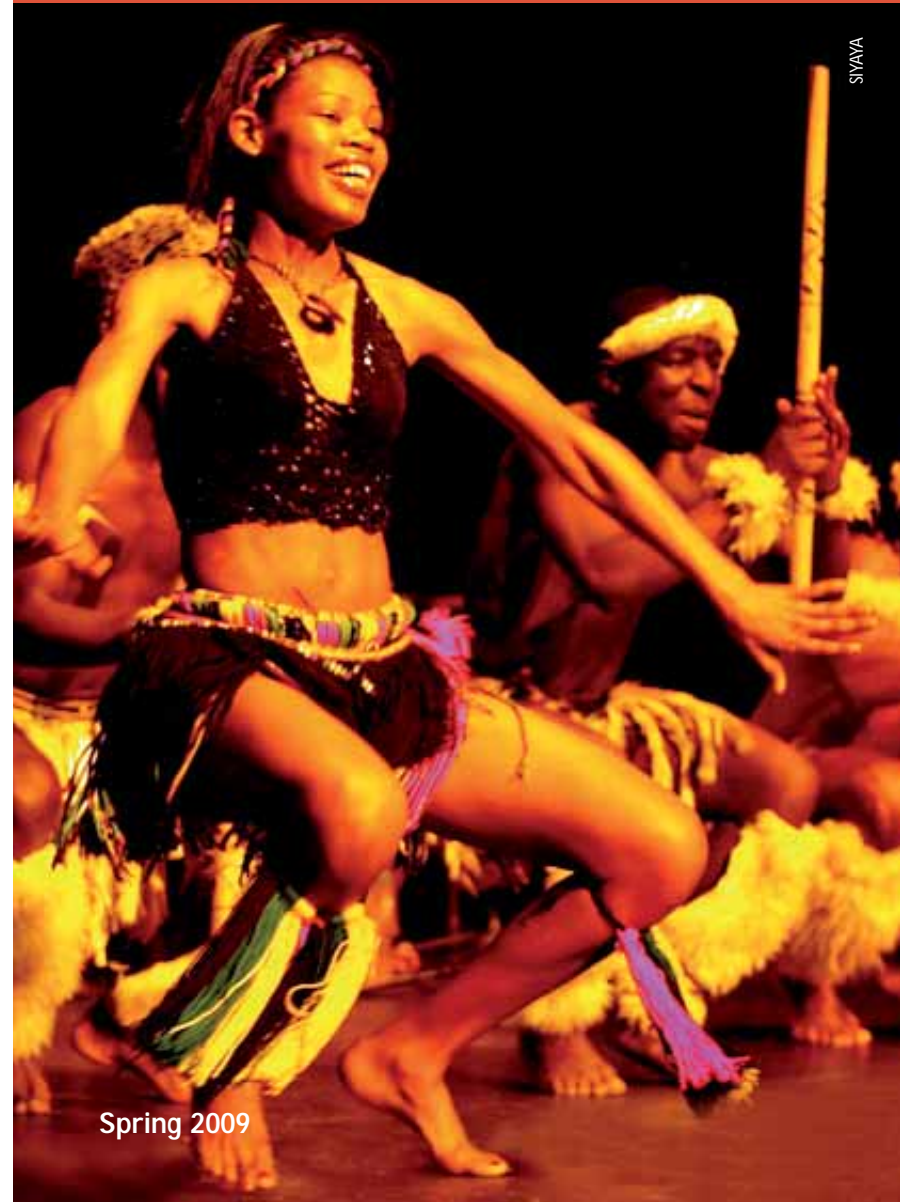
Co-ordinated by

artservice

Rural and Community Touring Scheme
for Leicestershire and Rutland
Spring 2009

Centre Stage

Live Performances In Your Area



SIVAYA

Spring 2009

ARTS4203 design by distraction: 01636 678067

Most of the shows are suitable for general family audiences; however, to make it easier for you to plan a great night out, look for the family friendly symbol and particularly the age recommendation.



For more information on the Scheme contact
Sue Roberts: **artservice** 01544 327877
or sue@artservice.org.uk



Centre Stage is the Rural and Community Touring Scheme for Leicestershire and Rutland bringing opportunities for professional live touring to village and community venues throughout the two counties.

Touring companies and performers with regional, national and international profiles who specialise in work for small spaces tour to venues across Leicestershire and Rutland offering a fantastic night out on your doorstep. These tours include a wide range of theatre, music, opera, dance, storytelling and poetry, children's theatre, puppetry and comedy theatre, with members of the local community hosting the event. When possible, and appropriate, allied participatory workshops are offered and these are placed in the local community.

All the shows listed are professional performances subsidised by your local District or Borough Council: Blaby, Charnwood, Harborough, Hinckley and Bosworth, Melton, North West Leicestershire, and the two County Councils of Leicestershire and Rutland.

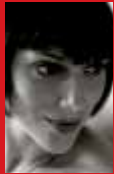
Tickets are sold locally for each event by the village or community promoters. Check with each venue for ticket prices.

The scheme is co-ordinated by Artservice on behalf of The Leicestershire and Rutland Arts Development Officers' Forum.

Supported by:



This programme is financially supported by Arts Council England East Midlands.



March



LONDON MOZART PLAYERS WIND ENSEMBLE IN CONCERT

Featuring principal musicians on oboe, bassoon and clarinet

Nationally and internationally acclaimed London Mozart Players return to Leicestershire this spring to delight our Centre Stage audiences.

The London Mozart Players is the UK's longest-established chamber orchestra and one of the finest in Europe. Bringing together outstanding musicians from the UK and abroad to perform music of the highest quality, the LMP is internationally renowned for its live performances and CD recordings, and is particularly known for its definitive performances of the core Classical repertoire.

The Wind Ensemble not only performs a delightful programme of music but the musicians will chat to the audience during the concert, introducing themselves and the music, making for a friendly, informal yet stunningly memorable evening.

Works will include: Beethoven's Variations on Mozart's La ci darem di mano; Britten's Six Metamorphoses after Ovid; Poulenc's Romance for clarinet and bassoon; Mozart's Divertimento in No. 1.

"Musicians were wonderful, the music was sublime. The audience was delighted." **Countesthorpe Village Hall, Leicestershire**

This will be a very special evening of music. For all the family.

Tue 3 Mar	Hungarton Village Hall LE7 9JH 0116 259 5669	7:30pm
Wed 4 Mar	Barlestone C of E School Community Hall CV13 0EP 01455 291577	7:30pm
Fri 6 Mar	Burton-on-the-Wolds Village Hall LE12 5AG 01509 881369	7:30pm
Sat 7 Mar	Quorn, St Bartholomew's Church LE12 8DP 01509 414287	7:30pm

Family Show



March and May



THE LEGENDARY ROBIN WILLIAMSON AN EVENING OF SONGS AND STORIES

Robin Williamson has been a pioneering and defining force in acoustic music world wide for over 40 years and has played just about everywhere! An accomplished multi-instrumentalist with a long term passion for myth, legend and the spoken word, Robin presents an evening with a magical mix of ballads and tales, woven through with the emotive strains of the Celtic harp, guitar, fiddle, border pipes and flute.

As early as the winter of 1960, Robin was invited to play London's legendary Troubadour - two years before Bob Dylan's famous appearance in 1962! Founder in the 1960s of the influential *Incredible String Band* and the *Merry Band* of the 1970s, Robin has been a key figure at the forefront of the storytelling revival in Europe and America since the 80s.

One of the tracks from Robin's new CD, 'The Iron Stone' is to be used as the title music for a forthcoming major French film, *L'Heure d'Été* starring Juliette Binoche plus his song at Woodstock is about to be included in a box set by Warner Bros films.

His wit, charm and distinctive interpretations of traditional stories will engage newcomers and established listeners alike. Come prepared to listen to a consummate musician and storyteller: it promises to be an enthralling evening!

- | | | |
|------------|--------------------------------------|--------|
| Fri 6 Mar | Plungar Village Hall NG13 0JE | 8:00pm |
| | 01949 860257 | |
| Fri 1 May | Long Clawson Village Hall LE14 4NA | 7:30pm |
| | 01664 822247 | |
| Thu 14 May | Burbage Constitutional Club LE10 2DE | 8:00pm |
| | 01455 251710 | |
| Fri 15 May | Countesthorpe Village Hall LE8 5TB | 7:30pm |
| | 0116 277 6259 | |
| Sat 16 May | Twyford Village Hall LE14 2HU | 7:30pm |
| | 01664 840352 | |



14+

March



ROBIN AND BINA WILLIAMSON SONGS, STORIES AND MUSIC FOR THE SPRING

After life with *The Incredible String Band* and many other projects, Robin and Bina have put together a performance which is completely unique.

Touring and recording since the 1990s, their songs and music delight with a changing collage of traditional and original pieces with harp, fiddle, flute, percussion and other instruments and featuring the evocative East-West harmonies of their voices in a style described recently as *Indo-Celtic-Delta!*

Their concerts are seasonal celebrations of the turning year embracing legend, original material and folk music from many roots (including English, Celtic, Indian and Old Timey American) to create a wonderful blend, powerfully conveying a sense of the enchantment and wonder of life.

This is real music, magical, simple, funky and true. It makes people feel good - people of all cultures and all ages. It's full of soul and highly entertaining.

For all the family!

- | | | |
|-----------|------------------------------|--------|
| Sat 7 Mar | Thringstone Community Centre | 7:30pm |
| | LE67 8NR | |
| | 01530 222337 | |



ALL
AGES

March



SIYAYA ARTS - MANY MUSICS, MANY DANCES, ONE PEOPLE ONKEOSE

Unforgettable Siyaya - all the way from Zimbabwe - presents a spectacular evening of dance, song and music.

The audience is set alight by stunning traditional and Township song and dance from the heart of Bulawayo, celebrating the greatest African instrument - the human voice.

Live on stage, the male and female singers, dancers, musicians and actors are exciting and uplifting. *"As temperature-raisers they are nothing short of spectacular"*.

Siyaya is one of Zimbabwe's great music and dance treasures and has gained international recognition by their live performances and recordings. People have asked if Siyaya are musicians, a dance group or a theatre company. Siyaya encompasses all of these celebrations and is simply not to be missed!

"Would love to have Siyaya again.....we will treasure the memory of a very special performance".

Hoby & District Village Hall, Leicestershire

- | | | |
|------------|--|--------|
| Tue 17 Mar | Countesthorpe, St Andrew's Church
LE8 5QX
0116 277 6259 | 7:30pm |
| Wed 18 Mar | Oakham, Vale of Catmose College
LE15 6NU
01572 725904/722286 | 7:30pm |
| Thu 19 Mar | Waltham-on-the-Wolds Village Hall
LE14 4AG
01664 464082 | 7:30pm |
| Sun 22 Mar | South Luffenham Village Hall
LE15 8NW
01780 720687 | 7:30pm |



ALL
AGES

March



SECKOU KEITA QUINTET SKQ IN CONCERT

The inimitable Seckou Keita - virtuoso Kora player from Senegal - returns with a new show and an amazing 5piece line-up.

The Seckou Keita Quintet SKQ is one of the fastest growing, independent bands of the day, captivating audiences from Montreal to Manchester, Sweden to Senegal. Their new album, *The Sillimbo Passage*, creates a fresh sound and shifts SKQ into a music category all of its own which is already garnering international attention.

Hailing from Senegal, Italy, Egypt and The Gambia, this multi-national band is an exciting fusion of culture and experience. Counting Richard Bona, Bela Fleck and Bobby McFerrin amongst his influences, Seckou Keita leads the band with his own inimitable, Kora playing (a West African stringed instrument likened to the harp or lute).

Seckou's charismatic personality is portrayed through his unique improvisational playing; he has been referred to as "The Hendrix of the Kora". He is supported by world-class artists with the double bass/electric bass of Davide Mantovani, the eclectic percussions of Surahata Susso, the distinguished sound of the violin by Samy Bishai and enchanting voice of the gracious Binta Susso - the newest addition to the band.

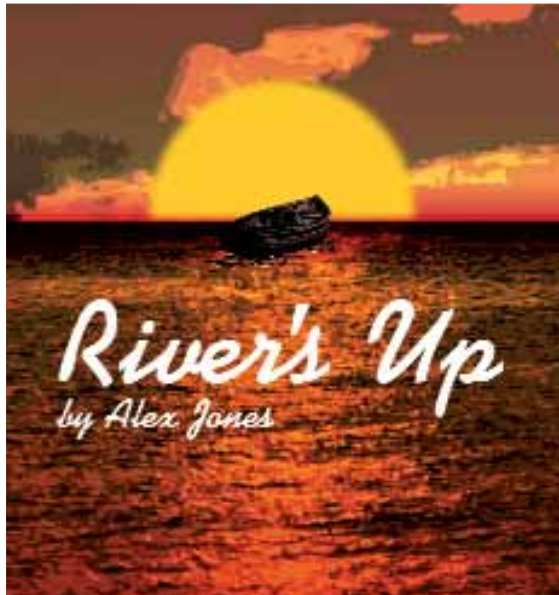
The Seckou Keita SKQ possesses a unique ability to touch everyone who experiences their sound, making it easy to see how they are amassing fans worldwide with their captivating, contemporary music. Be there!

- | | | |
|------------|--|--------|
| Wed 25 Mar | Hoby & District Village Hall
LE14 3DT
01664 434120 | 7:30pm |
| Thu 26 Mar | Appleby Magna,
Sir John Moore Foundation DE12 7AH
01530 273629 | 7:30pm |
| Fri 27 Mar | Ashby de la Zouch,
The Venture Theatre LE65 1HU
01530 411767 | 7:30pm |



ALL
AGES

March



OXFORDSHIRE TOURING THEATRE COMPANY (OTTC)
RIVER'S UP, BY ALEX JONES

Firm favourites OTTC brings a new play for the spring - *River's Up*, by Alex Jones.

When the river's up and the chips are down do you drift apart or pull together? With their house about to be flooded - again! - Sally and Tom are in deep water. Before long, they're adrift in an open boat with little more than a bottle of water and a tin of beans and whichever way you look at it, it's sink or swim.

Join them on their sometimes funny, sometimes poignant journey in this domestic tragicomedy of epic proportions.

Many of you will remember this company from previous great tours including *Under Milk Wood* and *The Fats Waller Show* both of which astounded and thrilled audiences.

"Excellent production. Hope to see another".
Enderby Civic Centre

Thu 26 Mar Ashby Magna Village Hall LE17 5NQ 7:30pm
01455 202599
Fri 27 Mar Barrow-upon-Soar, Humphrey Perkins Community Centre LE12 8JU
7:30pm
07718 153117



March and April



BAGHDADDIES
IN CONCERT - KLEZMER, BALKAN, MIDDLE EASTERN

The brilliant Baghdaddies pump out an eclectic fusion of high-energy rhythms and melodies plucked from around the world - all guaranteed to raise your spirits!

Inspired by the Roma wedding and brass band music of the Balkans, the Baghdaddies play Balkan gypsy with Middle Eastern flavours, shades of Klezmer and tango, jazz and reggae, some calypso plus a touch of ska - all laced with funky dance grooves and blistering eastern brass harmonies.

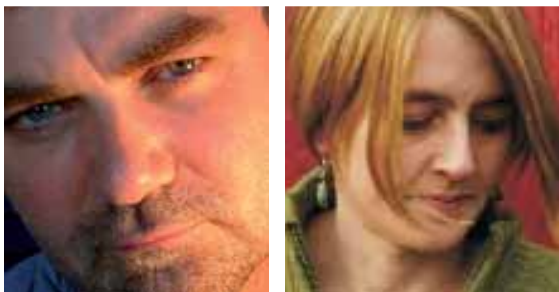
Village hall favourites, the Baghdaddies perform extensively both on a national and international level. They are equally at home playing on stage or street, village venue or festival and always receive a warm if not frenzied reaction from their audience. They have released four acclaimed albums of mainly original material in their own unique style

A lively, humorous and animated performance guaranteed for all the family!

Sun 29 Mar Fleckney Village Hall LE8 8AS 7:30pm
0116 240 2993
Thu 2 Apr Queniborough Village Hall LE7 3DH 7:30pm
0116 269 7431
Fri 3 Apr Quorn Village Hall LE12 8BB 7:30pm
01509 414287
Sat 4 Apr Kirby Bellars Village Hall LE14 2EA 7:30pm
01664 813938
Sun 5 Apr Greetham Community Centre 7:30pm
LE15 7NG
01572 812804
Thu 23 Apr Ryhall Village Hall PE9 4HR 7:30pm
01780 754621



April



CHRIS WOOD AND KARINE POLWART FROM THE FLOOR

Song writing with a conscience. This is what Chris Wood and Karine Polwart specialise in. Their singing together is a rare event, the closeness of their voices is startling and for only a few days in April, especially for Centre Stage, Chris and Karine will combine their enthusiasm for meaningful song in a small but perfectly formed show.

There's a genuine authenticity in both these songwriters; their songs are both enchanting and provocative. Both musicians write and produce music which has a sincerity seldom encountered these days. Their songs make connections and engage.

Chris and Karine first met and performed together at the Barbican in 2007 as part of the Folk Britannia series for BBC TV. Chris played Glastonbury this year while Karine has recently played London's Round House and both appeared at the Cambridge Folk Festival in August 2008.

Chris and Karine arrive hotfoot from a weeklong song-writing residency for The Darwin Song Project in association with Shrewsbury Festival and The British Library, so there is every chance some new songs, hot off the press, might find their way into the gig. You heard it here first!

Expect a rare evening of traditional and new music from two of the UK's most exciting and sought after musicians.

Both Chris and Karine have been nominated for the prestigious BBC Radio 2 Folk Awards to be announced in the New Year.

Wed 1 Apr	Long Clawson Village Hall LE14 4NA	7:30pm
	01664 822247	
Thu 2 Apr	Waltham-on-the-Wolds Village Hall	7:30pm
	LE14 4AG	
	01664 464082	
Fri 3 Apr	Manton Village Hall LE15 8SU	8:00pm
	01572 737503	



12+

April



ROGUE THEATRE PATHWAY TO THE RED SUN

Expect poetry, spectacle, live music, dance, acrobatics and powerful narrative in this tale of innocence betrayed. This fourth and most daring production by Rogue Theatre creates a unique and richly imagined epic.

Pathway to The Red Sun is a symbolic journey set in a futuristic apocalyptic landscape. The story of love unfolds in the dreams of a soldier and the heart of a woman as they search for innocence and confront their destiny both in reality and in their dreams.

With circus spectacle, an astonishing visual style and moments of high pathos, Rogue Theatre brings a filmic quality to the stage, which is deeply moving and highly engaging. With inspiration from *Madame Butterfly*, films like *Blade Runner*, storytelling influences from Quentin Tarrantino, Kabuki Theatre, myth and legend, this production draws on the Director's first hand experience of Japan.

With poetry and text by Anna Maria Murphy (BBC 4, *Madame Lucinda's Wonder Show*, Kneehigh, National Theatre) and an emotive score played live mixing classical music with heart pounding rhythm and driving bass. Expect a thrilling experience!

Fri 3 Apr	Oakham, Vale of Catmose College	7:30pm
	LE15 6NU	
	01572 725904/722286	
Sat 4 Apr	Appleby Magna,	7:30pm
	Sir John Moore Foundation DE12 7AH	
	01530 273629	



10+

April and May



RATATAT THEATRE COMPANY
APRIL IN PARIS, BY JOHN GODBER

Ratatat - definitely one of your favourite companies - returns for a third year with another hilarious John Godber comedy.

Bet (played by Stephanie Preacher) and Al (played by Dominic Goodwin) lead a quiet life in their small Yorkshire home until Bet wins a "Romantic Breaks" competition in a

magazine. The prize, a holiday for two in Paris, represents their first experience abroad and has profound effects on the way they look at the world around them once they return home.

They sort out French cuisine, wrestle with their phrase book and fend off would-be muggers on the Metro in this hilarious depiction of the English abroad. You'll love it!

From the company which brought you *September in the Rain* (2007) and *Happy Jack* (2008). Not to be missed!

"The audience was spellbound and everyone I met in the village afterwards commented on how much they enjoyed the show".

Happy Jack at Ashby Magna Village Hall

Tue 14 Apr	Glenfield Memorial Hall LE3 8DL	7:30pm
	0116 287 1997	
Wed 15 Apr	South Luffenham Village Hall LE15 8NW	7:30pm
	01780 720687	
Thu 16 Apr	Seagrave War Memorial Hall LE12 7LU	7:30pm
	0845 691 8923	
Fri 17 Apr	Enderby Civic Centre LE19 4NT	7:30pm
	0116 275 3711	
Sat 18 Apr	Ashby Magna Village Hall LE17 5NQ	7:30pm
	01455 202599	
Sun 19 Apr	Ibstock, The Palace Community Centre LE67 6LG	7:00pm
	01530 267303	
Thu 30 Apr	Queniborough Village Hall LE7 3DH	7:30pm
	0116 269 7431	
Thu 14 May	Barlestone C of E School Community Hall CV13 0EP	7:30pm
	01455 291577	
Sat 16 May	Bottesford Victory Commemoration Hall NG13 0BG	7:30pm
	01949 843402	
Sun 17 May	Redmile, St Peter's Church NG13 0GA	7:30pm
	01949 843789	



12+

April and May



MERVYN STUTTER
PRESENTS
AN EVENING WITH
MERVYN STUTTER

Mervyn Stutter is a very popular fellow, a national treasure, even! He's much in demand this spring and we know audiences are going to have a great evening with him.

Mervyn Stutter is an actor, comedian, scriptwriter, satirical songwriter, founder member of *The Flying Pickets* and has worked widely in theatre, comedy, cabaret, Radio and TV.

The Sixties Generation is a huge social group that refuses to grow old gracefully and so, in 2004, Mervyn wrote and starred in a comedy series for Radio 4, called *Getting Nowhere Fast* the story of Merv, a menopausal flower child in the 21st Century.

Mervyn is an unashamed Baby Boomer and his sometimes wicked but always affectionate sense of humour brings warmth and joy to an audience that is happy to laugh both at his life and their own.

"This act should have a Health Warning - I wasn't the only one crying with laughter and I thought my head was going to split at one point. Mervyn picked the audience up right from the start and held them all the way through".

Plungar Village Hall, Leicestershire

Fri 17 Apr	Hoby & District Village Hall LE14 3DT	7:30pm
	01664 434120	
Sat 18 Apr	Wymondham Village Hall LE14 2AB	8:00pm
	01572 787247 / 07792 756511	
Sun 19 Apr	Barlestone St Giles Football Club CV13 0EP	7:30pm
	01455 291577	
Thu 30 Apr	Peatling Magna Village Hall LE8 5UQ	7:30pm
	0116 247 8933 / 8510	
Fri 1 May	South Kilworth Village Hall LE17 6DS	7:30pm
	01858 575520	
Fri 8 May	Old Dalby Village Hall LE14 3LR	8:00pm
	01664 822603 / 823391	
Sat 9 May	Scaford Village Hall LE14 4DZ	7:30pm
	01664 444639	
Fri 15 May	Kirby Bellars Village Hall LE14 2EA	7:30pm
	01664 813938	



12+

April and May



HELEN BARRETT

THE LADY LOVES JAZZ - SONGS WITH PIANO ACCOMPANIMENT

The Lady Loves Jazz, a one-woman jazz music show, is a wonderful celebration of traditional and contemporary jazz songs that will ignite the spirit and warm the soul. Brought together by the stunning and charismatic vocals of Helen Barrett, this musical performance will leave you humming happily all the way home.

Helen has been singing for as long as she can remember and it still brings her complete and utter joy. Professionally, Helen has been entertaining audiences for ten years and was one of the first graduates of Paul McCartney's Performing Arts School, LIPA, in Liverpool.

She will present the music in a friendly and informal way with jazz pianist Adam Biggs.

So, if you enjoy the music of Ella Fitzgerald, Nina Simone, Peggy Lee, Norah Jones and Eva Cassidy, you'll love this show.

Fri 17 Apr	Countesthorpe Village Hall LE8 5TB	7:30pm
	0116 277 6259	
Fri 1 May	Plungar Village Hall NG13 0JE	8:00pm
	01949 860257	
Sat 2 May	Morcott Village Hall LE15 9DX	7:30pm
	01572 747515	
Sun 3 May	Burton Overy Village Hall LE8 9EW	7:45pm
	0116 259 3576	
Thu 7 May	Quorn Village Hall LE12 8BB	7:30pm
	01509 414287	
Fri 8 May	Wymeswold Memorial Hall LE12 6TY	8:00pm
	01509 880277	
Sat 9 May	Stathern War Memorial Institute	7:30pm
	LE14 4HW	
	01949 860602	



10+

April and May



REG MEUROSS AND JACKIE OATES

SONGROADS

This will be a very special evening in the company of Reg Meuross and Jackie Oates, two exceptional musicians. You will be treated to a blend of two 'celestial' voices and the music of guitar, banjo, dulcimer, fiddle and lap harmonium.

Reg and Jackie will be playing songs from Reg's brand new album *Dragonfly* currently receiving rave reviews; primarily a collection of story songs written by Reg from tales, both traditional and contemporary, collected on his last three years of rural touring, as well as more traditional story songs rendered in Jackie's exceptionally clear and beautiful voice. They will also be playing songs featured on Jackie's latest release *The Violet Hour*, the Phil Beer produced collection of traditional and original folk songs.

This is a fantastic opportunity to see (and hear!) one of Britain's most respected singer/songwriters and the brilliant new rising star of the British folk scene together in the comfortable and intimate setting of your very own village hall.

Thu 23 Apr	Ilston Village Hall LE7 9EG	7:30pm
	0116 259 6925 / 6713	
Fri 24 Apr	Wymeswold Memorial Hall LE12 6TY	8:00pm
	01509 880277	
Sat 25 Apr	Claybrooke Magna Village Hall	7:30pm
	LE17 5AJ	
	01455 209336	
Sun 26 Apr	Burton Lazars Village Hall LE14 2UR	7:30pm
	01664 567752	
Wed 6 May	Hugglescote,	7:30pm
	St John The Baptist Church LE67 2BQ	
	01530 456160	



ALL AGES

May



LEMPEN PUPPET THEATRE COMPANY

THE AM-A-ZING THING

Lovely Lempen Puppet Theatre presents a brand new show for little people and their families!

Peter Grimm is a descendant of the famous Brothers Grimm. He has inherited the tradition of his ancestors and tells the Grimm's stories as they have been written down 200 years ago. But, with his inheritance also comes a ghost. The brothers locked something away in a box when they wrote the stories. They threw the box into the sea and now, that rogue and wild element of story, has returned with the tide.

Storyteller Peter opens the box and sets free *The am-A-zing Thing* that takes him on an unusual journey that weaves its way through a medley of well known Brothers Grimm Tales, to finally unlock and free all traditional stories.

*"As I was walking down the beach one bright and sunny day,
I saw a great big wooden box a-floating on the bay.
I pulled it in and opened up, and there to my surprise,
I discovered a...?.....?..., right before my eyes!"*

What's in the box? A strange and weird thing? Something terrible or a thing of beauty? A truly original story told with puppets (glove and table-top), acting and live music.

Fri 1 May	Anstey, Jubilee Hall LE7 7AY	6:30pm
	0116 236 2646	
Sat 2 May	Ilstock, The Palace Community Centre	11:00am
	LE67 6LG	
	01530 267303	
Sun 3 May	Appleby Magna, Sir John Moore Foundation DE12 7AH	4:00pm
	01530 273629	



5+

and their families

May



THIRD PARTY PRODUCTIONS

THE TRAGICAL HISTORY OF DR FAUSTUS - A DAMNED FINE PLAY!

Wonderful Third Party make their debut onto the Centre Stage scheme with a fast, funny three-hander - all in the words of Christopher Marlowe, but not necessarily in the right order! This play is back on tour, by popular demand.

The Tragical History of Dr Faustus is a play by Christopher Marlowe based on the Faust story, in which a man sells his soul to the devil for power and knowledge. Dr Faustus was first published in 1604, eleven years after Marlowe's death.

This highly entertaining version of the play is fast moving, full of surprises, shot through with effective plot-moving popular forms: dance and song, live music (the dulcet tones of the ukulele), even a touch of ventriloquism as Faustus is mocked by his own image parodying his speech to Helen of Troy while blues-singing Lucifer riffs on the soul of a man!

Some of the most popular dramatic verse ever written and some splendid comedy to go with it plus smoke, mirrors and cheap tricks - damned good stuff! Not to be missed!

Thu 7 May	Market Bosworth, Dixie Grammar School CV13 2LE	7:30pm
	01455 291303	
Fri 8 May	Ashby de la Zouch, The Venture Theatre LE65 1HU	8:00pm
	01530 411767	



12+

May



UMDUMO WESIZWE

QO

Umdumo Wesizwe are 10 young men singing songs of love, hope, worship, courtship, hardship and African social commentary who will mesmerise you with their harmonies and beautifully choreographed dance routines.

Umdumo Wesizwe (meaning Sound of the Nation) hails from Zimbabwe's townships and was established in 1994. The traditional music sung by Umdumo Wesizwe is called 'isichathamiya' (is-cot-a-me-ya), also known as 'imbube'.

The music was born in the mines of Southern Africa. Black workers were taken by rail to work far away from their homes and their families. Poorly housed and paid worse, they would entertain themselves after a six-day week by singing songs into the small hours every Sunday morning; this began a fierce but social competition held regularly and was the highlight of everyone's social calendar. The winners were awarded a goat for their efforts and, of course, the adoration of their fans. *Imbube* has been made popular in the west by Ladysmith Black Mambazo, Zimbabwe's Black Umfolosi and the Austrian based trio Insingizi.

Over the years they have created their own style of singing, called 'igusheshe'. This is *imbube* music laced with other music styles such as RnB, jazz, Kwaito, Afro Pop and Reggae.

Don't miss this rare opportunity to see and hear them in your village hall or community venue!

Tue 26 May	Waltham on the Wolds Village Hall LE14 4AG 01664 464082	7:30pm
Wed 27 May	Appleby Magna, Sir John Moore Foundation DE12 7AH 01530 273629	7:30pm
Thu 28 May	Hoby & District Village Hall LE14 3DT 01664 434120	7:30pm



If you have enjoyed a Centre Stage performance why not visit your local independent theatre:

Peepul Centre, Orchardson Avenue, Leicester
Box Office: 0845 310 3344 Visit: www.peepulcentre.com

Curve, Leicester www.curveonline.co.uk

Concordia Theatre, Stockwell Head, Hinckley
Tel: 01455 615 005 Visit: www.concordiatheatre.co.uk

Harborough Theatre, Church Square, Market Harborough
Visit: www.harboroughtheatre.com

Melton Theatre, Asfordby Road, Melton Mowbray
Box Office: 01664 85111 Visit: www.meltontheatre.co.uk

Loughborough Town Hall, Market Place, Loughborough
Box Office: 01509 231914 Visit: www.loughboroughtownhall.co.uk

If you are interested in putting on similar events in your community then your local contact is:

Leicestershire County Council - Emily Horwood

Tel: 0116 267 0015
Email: ehorwood@leics.gov.uk

Blaby District Council - Sallie Wocha

Tel: 0116 272 7617
Email: slw@blaby.gov.uk

Charnwood Borough Council - Simone Maclaine

Tel: 01509 268903
Email: simone.maclaine@charnwood.gov.uk

Harborough District Council - Sophy Sylvester

Tel: 01858 821291
Email: s.sylvester@harborough.gov.uk

Hinckley & Bosworth Borough Council - Lindsay Orton

Tel: 01455 255 833
Email: lindsay.orton@hinckley-bosworth.gov.uk

Melton Borough Council - Sam Berry

Tel: 01664 502377
Email: sberry@melton.gov.uk

North West Leicestershire District Council - Julia Harley

Tel: 01530 454604
Email: julia.harley@nwleicestershire.gov.uk

Rutland County Council - Kellie-Ann Seale

Tel: 01572 720922
Email: kseale@rutland.gov.uk

LONDON MOZART PLAYERS WIND ENSEMBLE - IN CONCERT

Tue 3 Mar	Hungarton Village Hall LE7 9JH	0116 259 5669	7:30pm
Wed 4 Mar	Barlestone C of E School Community Hall CV13 OEP	01455 291577	7:30pm
Fri 6 Mar	Burton-on-the-Wolds Village Hall LE12 5AG	01509 881369	7:30pm
Sat 7 Mar	Quorn, St Bartholomew's Church LE12 8DP	01509 414287	7:30pm

THE LEGENDARY ROBIN WILLIAMSON - AN EVENING OF SONGS AND STORIES

Fri 6 Mar	Plungar Village Hall NG13 0JE	01949 860257	8:00pm
Fri 1 May	Long Clawson Village Hall LE14 4NA	01664 822247	7:30pm
Thu 14 May	Burbage Constitutional Club LE10 2DE	01455 251710	8:00pm
Fri 15 May	Countesthorpe Village Hall LE8 5TB	0116 277 6259	7:30pm
Sat 16 May	Twyford Village Hall LE14 2HU	01664 840352	7:30pm

ROBIN AND BINA WILLIAMSON - SONGS, STORIES AND MUSIC FOR THE SPRING

Sat 7 Mar	Thringstone Community Centre LE67 8NR	01530 222337	7:30pm
-----------	---------------------------------------	--------------	--------

SIYAYA ARTS - MANY MUSICS, MANY DANCES, ONE PEOPLE - ONKEOSE

Tue 17 Mar	Countesthorpe, St Andrew's Church LE8 5QX	0116 277 6259	7:30pm
Wed 18 Mar	Oakham, Vale of Catmose College LE15 6NU	01572 725904/722286	7:30pm
Thu 19 Mar	Waltham-on-the-Wolds Village Hall LE14 4AG	01664 464082	7:30pm
Sun 22 Mar	South Luffenham Village Hall LE15 8NW	01780 720687	7:30pm

SECKOU KEITA QUINTET - IN CONCERT

Wed 25 Mar	Hoby & District Village Hall LE14 3DT	01664 434120	7:30pm
Thu 26 Mar	Appleby Magna, Sir John Moore Foundation DE12 7AH	01530 273629	7:30pm
Fri 27 Mar	Ashby de la Zouch, The Venture Theatre LE65 1HU	01530 411767	7:30pm

OXFORDSHIRE TOURING THEATRE COMPANY (OTC) - RIVER'S UP, BY ALEX JONES

Thu 26 Mar	Ashby Magna Village Hall LE17 5NQ	01455 202599	7:30pm
Fri 27 Mar	Barrow-upon-Soar, Humphrey Perkins Community Centre LE12 8JU	07718 153117	7:30pm

BAGHDADDIES - IN CONCERT - KLEZMER, BALKAN, MIDDLE EASTERN

Sun 29 Mar	Fleckney Village Hall LE8 8AS	0116 240 2993	7:30pm
Thu 2 Apr	Queniborough Village Hall LE7 3DH	0116 269 7431	7:30pm
Fri 3 Apr	Quorn Village Hall LE12 8BB	01509 414287	7:30pm
Sat 4 Apr	Kirby Bellars Village Hall LE14 2EA	01664 813938	7:30pm
Sun 5 Apr	Greetham Community Centre LE15 7NG	01572 812804	7:30pm
Thu 23 Apr	Ryhall Village Hall PE9 4HR	01780 754621	7:30pm

CHRIS WOOD AND KARINE POLWART - FROM THE FLOOR

Wed 1 Apr	Long Clawson Village Hall LE14 4NA	01664 822247	7:30pm
Thu 2 Apr	Waltham-on-the-Wolds Village Hall LE14 4AG	01664 464082	7:30pm
Fri 3 Apr	Manton Village Hall LE15 8SU	01572 737503	8:00pm

ROGUE THEATRE - PATHWAY TO THE RED SUN

Fri 3 Apr	Oakham, Vale of Catmose College LE15 6NU	01572 725904/722286	7:30pm
Sat 4 Apr	Appleby Magna, Sir John Moore Foundation DE12 7AH	01530 273629	7:30pm

RATATAT THEATRE COMPANY - APRIL IN PARIS, BY JOHN GODBER

Tue 14 Apr	Glenfield Memorial Hall LE3 8DL	0116 287 1997	7:30pm
Wed 15 Apr	South Luffenham Village Hall LE15 8NW	01780 720687	7:30pm
Thu 16 Apr	Seagrave War Memorial Hall LE12 7LU	0845 691 8923	7:30pm
Fri 17 Apr	Enderby Civic Centre LE19 4NT	0116 275 3711	7:30pm
Sat 18 Apr	Ashby Magna Village Hall LE17 5NQ	01455 202599	7:30pm

RATATAT THEATRE COMPANY - APRIL IN PARIS, BY JOHN GODBER (CONTINUED)

Sun 19 Apr	Ibstock, The Palace Community Centre LE67 6LG	01530 267303	7:00pm
Thu 30 Apr	Queniborough Village Hall LE7 3DH	0116 269 7431	7:30pm
Thu 14 May	Barlestone C of E School Community Hall CV13 OEP	01455 291577	7:30pm
Sat 16 May	Bottesford Victory Commemoration Hall NG13 0BG	01949 843402	7:30pm
Sun 17 May	Redmile, St Peter's Church NG13 0GA	01949 843789	7:30pm

MERVYN STUTTER PRESENTS - AN EVENING WITH MERVYN STUTTER

Fri 17 Apr	Hoby & District Village Hall LE14 3DT	01664 434120	7:30pm
Sat 18 Apr	Wymondham Village Hall LE14 2AB	01572 787247 / 07792 756511	8:00pm
Sun 19 Apr	Barlestone St Giles Football Club CV13 OEP	01455 291577	7:30pm
Thu 30 Apr	Peatling Magna Village Hall LE8 5UQ	0116 247 8933 / 8510	7:30pm
Fri 1 May	South Kilworth Village Hall LE17 6DS	01858 575520	7:30pm
Fri 8 May	Old Dalby Village Hall LE14 3LR	01664 822603 / 823391	8:00pm
Sat 9 May	Scaford Village Hall LE14 4DZ	01664 444639	7:30pm
Fri 15 May	Kirby Bellars Village Hall LE14 2EA	01664 813938	7:30pm

HELEN BARRETT - THE LADY LOVES JAZZ - SONGS WITH PIANO ACCOMPANIMENT

Fri 17 Apr	Countesthorpe Village Hall LE8 5TB	0116 277 6259	7:30pm
Fri 1 May	Plungar Village Hall NG13 0JE	01949 860257	8:00pm
Sat 2 May	Morcott Village Hall LE15 9DX	01572 747515	7:30pm
Sun 3 May	Burton Overy Village Hall LE8 9EW	0116 259 3576	7:45pm
Thu 7 May	Quorn Village Hall LE12 8BB	01509 414287	7:30pm
Fri 8 May	Wymeswold Memorial Hall LE12 6TY	01509 880277	8:00pm
Sat 9 May	Stathern War Memorial Institute LE14 4HW	01949 860602	7:30pm

REG MEUROSS AND JACKIE OATES - SONGROADS

Thu 23 Apr	Illston Village Hall LE7 9EG	0116 259 6925 / 6713	7:30pm
Fri 24 Apr	Wymeswold Memorial Hall LE12 6TY	01509 880277	8:00pm
Sat 25 Apr	Claybrooke Magna Village Hall LE17 5AJ	01455 209336	7:30pm
Sun 26 Apr	Burton Lazars Village Hall LE14 2UR	01664 567752	7:30pm
Wed 6 May	Hugglescote, St John The Baptist Church LE67 2BQ	01530 456160	7:30pm

LEMPEN PUPPET THEATRE COMPANY - THE AM-A-ZING THING

Fri 1 May	Anstey, Jubilee Hall LE7 7AY	0116 236 2646	6:30pm
Sat 2 May	Ibstock, The Palace Community Centre LE67 6LG	01530 267303	11:00am
Sun 3 May	Appleby Magna, Sir John Moore Foundation DE12 7AH	01530 273629	4:00pm

THIRD PARTY PRODUCTIONS - THE TRAGICAL HISTORY OF DR FAUSTUS - A DAMNED FINE PLAY!

Thu 7 May	Market Bosworth, Dixie Grammar School CV13 2LE	01455 291303	7:30pm
Fri 8 May	Ashby de la Zouch, The Venture Theatre LE65 1HU	01530 411767	8:00pm

UMDUMO WESIZWE - QO

Tue 26 May	Waltham on the Wolds Village Hall LE14 4AG	01664 464082	7:30pm
Wed 27 May	Appleby Magna, Sir John Moore Foundation DE12 7AH	01530 273629	7:30pm
Thu 28 May	Hoby & District Village Hall LE14 3DT	01664 434120	7:30pm

Please call contact number to book tickets, gain information on ticket prices (usually between £6 - £8), check start times and get directions to the venue.

Thanks to all Centre Stage local promoters for their hard work and enthusiasm in hosting shows.

Disability Access and Venues

Anstey, Jubilee Hall	
Appleby Magna, Sir John Moore Foundation	
Ashby de la Zouch, The Venture Theatre	
Ashby Magna Village Hall	
Barlestone CofE Primary School Community Hall	
Barlestone St Giles Football Club	
Barrow -upon-Soar, Humphrey Perkins High School	
Bottesford Victory Commemoration Hall	
Burbage Constitutional Club	
Burton Lazars Village Hall	
Burton on the Wolds Village Hall	
Burton Overy Village Hall	
Claybrooke Magna Village Hall	
Countesthorpe Village Hall (Active Arts)	
Countesthorpe St Andrew's Church (Active Arts)	
Enderby Civic Centre	
Fleckney Village Hall	
Glenfield Memorial Hall	
Greetham Community Centre	
Hoby & District Village Hall	
Hugglescote, St John The Baptist Church	
Hungarton Village Hall	
Ibstock, The Palace Community Centre	
Illston Village Hall	
Kirby Bellars Village Hall	
Long Clawson Village Hall	
Manton Village Hall	
Market Bosworth, Dixie Grammar School	
Morcott Village Hall	
Oakham, Catmose Theatre, Vale of Catmose College	
Old Dalby Village Hall	
Peatling Magna Village Hall	
Plungar Village Hall	
Queniborough Village Hall	
Quorn, St Bartholomew's Church	

Quorn Village Hall	
Redmile, St Peter's Church	
Ryhall Village Hall	
Scalford Village Hall	
Seagrave War Memorial Hall	
South Kilworth Village Hall	
South Luffenham Village Hall	
Stathern War Memorial Institute	
Thringstone Community Centre	
Twyford Village Hall	
Waltham on the Wolds Village Hall	
Wymeswold Memorial Hall	
Wyndham Village Hall	

Key to Access Symbols

Reservable/general parking on site	
On street parking	
Designated parking OR booked prior arrangement	
Level entrance	
Ramp approached up	
Ramp approached down	
Total number of steps at entrance	
Alternative wheelchair entrance	
Ramp on internal route	
Ramp on internal route	
Internal width restricted	
Total number of steps on internal route	
Internal lift	
Standard WC facility only	
Wheelchair accessible toilet	
Wheelchair accessible toilet with transfer space limited	
Induction loop	
Infrared System	
Assistance dogs welcome	

Access information

The access information given has been supplied by the individual venues and collated by Artservice; to the best of our knowledge and belief, it is accurate. Please call venue for further information, or clarification on specific details, and particularly with regard to advice on access for Service Dogs where individual venues have not specified.