



Gatekeeper

Upperwings

On the forewing two small white spots are enclosed within a black spot.



Underwings

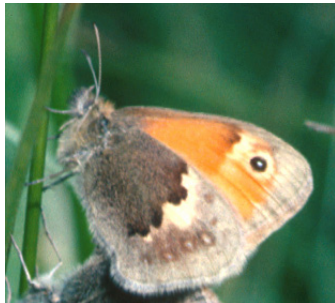
This is easily seen whether the wings are open or closed



Meadow Brown

Underwings

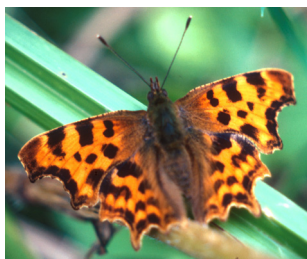
On the forewing: only one white spot enclosed within a black spot. This is easily seen whether the wings are open or closed. The three red dots are mites feeding on the butterfly's blood. Another Leicestershire species, The Wall, has one white spot enclosed within a black spot but the wing is brighter and more patterned.



Small Heath

Underwings

When the forewing is closed: one cream spot encased with black on a cream background. Notice the broad creamy band on the hindwing. The Large Heath, a similar species, does not occur in Leicestershire or Rutland.



Comma

Upperwings

The Comma gets its name from a small white comma on the underside of its hindwing, only on show when the wings are closed. When the wings open the Comma is often confused with Fritillary butterflies. Like the Fritillary butterflies it is a strong flier. In flight it may be difficult to identify with certainty. At rest, the ragged appearance to the wings should aid identification.

Common Leicestershire and Rutland Butterflies

Pictures by kind permission of Graham Finch



High Brown Fritillary

No recent records

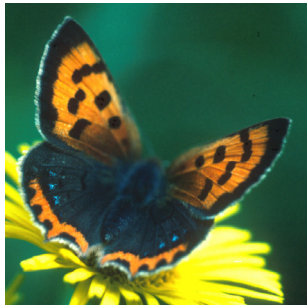
Compare the shape of the wings to those of the Comma butterfly's. Butterflies often damage the edges of their wings, but a 'worn' Fritillary or an individual that has been 'pecked' by birds should be instantly recognisable.



Small Copper

Upperwings

This species shouldn't be confused with any other butterfly. There are no other species of Copper in Great Britain except the Dutch form of Large Copper at Woodwalton Fen in Cambridgeshire. The Large Copper only survives due to a captive breeding programme.



Look out for the form *caeruleopunctata* of the Small Copper which has blue spots on the uppersurface of the hindwings.



Green Veined White

Upperwings—See photo to the left

The undersurface of the hindwing, however, is suffused yellow and the veins are 'green'. The green veins are just visible on the upper surface of the wings and confusion with the small white and large white arises. In flight, the body of the green-veined white appears really black.



Large White

Underwings

Freshly emerged insects show a yellow hue on the underside of the hind wing. But they do not have 'green veins'.



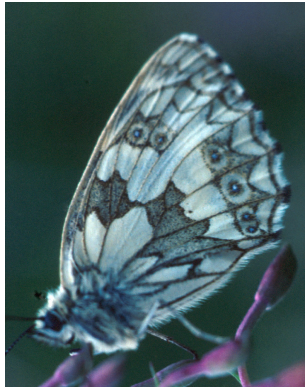
Orange-tip

Underwings

The mottled green appearance to the hind wing should not cause confusion with the green-veined white, because the green on the orange-tip extends well beyond the veins. Notice also the mottled eye. Only the male has orange tips.

Common Leicestershire and Rutland Butterflies

Pictures by kind permission of Graham Finch



Marbled White

Found in only a couple of sites in Leicestershire and Rutland, this striking butterfly cannot be confused with any of the other 'whites'. It is actually related to the gatekeeper, meadow brown and small heath – not a 'white' at all.



Large skipper Underwings

General coloration is orange, with a mottled appearance on the wings. This is seen whether the wings are open or closed.



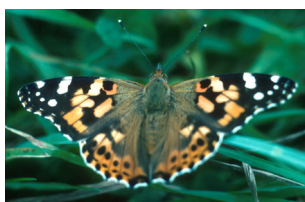
Small/Essex Skipper

General coloration is plain orange, lacking the mottled appearance of the Large Skipper. Antennae of Essex Skipper are black underneath whereas antennae of small skipper are ochreous yellow underneath. Insects in photograph are Essex Skipper. Rutland Water Nature Reserve is a good site for Essex Skipper.



Large Skipper Underwings

The mottled appearance is particularly evident on the uppersurface of the wing.



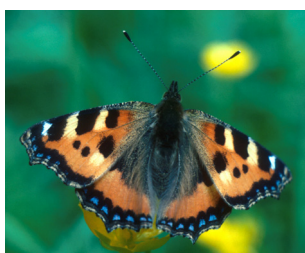
Painted Lady Upperwings

White markings in the black area near the wing tips. Yellow or red coloration absent.



Red Admiral Upperwings

Sooty black and red with white markings in the area around the wing tip.



Small Tortoiseshell Upperwings

Yellow marks on leading edge of forewing, equal in size to black marks. Blue edging to other edges.

Common Leicestershire and Rutland Butterflies

Pictures by kind permission of Graham Finch