

TRAVEL TO WORK

- **There is a net outflow from the District, and the majority of the workplace population live outside the District.**
- **Leicester City is the most popular destination for work for people living in Blaby, and also provides the workforce with the most people from outside the District.**
- **In Blaby 72% of people aged 16 to 74 in employment travel to work by car**

The following tables presents data from the recently released origin destination tables from the 2001 Census at district level.

Table 51: Travel to work

	Number of residents aged 16 to 74	Workplace population	Lives and works in the District	% of workplace population living and working in the District	Lives in and works outside District	Lives outside and works in District	Net Flow	% of workplace population living outside but working in District
	66,208	41,078	18,044	44%	29,092	23,034	-4,990	56%

Journey Destination

Table 52: District destination of people aged 16 to 74 in employment

	Number of people	% of people leaving Blaby to work
Blaby	18,044	-
Leicester	16,141	56%
Hinckley & Bosworth	2,595	9%
Oadby & Wigston	2,092	7%
Harborough	1,920	7%
Charnwood	1,294	4%
Coventry	614	2%
North West Leicestershire	551	2%
Rugby	384	1%
Nuneaton and Bedworth	294	1%
Birmingham	286	1%

Journey Origin

Table 53: District origin of people aged 16 to 74 in employment

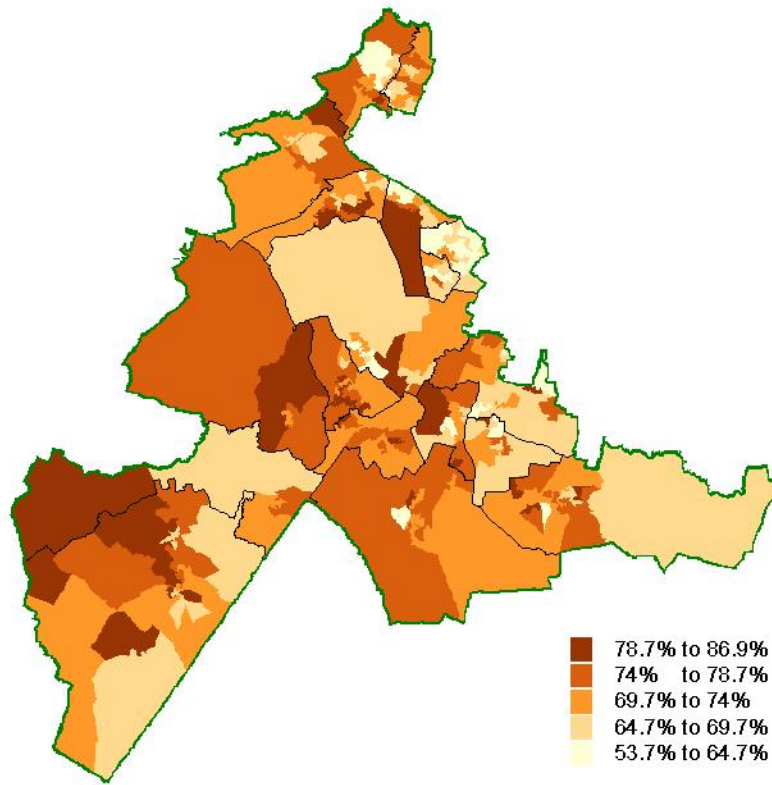
	Number of people	% of people entering Blaby to work
Blaby	18,044	-
Leicester	7,254	32%
Hinckley & Bosworth	3,160	14%
Harborough	2,570	11%
Charnwood	2,472	11%
Oadby & Wigston	2,371	10%
North West Leicestershire	997	4%
Melton	398	2%
Rushcliffe	242	1%
Nuneaton and Bedworth	193	1%
Coventry	161	1%

Mode of transport

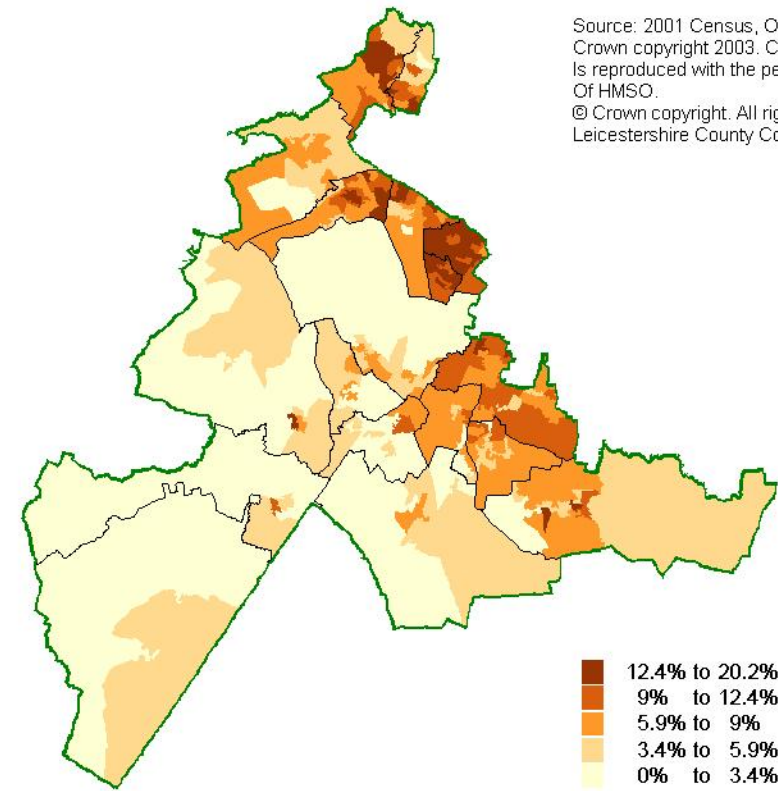
- In Blaby 72% of people aged 16 to 74 in employment travel to work by car, similar to the proportion for the Leicestershire County of 71%.
- 7% travel to work by bus, slightly higher than the proportion of 5% for the County area.

Below are maps showing mode of travel by ward for the District by output area

Map 20: Percentage travelling to work by car (either driving or passenger) by Output Area



Map 21: Percentage travelling to work by Bus by Output Area



Source: 2001 Census, Output Area Boundaries
Crown copyright 2003. Crown copyright material
is reproduced with the permission of the Controller
Of HMSO.
© Crown copyright. All rights reserved.
Leicestershire County Council.