

Join in with the country's biggest archaeological festival and discover what's right here on your doorstep.

Find out about the archaeology of Leicestershire and Rutland with a fascinating range of events, talks and guided tours from some of the county's archaeological experts.



DIGGING INTO THE ANTIQUES ROADSHOW

Tuesday 5th July 2011 7.30pm The United Reformed Church, The Borough, Hinckley LE10 1NL

The Hinckley Archaeological Society invites you to a fascinating illustrated talk by Lars Tharp about archaeology and his experiences with the Antiques Roadshow. Peter Liddle, Leicestershire's Community Archaeologist, will introduce the evening with an overview of the forthcoming festival.

£5; BOOKING RECOMMENDED Tickets may be available on the night. Call 01455 636833 /01455 634765 for details and availability.



Hands-on Discovery

DISCOVER ARCHAEOLOGY

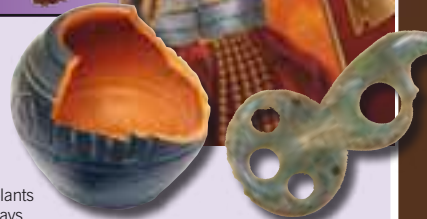
Tuesday 19th and 26th July,
Saturday 23rd July 1pm – 4pm
Rutland County Museum, Catmose
Street, Oakham, LE15 6HW.
Tel 01572 758440

Discover what skeletons, teeth and plants can tell us about the past. With displays and a chance to get hands-on with the help of an archaeologist. Drop in session. **FREE.**

TRY YOUR HAND AT DIGGING

Saturday 23rd, Sunday 24th, Saturday 30th & Sunday 31st July 9.30am – 12.30pm & 1.30pm – 4.30pm
Newhouse Grange, Orton Lane, Sheepy Magna CV9 3NJ

Join the Hinckley Archaeological Society at one of these fascinating sessions on



archaeological excavations. For those with little or no previous experience. **FREE.** Booking essential 01455 634765.

ROMAN CRAFTS

Sunday 24th July 11.30am – 3.30pm
Jewry Wall Museum, St Nicholas Circle, Leicester, LE1 4LB.

Come along and make your own Roman water clock, writing tablet and walnut game. **FREE.**

Supported by
Leicestershire County Council;
Leicestershire Fieldworkers;
Leicestershire Archaeological and Historical Society; University of Leicester School of Archaeology and Ancient History.

How to get involved

Leicestershire and Rutland have a vibrant archaeological scene. New members are always welcome at all the local groups. Come along to the many events during the festival week and talk to members of the various groups, or write to:

Leicestershire Fieldworkers

C/o The Community Archaeologist, Room 400, County Hall, Glenfield, Leicester LE3 8RE.

Tel: **0116 3058326.**

Leicestershire Field workers has over 400 members countywide and is an umbrella group for those interested in active fieldwork, co-ordinating a network of over 20 local groups across Leicestershire. It runs a lecture series and trips as well as training days.

www.leics.gov.uk/archaeological_fieldwork_group

www.leicsfieldworkers.co.uk

Leicestershire Young Archaeologists Club

The club for 8 to 16 year olds interested in archaeology. Normally meets once a month on Saturdays. Further details from the Community Archaeologist - Details above.

Leicestershire Archaeological and Historical Society

Contact the Chairman: Richard Buckley, C/o ULAS, University of Leicester, University Road, Leicester, LE1 7RH. The 'Arch and Hist' is Leicestershire's oldest archaeological society, having recently celebrated its 150th birthday. It publishes the 'Transactions' – the journal of record for the county – and the

Leicestershire Historian. It runs a lecture series and trips.
www.le.ac.uk/lahs

The LAHS Networks Project

provides a forum for all history groups within Leicestershire and Rutland. Membership is free. For more information please contact the co-ordinator, Caroline Wessel, The Old Forge, High Street, Desford, LE9 9JF (cmwessel@aol.com)

University of Leicester School of Archaeology and Ancient History

University Road, Leicester, LE1 7RH. Tel: **0116 252 2611.**

If you have an interest in the past and would like to convert this into a qualification then we can offer different options for study: Certificate of Archaeology – part-time 2 year course (contact Nick Cooper at njc9@le.ac.uk); Campus based degrees (arch-anchist@le.ac.uk) and Distance Learning Courses (archdl@le.ac.uk)

Leicestershire Festival Organiser

For enquiries about the Festival and other local groups, please contact Peter Liddle, Community Archaeologist, Room 400, County Hall, Glenfield, Leicester, LE3 8RE. Phone: **(0116) 305 8326**; e-mail: peter.liddle@leics.gov.uk www.leics.gov.uk/community_archaeology

National Festival

To see what else is taking place across the UK as part of the CBA Festival of British Archaeology, please visit www.archaeologyfestival.org.uk.

Find out more about archaeology in Britain by joining the Council for British Archaeology or its Young Archaeologists' Club - please visit www.britarch.ac.uk/join for more information.

75% recycled
When you have finished with this leaflet please recycle it



FESTIVAL OF LEICESTERSHIRE & RUTLAND ARCHAEOLOGY

Part of THE CBA FESTIVAL OF BRITISH ARCHAEOLOGY

Saturday 16th – Sunday 31st July 2011

www.leics.gov.uk/archaeologyfestival



CBA Council for British Archaeology
www.britarch.ac.uk
Archaeology for all

Leicestershire: a great place to live and visit.

Guided Walks & Tours

BATH HOUSE TOUR

16th – 31st July 12pm – 12.50pm
Jewry Wall Museum, St Nicholas Circle, Leicester, LE1 4LB. Tel: 0116 2254971

Enjoy a 50 minute tour of Leicester's Roman Bath House, arguably the finest surviving set of Hadrianic baths in Britain. **FREE.**

TOUR OF LEICESTER'S MEDIEVAL CHURCHES

Saturday 16th July 2pm – 4pm
Jewry Wall Museum, St Nicholas Circle, Leicester, LE1 4LB.

Join Mike Hawkes for a walk around Leicester's medieval churches. **FREE.**

GUIDED WALK OF HALLATON VILLAGE

Saturday 16th, Sunday 17th, Saturday 23rd, Sunday 24th, Saturday 30th & Sunday 31st July 1.30pm
Starting at Hallaton Museum, Hog Lane, Hallaton, LE16 8UE

See the sights of the picturesque village of Hallaton including the church, stone cottages and old market with its Butter Cross (approx one hour duration). £2

GUIDED WALK TO HALLATON CASTLE

Saturday 16th, Sunday 17th, Saturday 23rd, Sunday 24th & Sunday 31st July 3pm
Starting at Hallaton Museum, Hog Lane, Hallaton, LE16 8UE

Visit the earthworks of Leicestershire's finest Norman motte and bailey castle (approx 1.5 hours duration). £2.

ASHBY CASTLE TOURS

Saturday 16th, Sunday 17th, Saturday 23rd & Sunday 24th July 2pm
Ashby Castle, South Street, Ashby de la Zouch, LE65 1BR

Enjoy a guided tour of one of Leicestershire's finest medieval sites.

Adults £4.30, Concessions £3.90, Child £2.60, Family £11.20.
English Heritage Members and under fives **FREE.** Enquiries and bookings on 01530 413343.

THE BATTLE OF BOSWORTH GUIDED WALK

Saturday 16th, Sunday 17th, Sunday 24th & Sunday 31st July 11am
Bosworth Battlefield Centre, Ambion Lane, Sutton Cheney, CV13 0AD

A 2km (1.25m) guided walk exploring the Battle of Bosworth, the death of King Richard III and the unlikely victory of Henry Tudor. A chance to enjoy the views of the recently found battlefield!
Adults £3.50, Concession £2.50, under 3s **FREE.**
Call 01455 290429 for further information or to book.
www.bosworthbattlefield.com

INDUSTRIAL ARCHAEOLOGY TOUR

Sunday 17th, Sunday 24th & Sunday 31st July 2pm – 5pm
Gorse Field, Swannington

Come and join Swannington Heritage Trust and Leicestershire Industrial History Society who will guide you round a medieval coal mine site dating back to c1205, the excavations of the engine house for the former Alabama Pit at the Califat Colliery, the reconstructed horse gin, the Peter Neaverson interpretation centre and the newly recapped Hough Mill.
www.swannington-heritage.co.uk **FREE.**

GRACE DIEU PRIORY GUIDED WALK

Sunday 17th, Thursday 21st, Saturday 23rd, Sunday 24th & Thursday 28th July 3pm and 7pm

Grace Dieu Priory, near Thringstone, Leicestershire

Join the Friends of Grace Dieu on this 3.2km (2 mile) walk and discover the secrets of Leicestershire's medieval nunnery. Refreshments available on 23rd-24th July. Meet at the Bull's Head Car Park. Adults £3, children **FREE.**

GUIDED WALK AT BURROUGH HILL

Monday 18th July 2.30pm
Meet in the car park at Burrough Hill Country Park, Somerby Road, Burrough on the Hill, LE14 2QZ.

Visit Leicestershire's finest hill fort with University of Leicester archaeologist, Dr. Jeremy Taylor and see the second season of excavations that are helping us to discover the hill's history. Walk around 1.5km (1 mile). Adults £3, Children **FREE.** Car parking charge.
www.leics.gov.uk/burroughhill

ARCHAEOLOGY OF STANDING BUILDINGS – SOCIAL HISTORY THROUGH ARCHITECTURE

Wednesday 20th July 7pm – 9pm
Sir John Moore Foundation, Top Street, Appleby Magna, DE12 7AH.

Join our resident historical archaeologist for a tour of the 17th century Sir John Moore's School and discover the clues held by buildings which reflect their history and changing societies.

£3. Call 01530 273629 to book.

A WALK AROUND MOWSLEY

Wednesday 20th July 6.45pm – 8.30pm

Accompany John Lacey for a 2km (1.25 mile) walk around the village and its church. £2.
Call 0116 2402386 to book (numbers limited).

CHURCHES, CHAPELS & BURIAL GROUNDS

Wednesday 20th & Wednesday 27th July 10am – 11.30am

Meet at Memorial Hall, Melton Road, Thurmaston

Join in this guided walk of Thurmaston which explores religion, life, death and the archaeological record.
£2. Further details are available by calling 0116 2601776

GUIDED WALK OF STAUNTON HAROLD

Wednesday 20th & Friday 22nd July 10.30am
Meet at the church, Staunton Harold, LE65 1RU

Join Betty Cawte on a walk to study the archaeology of Staunton Harold including the church, ice house, deserted village and dovecote, and to hear the history of the house and gardens. **FREE.**

TREASURES OF THE JEWRY WALL MUSEUM

Wednesday 20th & Wednesday 27th July 2pm

Jewry Wall Museum, St Nicholas Circle, Leicester, LE1 4LB. Tel: 0116 2254971

A fascinating guided tour of the Museum's highlights provided by Stuart Bailey from the Friends of Jewry Wall Museum. **FREE.**

GUIDED WALK OF LEICESTER ABBEY

Thursday 21st July 6pm
The Visitor Centre, Abbey Park, Abbey Park Road, Leicester, LE4 5AQ

Join Richard Buckley, Director of Excavations at The University of Leicester Archaeological Services, for a guided walk of Leicester Abbey and Cavendish House. A Leicestershire Archaeological and Historical Society/ULAS/Leicester City Council event. **FREE.**
www.le.ac.uk/lahs www.le.ac.uk/ulas.

SNIBSTON RAILWAY AND EARLY COALVILLE

Thursday 21st July 10.30am – 12.30pm
Snibston Discovery Museum, Ashby Road, Coalville LE67 3LN 01530 278444

Starting with a ride on the Snibston Colliery Railway, this is a fascinating walking tour of historic buildings and places in Coalville. Led by local historian Denis Baker. £3.50 (inc tea or coffee). Booking required.

THE ARCHAEOLOGY AND HISTORY OF CASTLE HILL PARK

Friday 22nd July 2pm – 4.30pm
Community Orchard Field, Astill Lodge Road, Beaumont Leys, Leicester, LE4 1EF

A lovely display and guided walk introducing the history and archaeology of Castle Hill Country Park including the Hospitaller Preceptory Earthworks and King William's Bridge. Guided walk leaves at 2.30pm. **FREE.**

HISTORIC BUILDINGS OF CALDECOTT

Saturday 23rd July 2.30pm – 5.30pm
Meet at Caldecott Village Hall, Church Lane, Caldecott, Market Harborough LE16 8RW

Walk with a historian through the picturesque, rural village of Caldecott where many historic buildings have survived. Teas available in the Village Hall. **FREE.** Booking required on 01572 823328 or info@lyddingtonhistory.co.uk

GUIDED WALK TO BURY CAMP & OLD HAYS, RATBY

Sunday 24th July 2pm – 5pm
Meet at Plough Inn, Burroughs Road, Ratby, LE6 0XZ

Walk from the centre of Ratby to an Iron Age fort at Bury Camp and a 13th century moated farm at Old Hays, Ratby. £2. No dogs.

GUIDED WALK OF BEACON HILL

Monday July 25th 2pm
Meet Upper Car Park, Beacon Hill Country Park, Beacon Road, Woodhouse Eaves, LE12 8SP

Join Peter Liddle, Leicestershire's Community Archaeologist, for a leisurely walk around the prehistoric hill fort. £3 Adults, Children **FREE.** Car parking charges apply. No booking required.
www.leics.gov.uk/beaconhill

STONTON WYVILLE GUIDED WALK

Tuesday 26th July 2pm
Meet in centre of Stonton Wyville, LE16 7UG.

Join Peter Liddle, Leicestershire's Community Archaeologist, for a walk around this shrunken village. With a look at the church, manor house, Tudor garden earthworks, village earthworks and the former watermill. £3 Adults, Children **FREE.**

LEICESTER CASTLE AND THE NEWARKE GUIDED WALK

Tuesday 26th July 6.30pm – 8pm
meet at Richard III statue in Castle Gardens, LE1 5WN.

Richard Buckley and Neil Finn of ULAS will guide you around the Castle* and the Newark. A Leicestershire Archaeological and Historical Society/ULAS event. *Interior access subject to building work and accessibility **FREE.**

KNAPTOFT DESERTED VILLAGE

Wednesday 27th & Saturday 30th July 7pm – 8.30pm

Meet at the car park at church ruins.

A 1.6km (one mile) guided walk of Knaptoft with John Lacey providing the chance to look at the village remains and talk about its desertion. No booking required. For details please call 0116 240 2386. **FREE.**

GUIDED WALK AROUND THE HISTORIC BUILDINGS OF HINCKLEY

Wednesday 27th July 7pm – 8pm
Departs from Hinckley & District Museum, 18, Lower Bond Street, Hinckley LE10 1QU

Join local historian, Gregory Drozd MA, for a 2.4km (1.5 mile) guided walk around Hinckley to look at the historic buildings and to learn about the folklore of the town. £2.50 (proceeds to Hinckley & District Museum). Booking on 01455 440103.

EVINGTON MOAT GUIDED TOUR

Thursday 28th July 2pm – 4pm and 6.30pm – 8.30pm

Meet at the Shady Lane Arboretum (at the junction of Gartree Road)

Join Peter Liddle to visit 'Piggy's Hollow', one of the best moated site complexes in Leicestershire which includes the site of the manor house, fishponds and a mill dam next to Evington Parish Church. A hidden gem! Adults £3, Children **FREE.**

GUIDED WALK OF BREEDON HILL AND CHURCH

Friday 29th July 2pm
Meet in the church car park on the top of Breedon Hill, LE73 8HF

Betty Cawte, Claire Hill and Peter Liddle will guide you around the remains of this Iron Age hillfort and its priory church which boasts one of the best collections of Anglo-Saxon carvings in the country. Refreshments available.
Adults £3, children **FREE.**

CITY OF THE DEAD – SECRETS OF WELFORD ROAD CEMETERY

Saturday 30th July 10.30am – 12.15pm
Welford Road Cemetery, Welford Road, Leicester, LE2 6DB

Welford Road Cemetery is a vast necropolis full of fascinating Victorians and Edwardians, their splendid monuments and their humble graves. It is also a beautiful wildlife haven. Join our guide at the launch of this brand new guided walk.
£3. Booking on 07899 708465.

GUIDED WALK OF OSGATHORPE SECTION OF CHARNWOOD CANAL

Saturday 30th July 10am – 12pm
Starting at Storers Arms, Osgathorpe, LE12 9TA.

Join Osgathorpe's Heritage Warden, Dave Whiting, to see the remains of the Charnwood Forest Canal and hear about its history. **FREE.**

LYDDINGTON HISTORIC BUILDINGS WALK

Saturday 30th July 2.30pm – 5.30pm
Meet at Lyddington Village Hall, Main Street, Lyddington, LE15 9LR

A fascinating guided walk through Lyddington which belonged to the Bishop of Lincoln throughout the medieval period and which has many interesting buildings including the Bedehouse, once a palace of the Bishop. **FREE.**
Booking required on 01572 823328 or info@lyddingtonhistory.co.uk

DESFORD HERITAGE WALK

Sunday 31st July 1.30pm
Starting at the Tropical Bird Garden on Lindridge Lane, LE9 9GN

A walk around Desford's conservation area preceded by a short photographic presentation 'Desford Then and Now'. **FREE.**

Family Friendly Archaeology

ARCHAEOLOGY FUN FOR THE WHOLE FAMILY

16th – 30th July
Rutland County Museum, Catmose Street, Oakham, LE15 6HW
Please contact 01572 758440 for opening times.

Come and have a go at our quizzes, games and archaeological puzzles. **FREE.**

ROMAN ARMY DAY

Sunday 17th July 11.30am – 3.30pm
Jewry Wall Museum, St Nicholas Circle, Leicester, LE1 4LB.
Tel. 0116 2254971

Massive family fun with Roman Army training, talks and expert-led demonstrations. Come and train for battle and parade for a visiting senator! Swords, shields and helmets are all provided.

A Friends of Jewry Wall Museum Event. **FREE.**

COIN MAKING AT HALLATON MUSEUM

Sunday 17th July 2.30pm – 5pm
Hallaton Museum, Hog Lane, Hallaton, LE16 8UE. Tel. 01858 555305 or

Join Hallaton Treasure experts for a fun family day with coin making and other activities. Supported by the Heritage Lottery Fund. www.leicestershirevillages.com/hallaton **FREE.**

ROMAN ACTIVITY AFTERNOON

Wednesday 20th July 2 – 4pm
Donington le Heath Manor House, Coalville, LE67 2FW.

Come and meet some Romans, handle genuine Roman objects, play games and try the hands-on activities and crafts available. An activity is available every Wednesday throughout the school holidays. **FREE.**

www.leics.gov.uk/donington

BOSWORTH COSTUMED GUIDED WALK FOR CHILDREN

Wednesday 20th July 11am – 12.30pm
Bosworth Battlefield Heritage Centre, Ambion Lane, Sutton Cheney, CV13 0AD

A fascinating walk for families led by costumed guides in full character. Find out about the Battle of Bosworth and about medieval life. Aimed at children under 9 who must be accompanied by an adult.

Adults £3.50, Concession £2.50, under 3s **FREE.**

Call 01455 290429 for further information or to book.
www.bosworthbattlefield.com

AN INTRODUCTION TO THE ARCHAEOLOGY AND HISTORY OF LEICESTER'S PARKS

Thursday 21st July 2pm – 8pm
Abbey Park Education Centre, Abbey Park, Abbey Park Road, Leicester, LE4 5AQ.

A captivating display on the archaeology and heritage of Leicester's public parks, gardens and green spaces, with information on the University of Leicester excavations at Abbey Park. Children's games and activities are available between 2pm and 5pm.

LUTTERWORTH FESTIVAL OF ARCHAEOLOGY

Saturday 23rd July 10am – 4pm
Lutterworth Museum, Gilmorton Road, Lutterworth, LE17 4DY.

Join us for demonstrations of flint knapping, a practical exploration of Roman mosaics; fieldwalking techniques and finds handling. Also with a chance for children to try on Roman clothing! **FREE.**

CASTLES IN LEICESTERSHIRE

16th – 31st July 11am – 4pm
Ashby Museum, North Street, Ashby de la Zouch, LE65 1HU. Tel. 01530 560090

A stunning display, running from 4th July to 27th August, which features the castles of Leicestershire, complete with models and reconstructions. A children's workshop is also available on August 27th
Adults £1, children 50p.

BASKET MAKING WORKSHOP

Monday 25th July 10am – 4pm
Diesworth Heritage Centre, Lady Gate, Diesworth, Derby, DE74 2QF
Tel: 01332 814514

A chance to find out about basket making from expert Maggie Cooper. Maximum of 12 people, please call to book your place.

SUMMER SCHOOL

Monday 25th, Tuesday 26th, Wednesday 27th, Thursday 28th & Friday 29th July 10am – 4pm
Sir John Moore's Foundation, Top Street, Appleby Magna, DE12 7AH

Young people of 8+ can become intrepid archaeologists for a day or for a whole week on our real excavation. All tools provided. Friday 29th is family day when the whole family can see what has been done – and even join in!
£20 per day or £90 for the whole week.

HALLATON TREASURE ROADSHOW

Tuesday 26th July 10am – 4pm
Charnwood Museum, Granby Street, Loughborough, LE11 3DU

Come and explore the Iron Age as the Hallaton Treasure Roadshow visits Charnwood Museum. Learn more about the treasure and enjoy children's activities – including making your own Iron Age coin. **FREE.** Supported by the Heritage Lottery Fund.

MEET THE ANGLO-SAXONS

Wednesday 27th July 2pm – 4pm
Donington le Heath Manor House, Coalville, LE67 2FW.

Children have the chance to handle genuine objects, have a go at crafts, meet Anglo-Saxons and see how they were buried! (This is an event every Wednesday through the holidays). **FREE** entrance (small charge for some activities).
www.leics.gov.uk/donington

BATTLING BARONS

Saturday 30th & Sunday 31st July 11am – 5pm
Ashby Castle, South Street, Ashby de la Zouch, LE65 1BR Tel: 01530 413343

Hear the sound of clashing swords as our Battling Barons show off their skills.

Children can take part in their own mini-battle and the hobby horse joust is sure to keep them entertained. Refreshments available. Free parking in the Manor House School car-park. Adult £4.30, Concessions £3.90, Child £2.60, Family £11.20. English Heritage Members and under-fives **FREE.**

CELTS v ROMANS

Saturday 30th July 11am – 3.30pm
Harborough Museum, Adam and Eve Street, Market Harborough, LE16 7AG

A Roman soldier and a Celtic warrior go head to head. Whose side are you on? Make your own equipment and join the ranks! **FREE.**

Meet the Experts

I LOVE ARCHAEOLOGY!

Saturday 16th & Saturday 23rd July 11am – 3.30pm
Harborough Museum, Adam and Eve Street, Market Harborough, LE16 7AG
Tel. 01858 821085

Drop into the museum to meet archaeological experts and learn about the skills you need to dig into the past. **FREE.** Supported by the Heritage Lottery Fund.

COMBAT 1485

Saturday 16th & Sunday 17th July 11am – 3.30pm
Bosworth Battlefield Heritage Centre, Ambion Lane, near Sutton Cheney, CV13 0AD

Meet Richard III and the Fellowship of Steel as they prepare for battle (with Les Routiers de Rouen). Adults £2, concessions £1, family (2+2) £5. Book on 01455 290429.

FINDS IDENTIFICATION

Saturday 16th July 12 – 4pm
Melton Carnegie Museum, Thorpe End, Melton Mowbray, LE13 1RB
Tel: 0116 305 3860

Come along and meet Wendy Scott, Finds Liaison Officer for the Portable Antiquities Scheme, who will identify archaeological finds. There will also be a chance to meet local detectorists and fieldworkers. **FREE.**

Oakham Castle Survey Results

Wednesday 20th July 2pm – 4.30pm
Oakham Castle, Castle Lane, Market Place, Oakham LE15 6DR.
Tel 01572 758440

Come and chat to the archaeologists from Trent & Peak Archaeology and take the chance to look at the new scanning results from the recent surveys at Oakham Castle and what was revealed. Drop in session. **FREE.**

ROMANS R US

Thursday 21st July 10.15am, 11.30am & 2pm
Melton Carnegie Museum, Thorpe End, Melton Mowbray, LE13 1RB
Tel: 01664 569946

Join us for a fascinating workshop on life in Roman Britain. **FREE.** Pre-booking required. No unaccompanied children

BOWDEN'S RIDGE AND FURROW – PAST AND PRESENT

Sunday 24th July 11am – 5pm

Village Hall, The Green, Great Bowden

Come and join Great Bowden Heritage and Archaeology Group for the launch of its new book on Bowden's medieval fields. With displays, maps, guided walks and a visit by the Treasure Roadshow. Iron Age coin making, pottery making, teas and cakes also on offer. **FREE.**

LIFE IN A 13th CENTURY MANOR HOUSE

Sunday 24th July 11am – 4pm
Donington le Heath Manor House, Coalville, LE67 2FW.

Donington returns to its heyday as local group, Circa1265, populate the house. See food preparation and the arming of the knight, and handle genuine and replica objects. **FREE.**
www.leics.gov.uk/donington

FINDING LODDINGTON'S ARCHAEOLOGY

Sunday 31st July 11am – 4pm
Allerton Project Visitor Centre, Loddington, LE7 9XE

A chance to see the first 'fruits' of a fieldwalking survey of Loddington by Leicestershire County Council archaeologists and Leicestershire Fieldworkers.

With finds to see and handle, experts to talk to, walks around the village and activities around the Hallaton Treasure Project. **FREE.** Refreshments available.

FLINT KNAPPING DEMO & WORK OF HALLATON FIELDWORKERS

Sunday 31st July 10.30am – 4pm
Tin Tabernacle, Churchgate, Hallaton, LE16 8TY (next to the church)

Bob Wells will demonstrate the skills of the prehistoric flint knapper and The Hallaton Fieldwork Group invites you to an exhibition of their recent work including a geophysical survey display. Also with pottery identification sessions, a book stall and much more. **FREE.**

Displays and Exhibitions



Talks & Presentations

