

Figure 2005/2470/F01, Nottingham East Midlands Airport

Ambient Noise Levels at Monitoring Site 01, Woodhouse Eaves, 10-17 December 2004

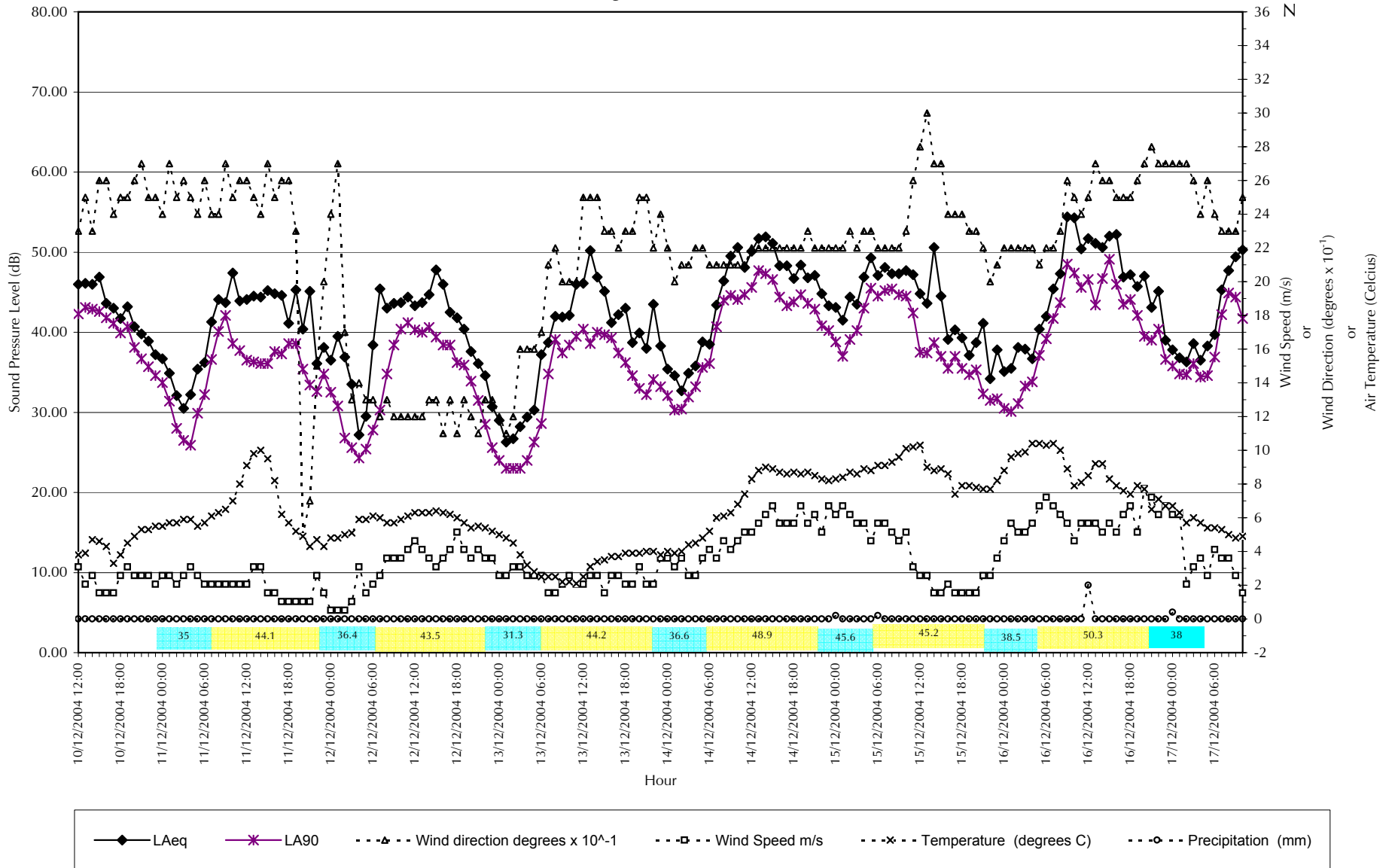


Figure 2005/2470/F02, Nottingham East Midlands Airport

Ambient Noise Levels at Monitoring Site O2 (Rearsby), 11-18 March 2005

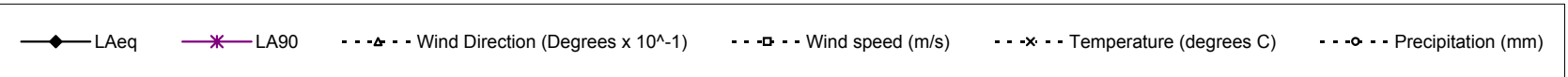
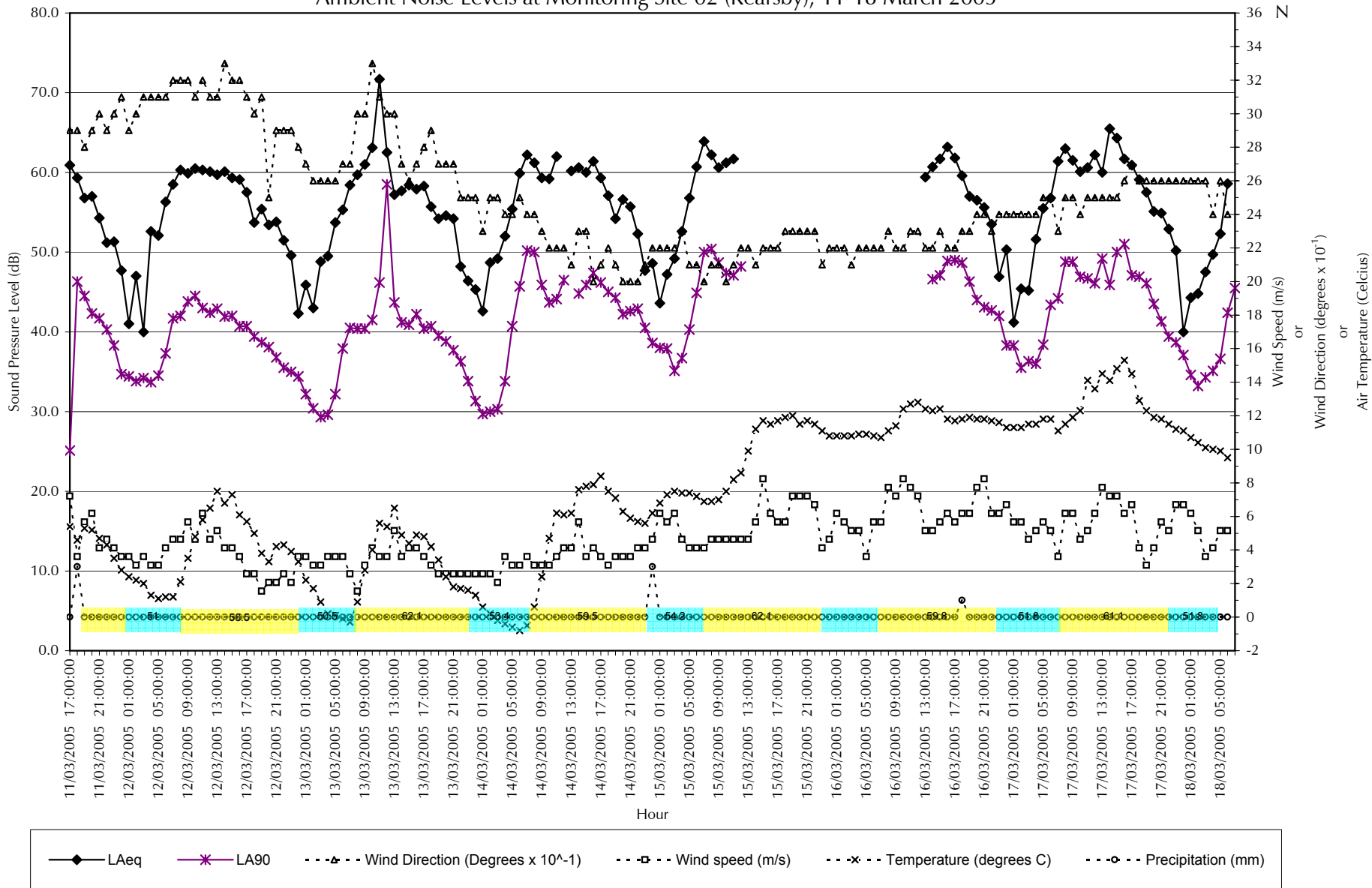


Figure 2005/2470/F03, Nottingham East Midlands Airport

Ambient Noise Levels at Monitoring Site 03 (Ilston-on-the-Hill), 11-17 February 2005

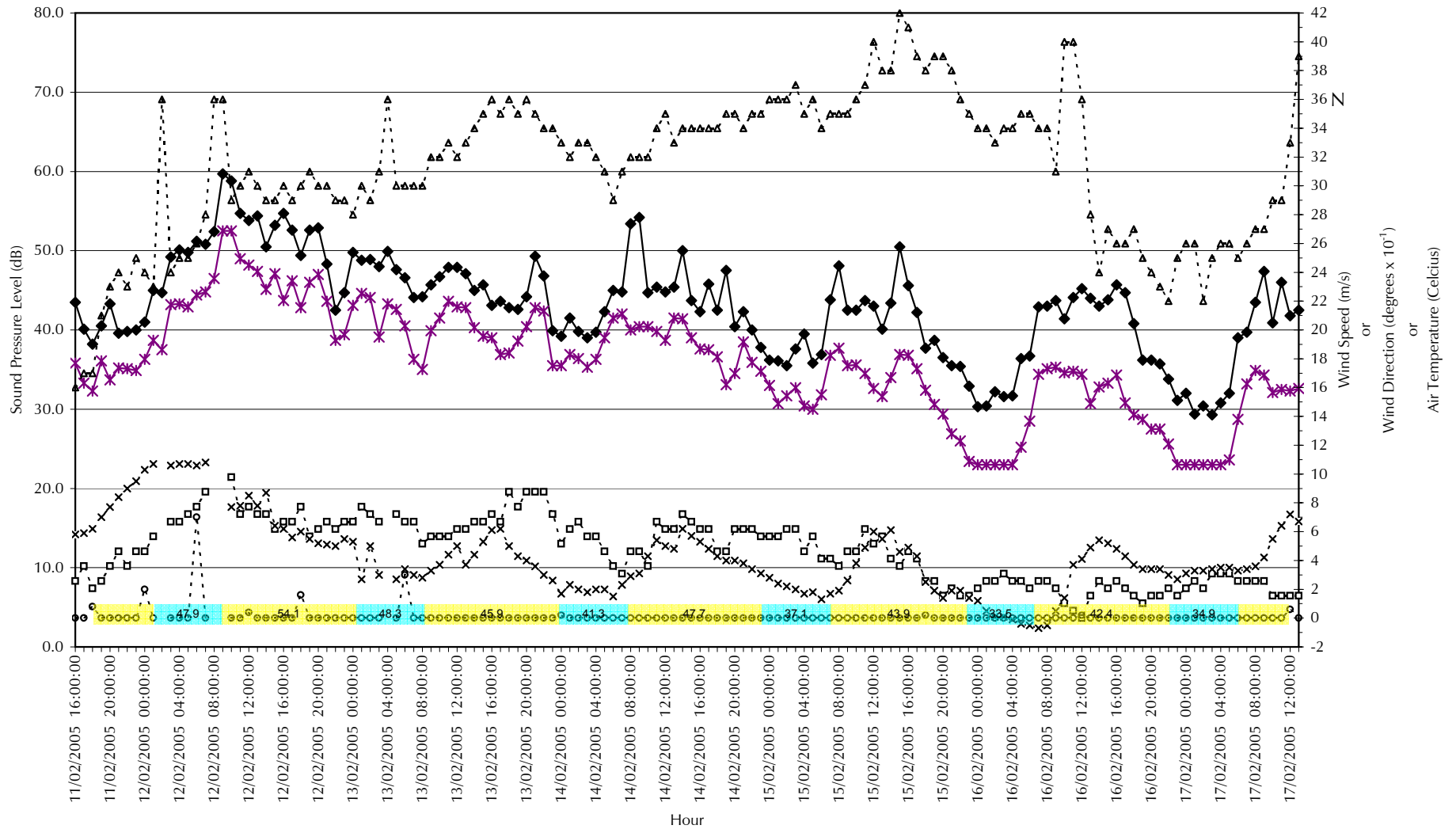


Figure 2005/2470/F04, Nottingham East Midlands Airport

Ambient Noise Levels at Monitoring Site 04 (Theddingworth), 4-11 February 2005

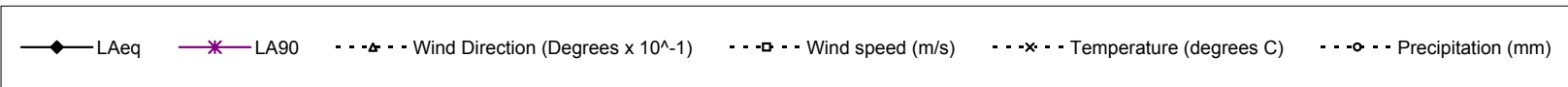
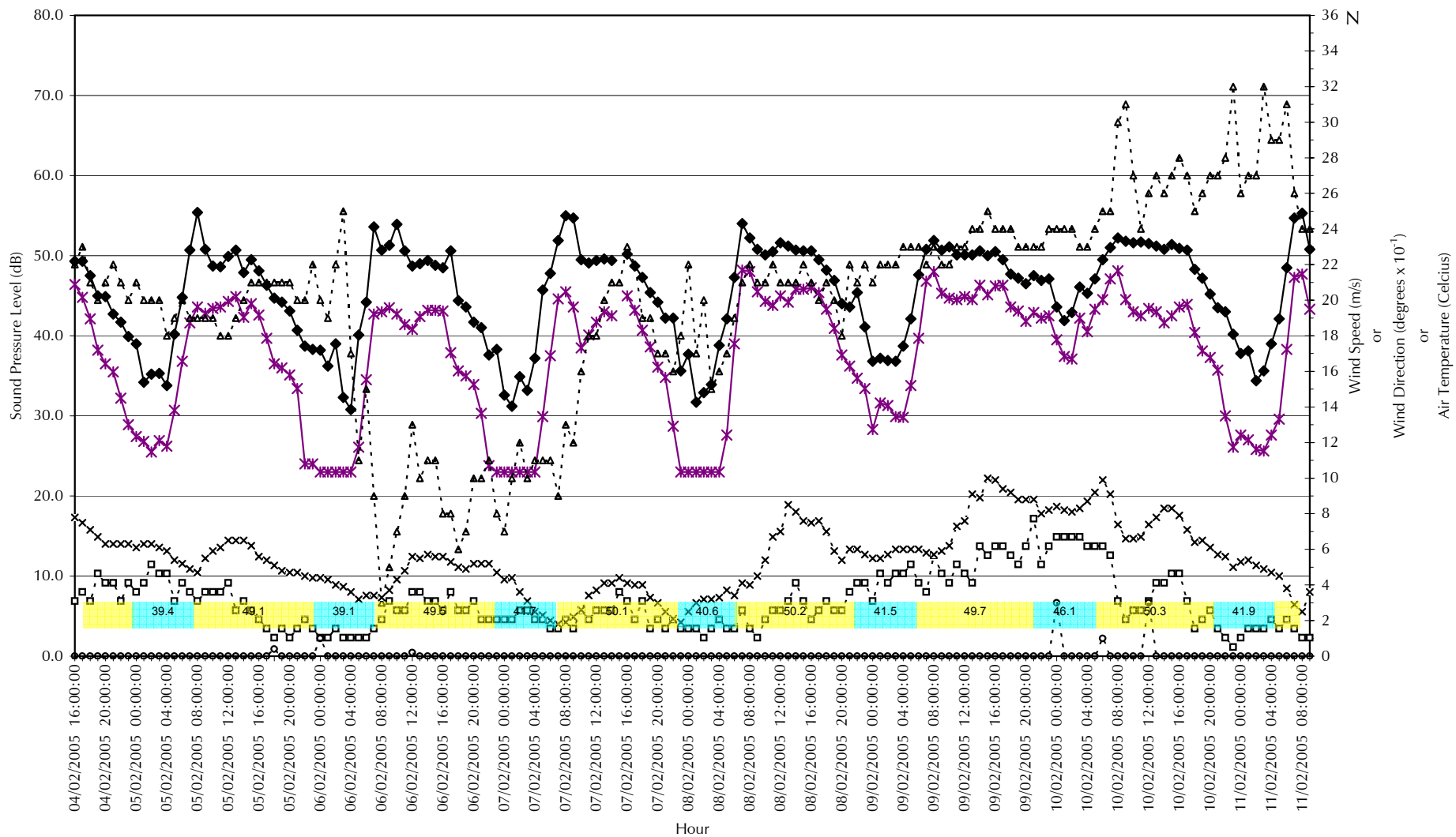


Figure 2005/2470/F05, Nottingham East Midlands Airport

Ambient Noise Levels at Monitoring Site O5 (Whitwick), 25 February - 4 March 2005

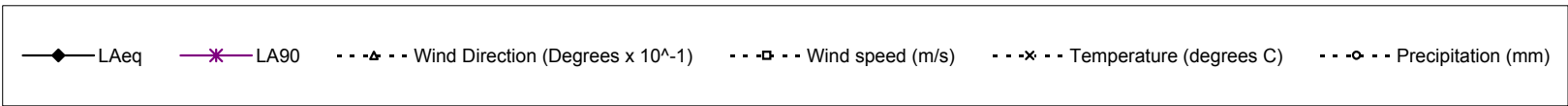
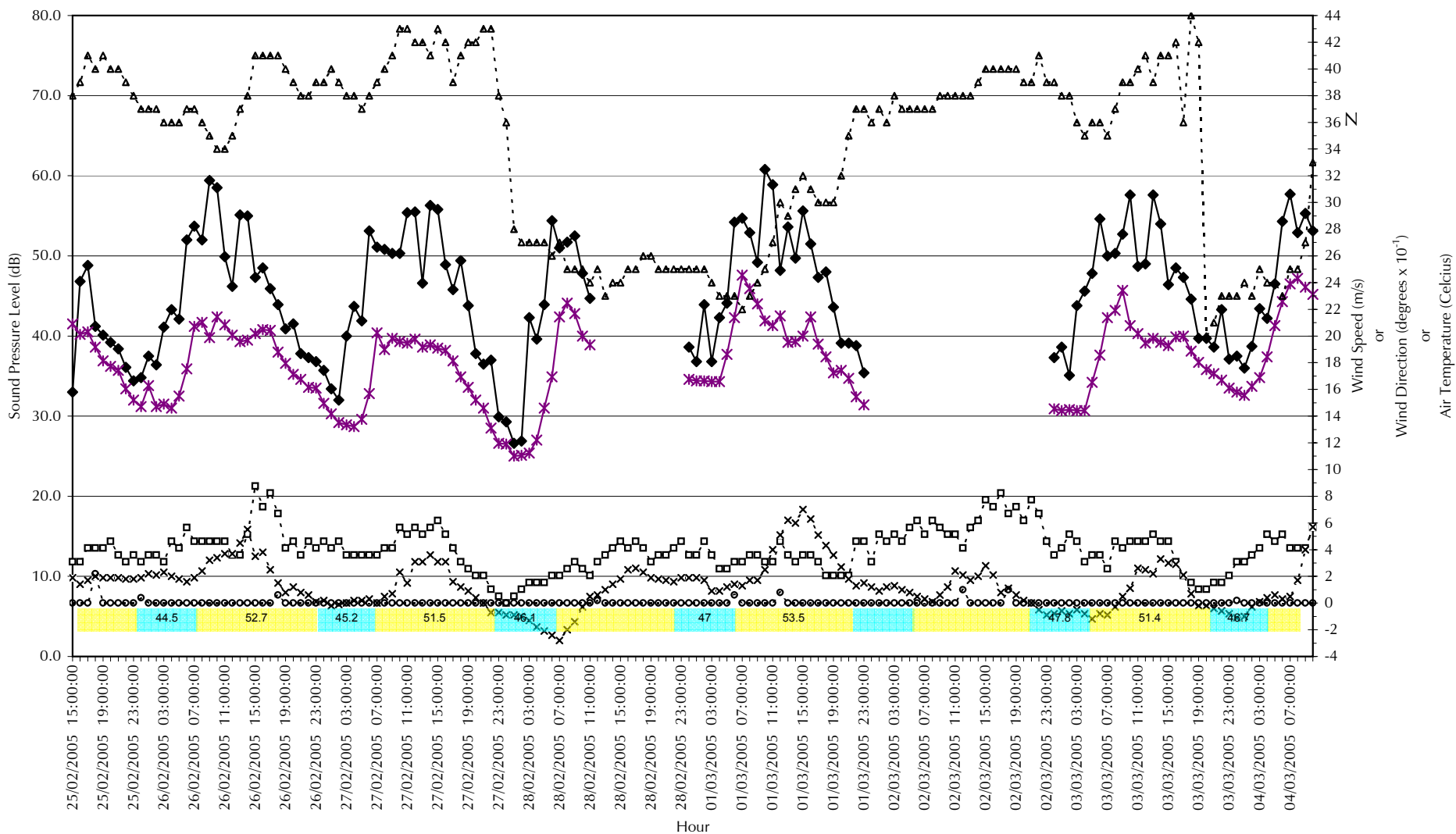


Figure 2005/2470/F06, Nottingham East Midlands Airport

Ambient Noise Levels at Monitoring Site 06 (Sutton Bonington), 4 - 11 April 2005

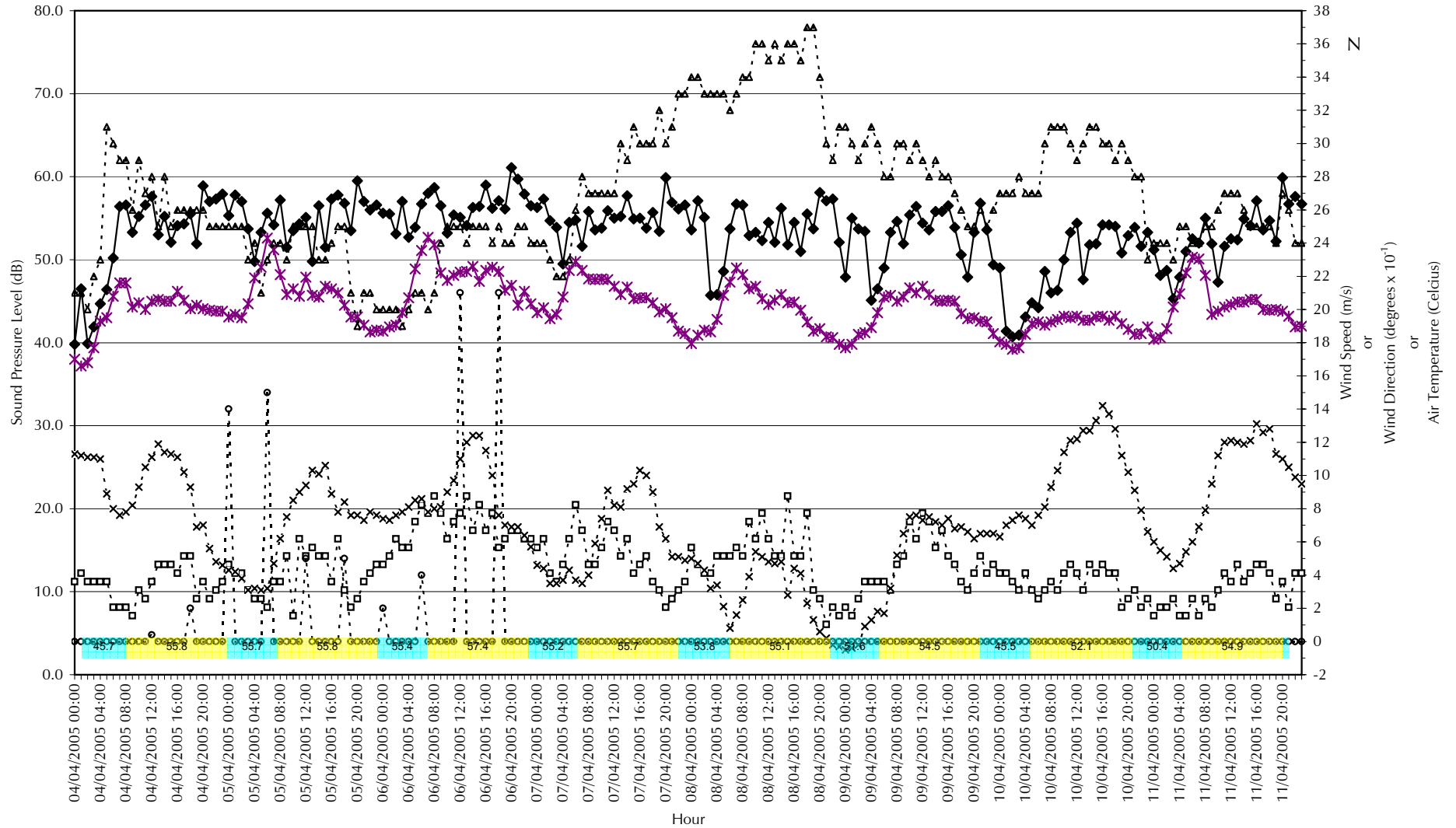


Figure 2005/2470/F07, Nottingham East Midlands Airport

Ambient Noise Levels at Monitoring Site 07 (Old Dalby), 19-25 January 2005

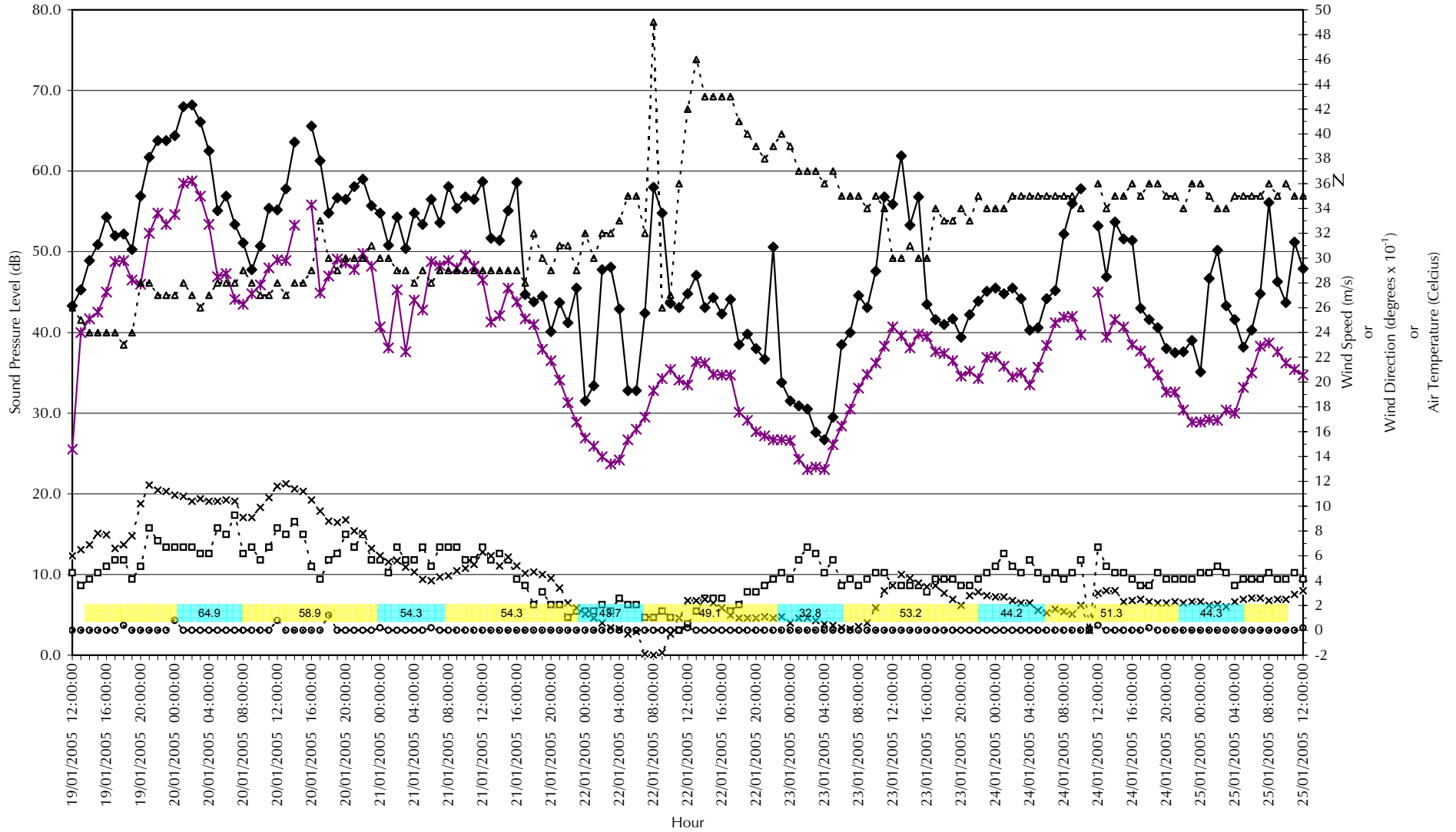


Figure 2005/2470/F08, Nottingham East Midlands Airport

Ambient Noise Levels at Monitoring Site 08 (Desford), 6-14 January 2005

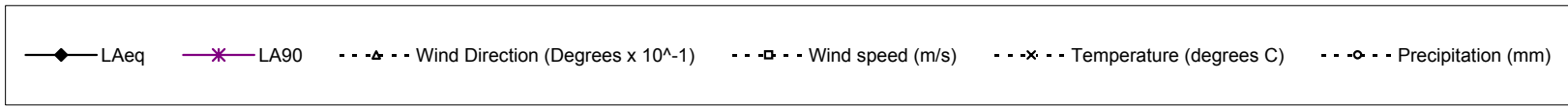
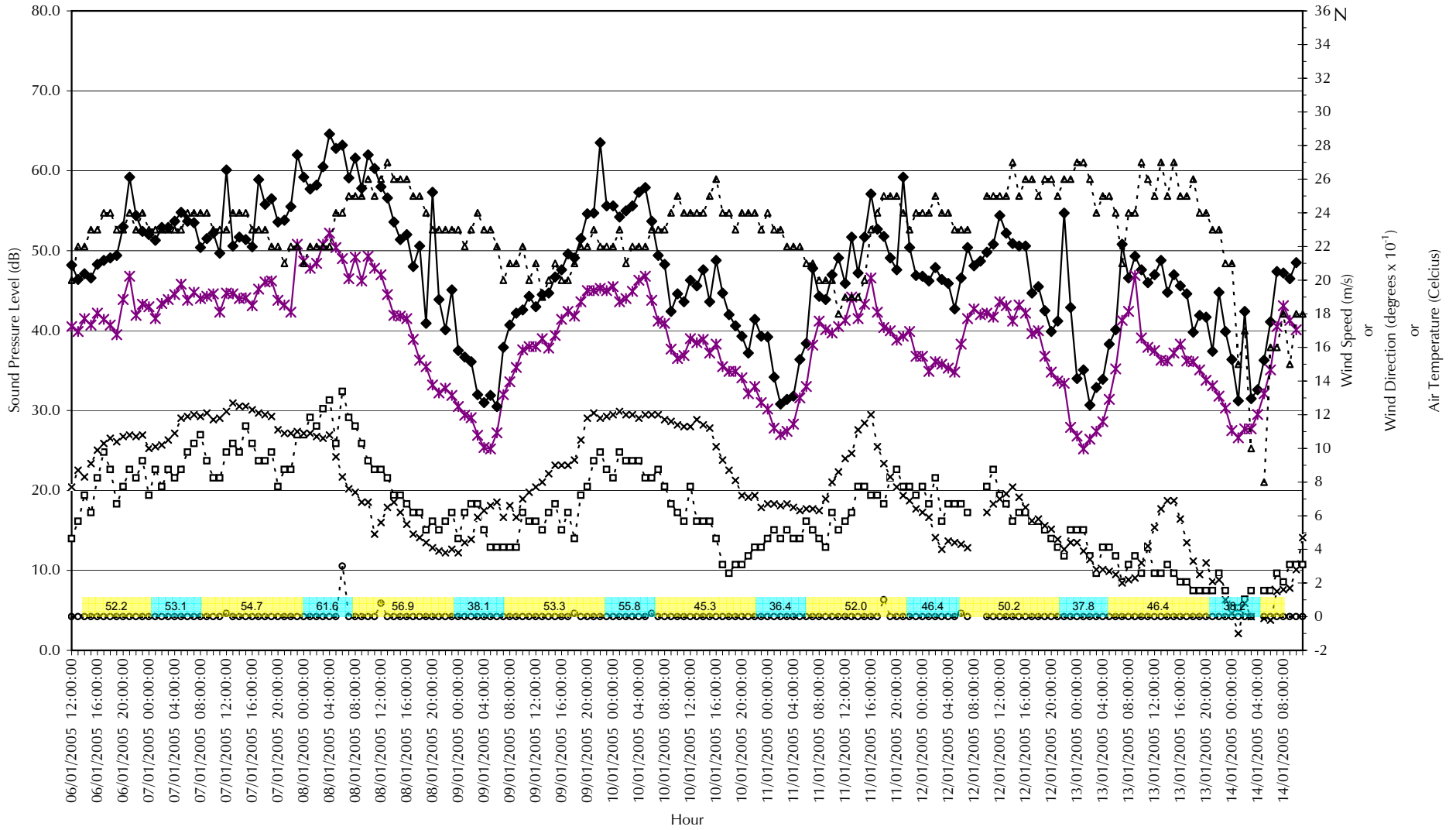


Figure 2005/2470/F09, Nottingham East Midlands Airport

Ambient Noise Levels at Monitoring Site 09 (Ashby-de-la-Zouch), 4-11 March 2005

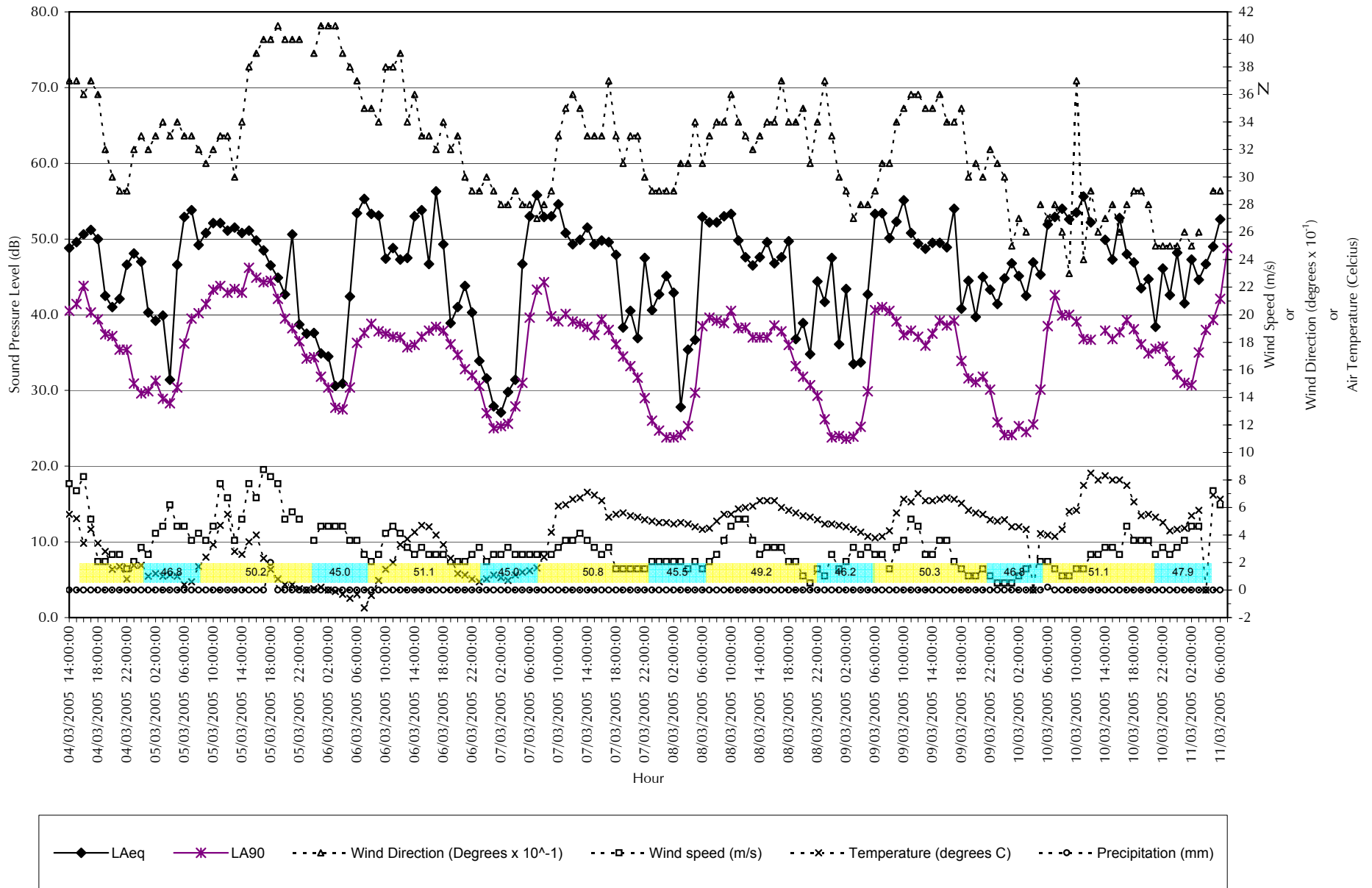


Figure 2005/2470/F10, Nottingham East Midlands Airport

Ambient Noise Levels at Monitoring Site 10 (Kegworth), 31 March - 7 April 2005

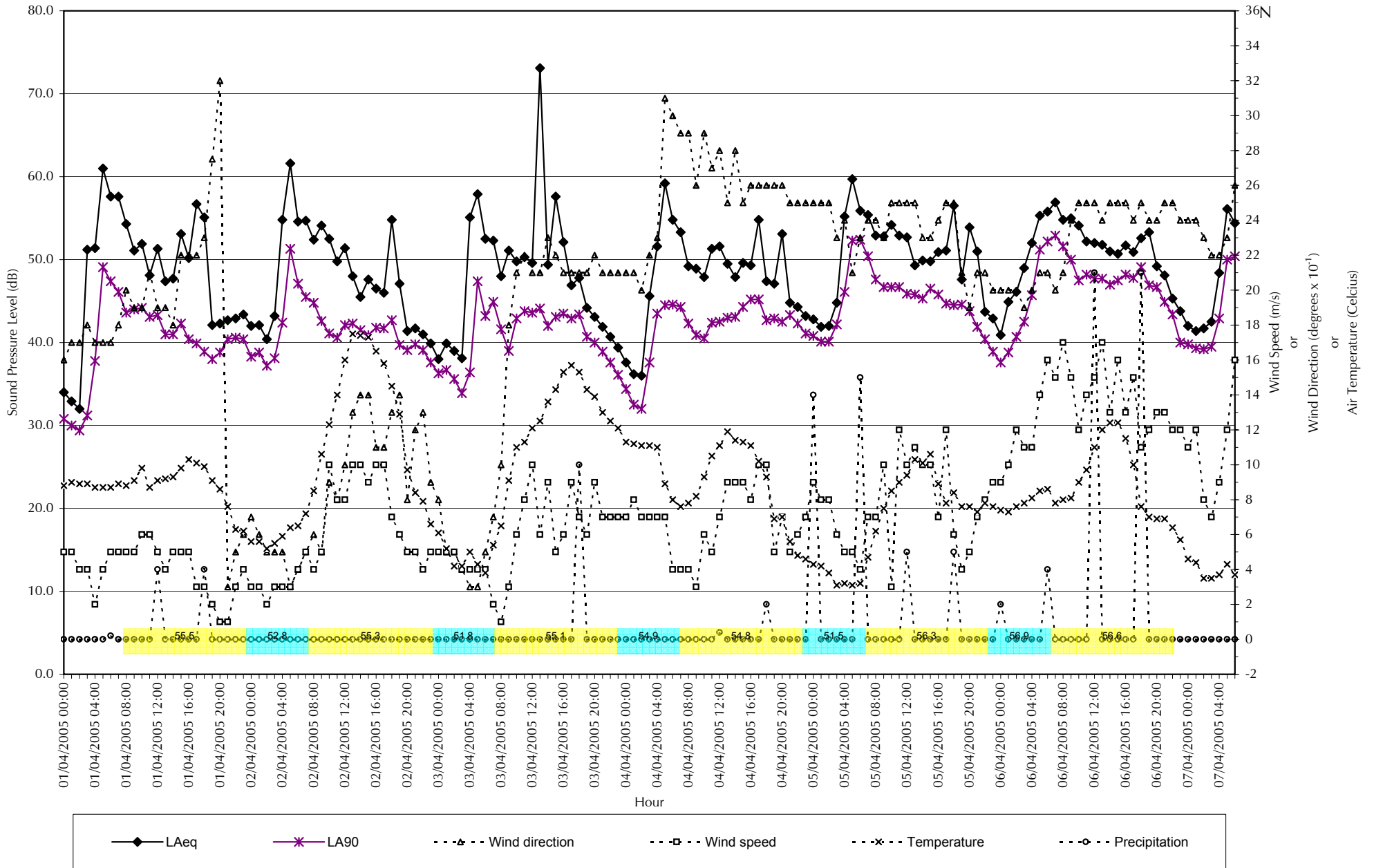


Figure 2005/2470/F11, Nottingham East Midlands Airport

Ambient Noise Levels at Monitoring Site 11 (Barsby), 28 January - 3 February 2005

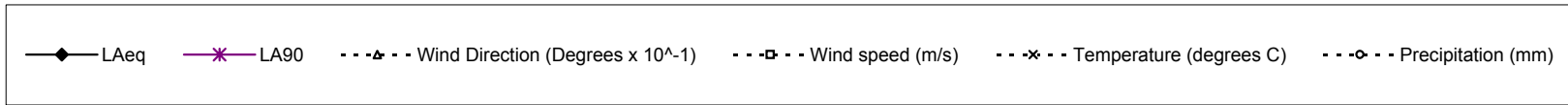
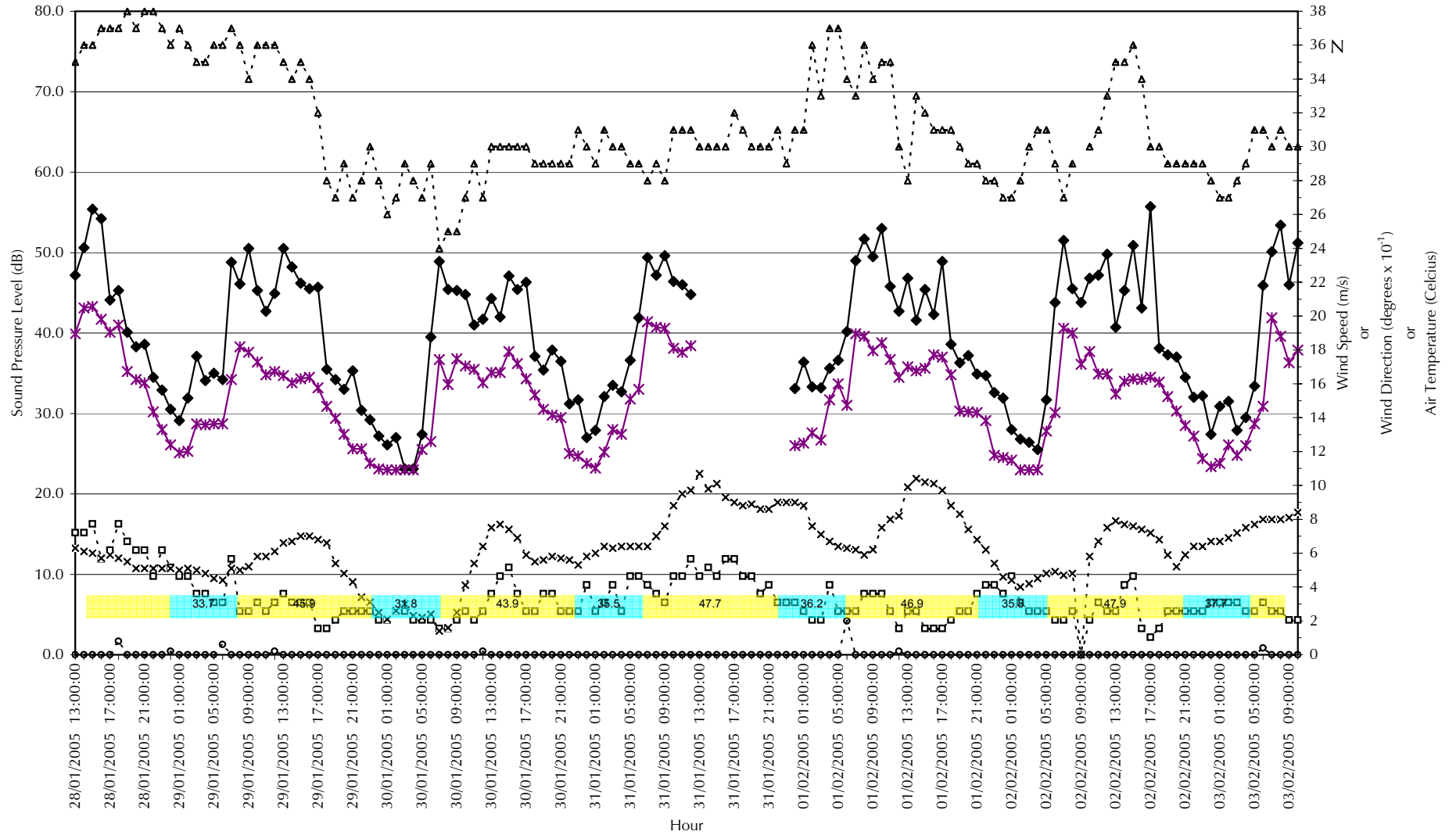


Figure 2005/2470/F13, Nottingham East Midlands Airport

Ambient Noise Levels at Monitoring Site 13 (Tollerton), 28 January - 3 February 2005

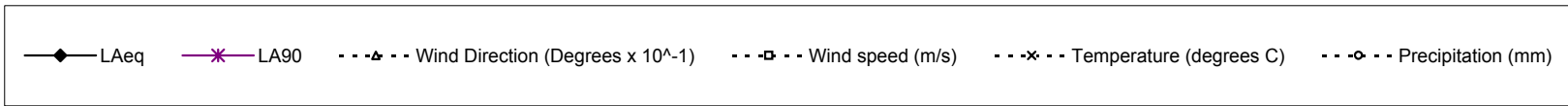
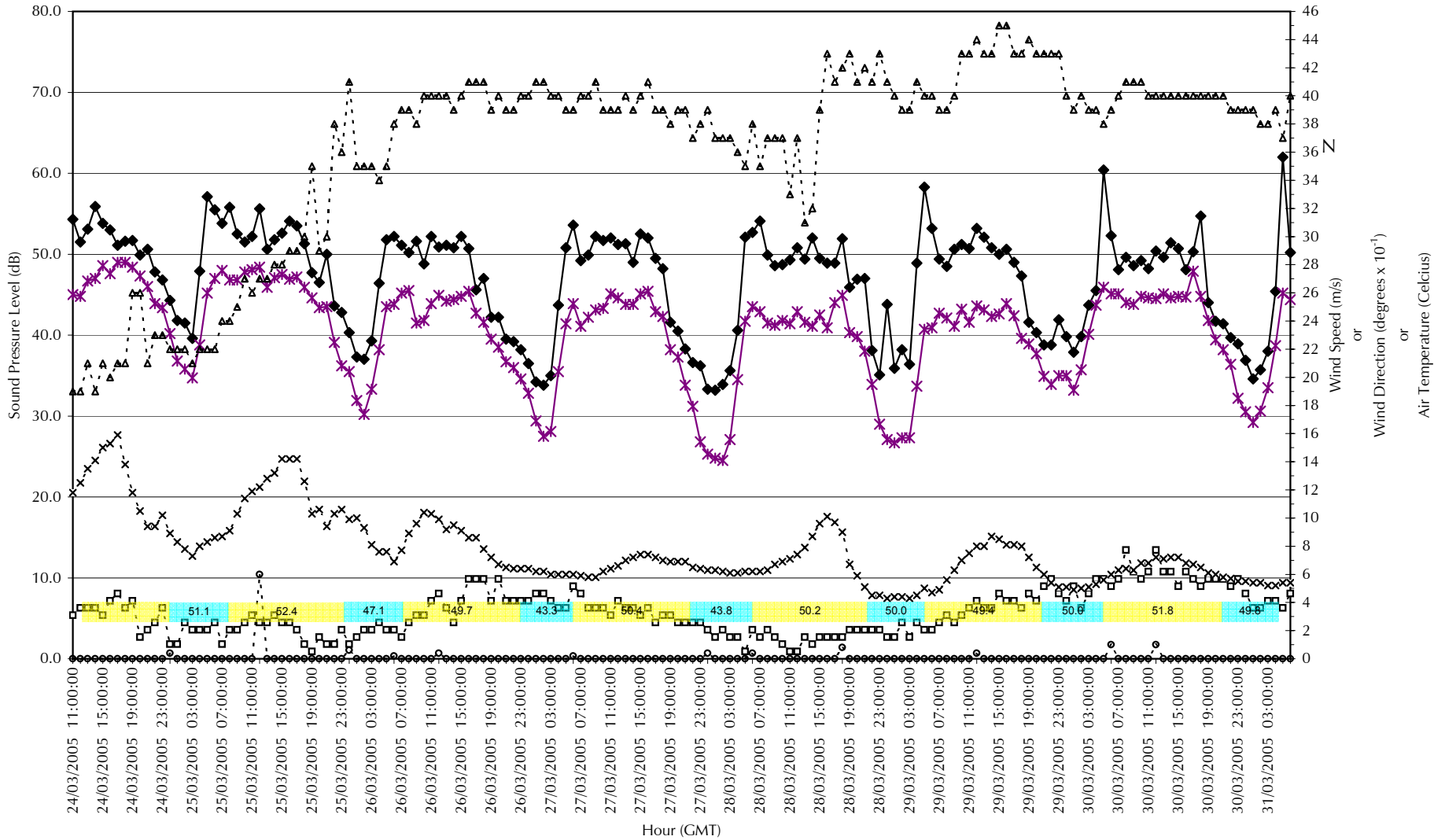


Figure 2005/2470/F14, Nottingham East Midlands Airport

Ambient Noise Levels at Monitoring Site 14 (Bunny), 18-21 March 2005

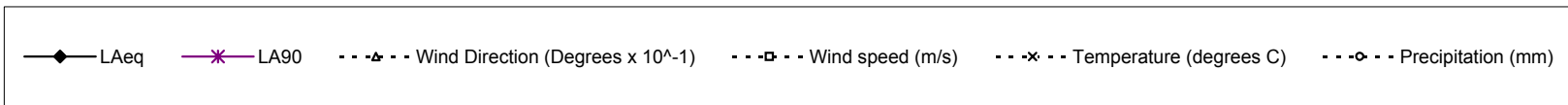
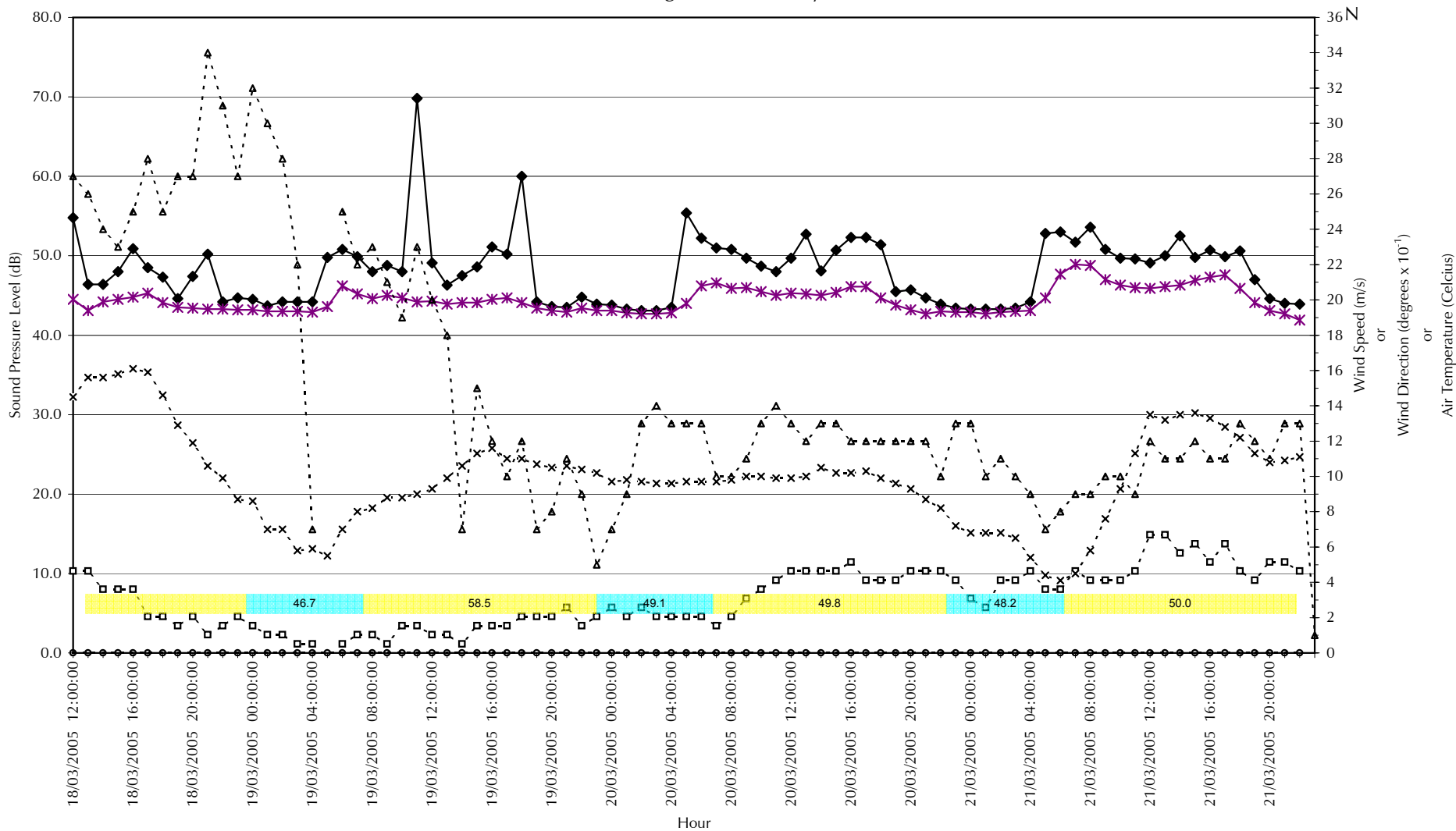


Figure 2005/2470/F15, Nottingham East Midlands Airport

Ambient Noise Levels at Monitoring Site 15 (Bramcote), 1-7 April 2005

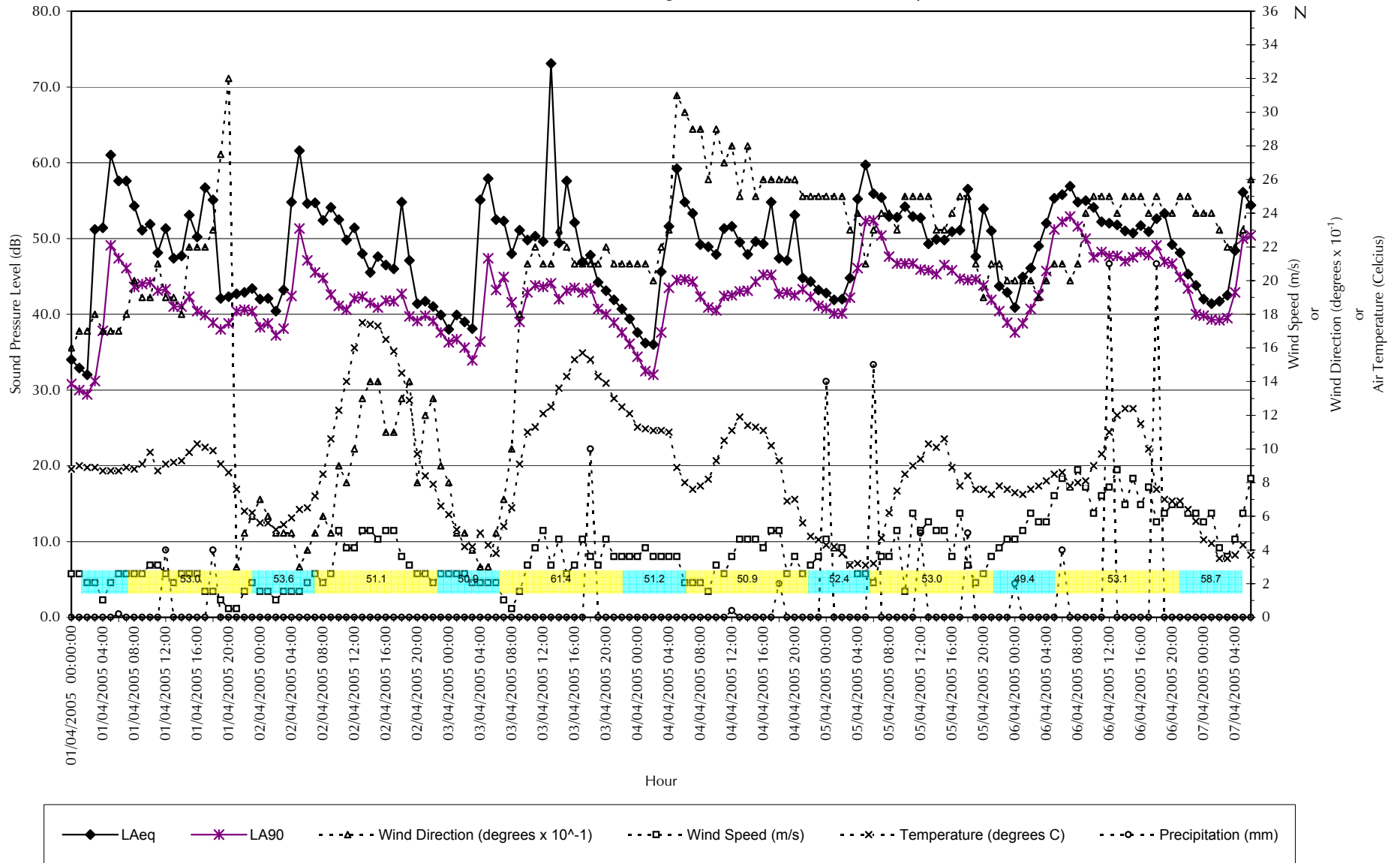


Figure 2005/2470/F17, Nottingham East Midlands Airport

Ambient Noise Levels at Monitoring Site 17 (Dale Abbey), 20-27 April 2005

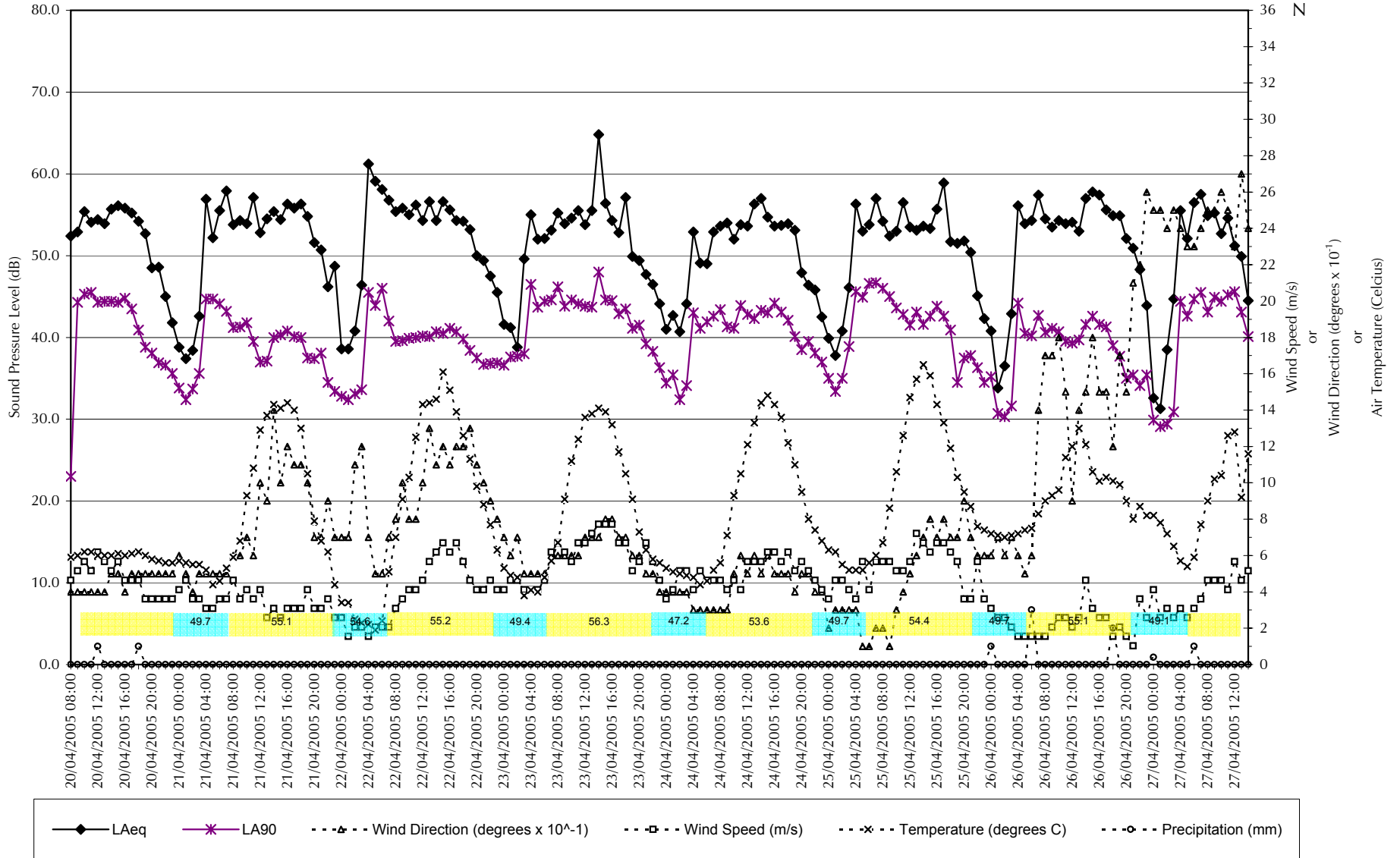


Figure 2005/2470/F18, Nottingham East Midlands Airport

Ambient Noise Levels at Monitoring Site 18 (Spondon), 28 April - 3 May 2005

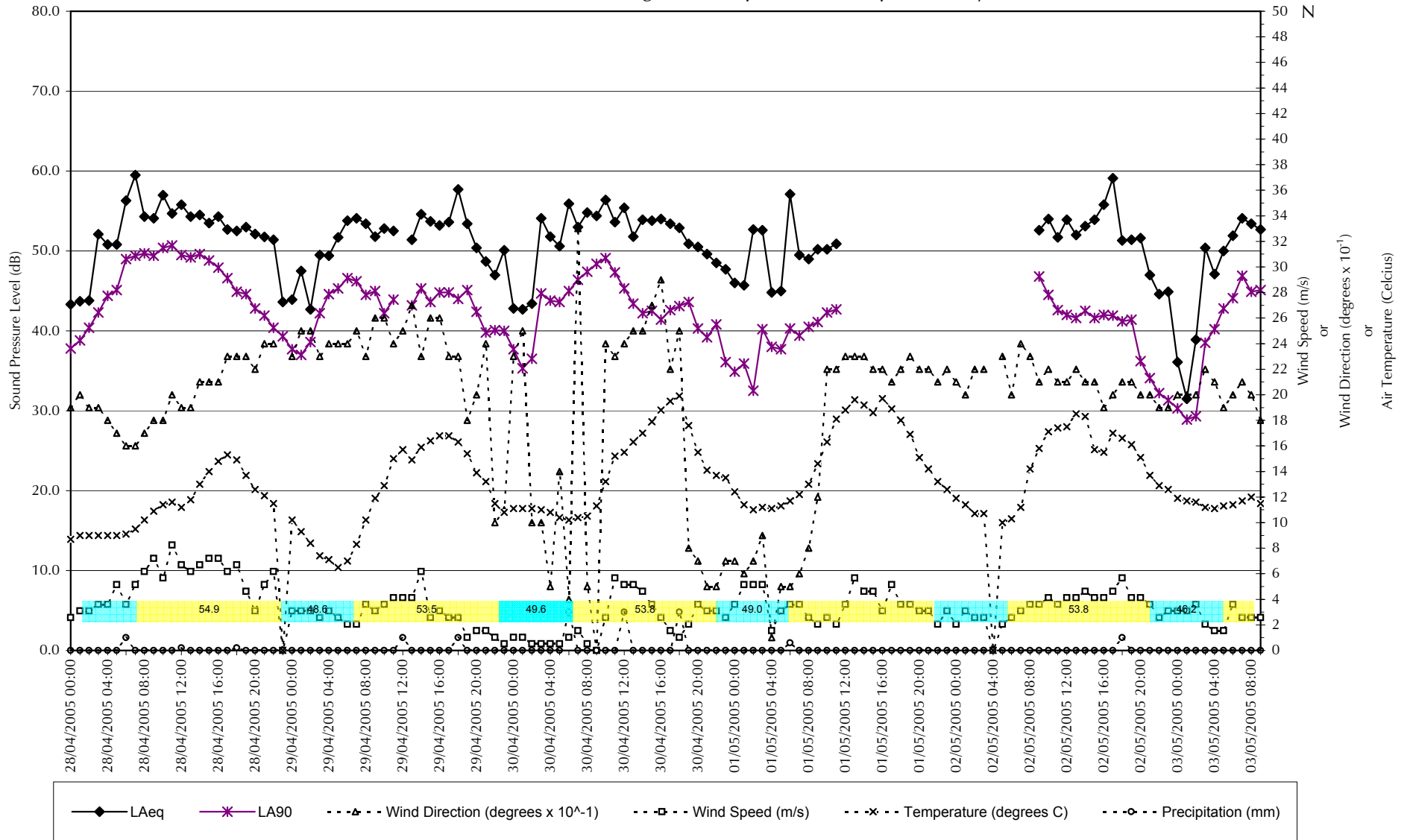


Figure 2005/2470/BRE1, Nottingham East Midlands Airport

Measured Noise Levels in Context of National Noise Incidence Study (2000) Cumulative Distributon for 16 hr LAeq (0700-2300)

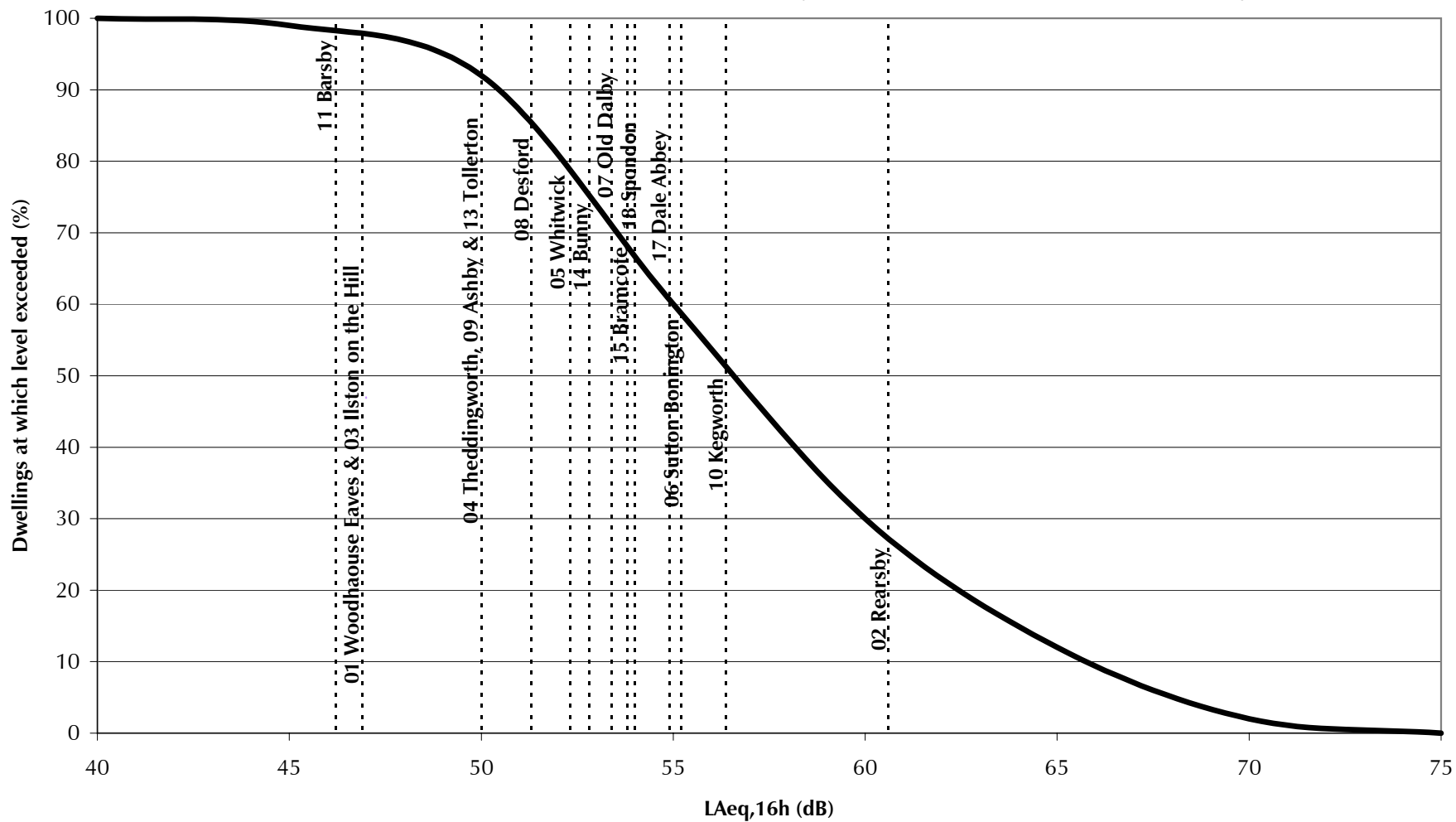


Figure 2005/2470/BRE2, Nottingham East Midlands Airport

Measured Noise Levels in Context of National Noise Incidence Study (2000) Cumulative Distributon for 8 hr LAeq (2300-0700)

