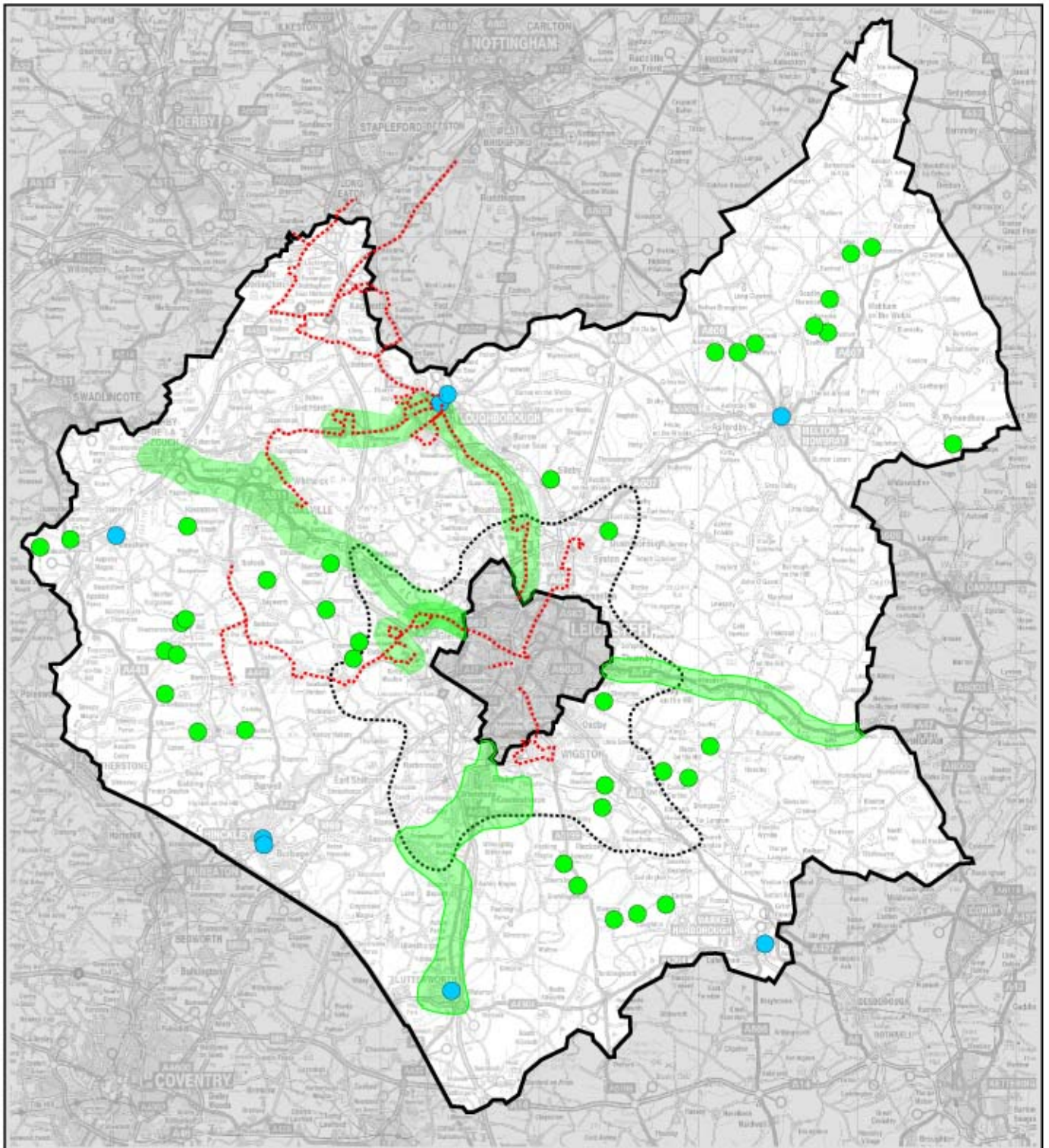








# Plan 7 Public transport improvements during LTP1



## Key

-  Leicester City Council boundary
-  Central Leicestershire boundary
-  Star trak routes implemented during LTP1
-  Villages benefiting from demand responsive transport during LTP1
-  Public transport interchanges improved during LTP1
-  Bus corridors improved during LTP1



© Crown copyright. All rights reserved.  
Leicestershire County Council.  
LA100019271 Published 2006

Not to scale